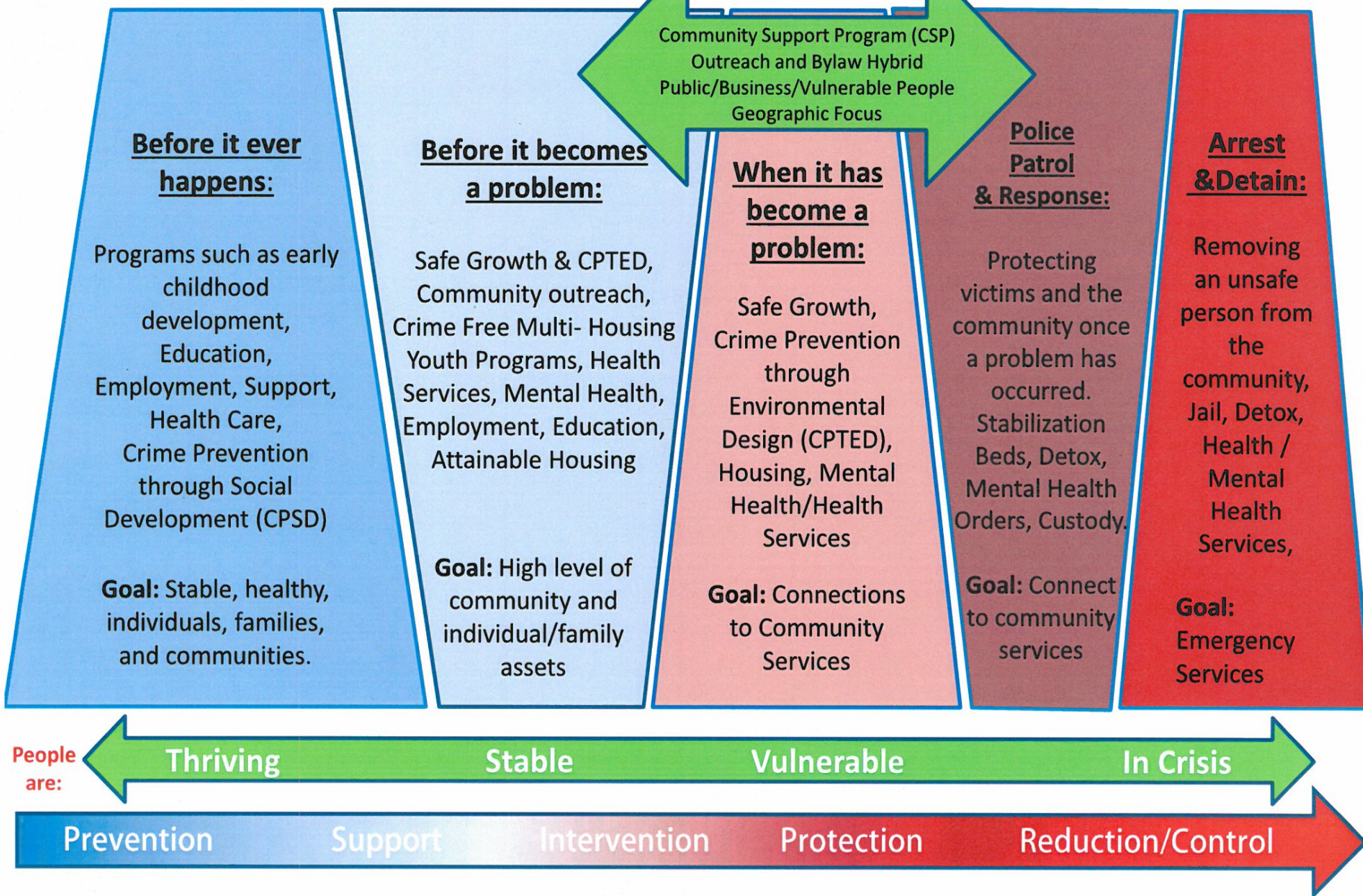


# Crime Prevention and Reduction Continuum



The Community Support Program (CSP) is a hybrid that blends community outreach and bylaw enforcement. The program's mission is to provide a safe and enjoyable street experience for everyone in the community. It is a total approach to community safety and health. The identifiable uniformed foot patrols reassure community members and businesses, and coordinates with community support organizations and the Saskatoon Police Service (Police Service).

Patrolling and checking with businesses and vulnerable people helps to identify issues early and halts some behaviour on sight. Attending to someone intoxicated or in distress helps other area users feel like the situation is under control. Their very presence contributes to residents' feelings of safety.

The CSP also has the potential to reduce interactions and costs to the Police Service, Health Region, service providers, and the justice system. They may also have an impact on the severity of the call. For example, helping an intoxicated person to their home or to a shelter in the winter may circumvent an ambulance call, a hospital stay, and potentially, a death.

Crime prevention is a broad and overlapping subject and the graphic above shows how the CSP fits into the crime prevention and reduction continuum in Saskatoon. This continuum identifies the general description and provides examples of programs, a goal, and how people fit into the continuum depending on the change in their circumstances. The CSP is situated in the centre and overlaps a number of steps on the continuum.