

Saskatoon's Small Swale

Content contributed by CHET NEUFELD, B.Sc., P. Ag,
Executive Director, Native Plant Society of Saskatchewan



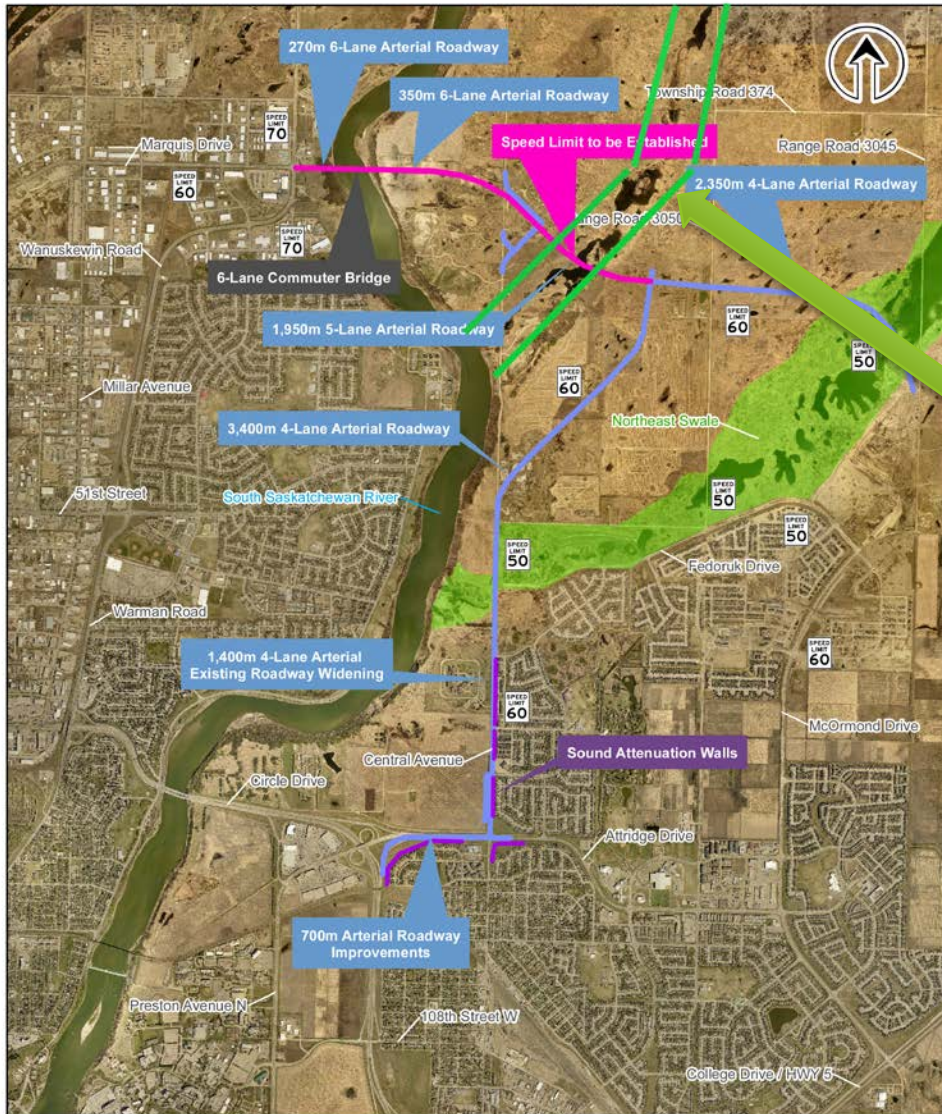
Saskatoon's Small Swale

Encompasses roughly 2.5 sections.

Connected with its more well-known neighbour the Northeast Swale as well as the South Sask River.

Directly south of Opimihaw Creek at Wanuskewin (linkages for birds).

Small Swale



W:\Office\Corporate Projects\6005-58 North Commuter Bridge\09 - Surveys and Designs\figs\map_20151207.pdf
2015-12-07 By: dwillems

December 2015
6050-104-44

Subjected to same threats as Northeast Swale, but with no protection measures and minimal studies conducted.

Threats include bridge/roads, vehicle and foot traffic, snow dump, urban development, invasive species, pollution.





Opportunities

- ▶ Small Swale filters water, reduces overland runoff and provides flood mitigation.
- ▶ Wetlands and grasslands of the Small Swale provide effective carbon storage to help achieve the city's climate change goals.
- ▶ Saskatchewan has lost more than 80% of its grasslands. Conserving the Small Swale will contribute to preserving our prairie heritage as well as provincial and national objectives.
- ▶ Fescue prairie, once common but now nearly gone in Saskatchewan, is found in the Small Swale.

Irreplaceable natural features include:

- ▶ Connectivity to other natural areas (facilitates wildlife movement and genetic exchange).
- ▶ Place for Saskatoon residents to connect with nature!



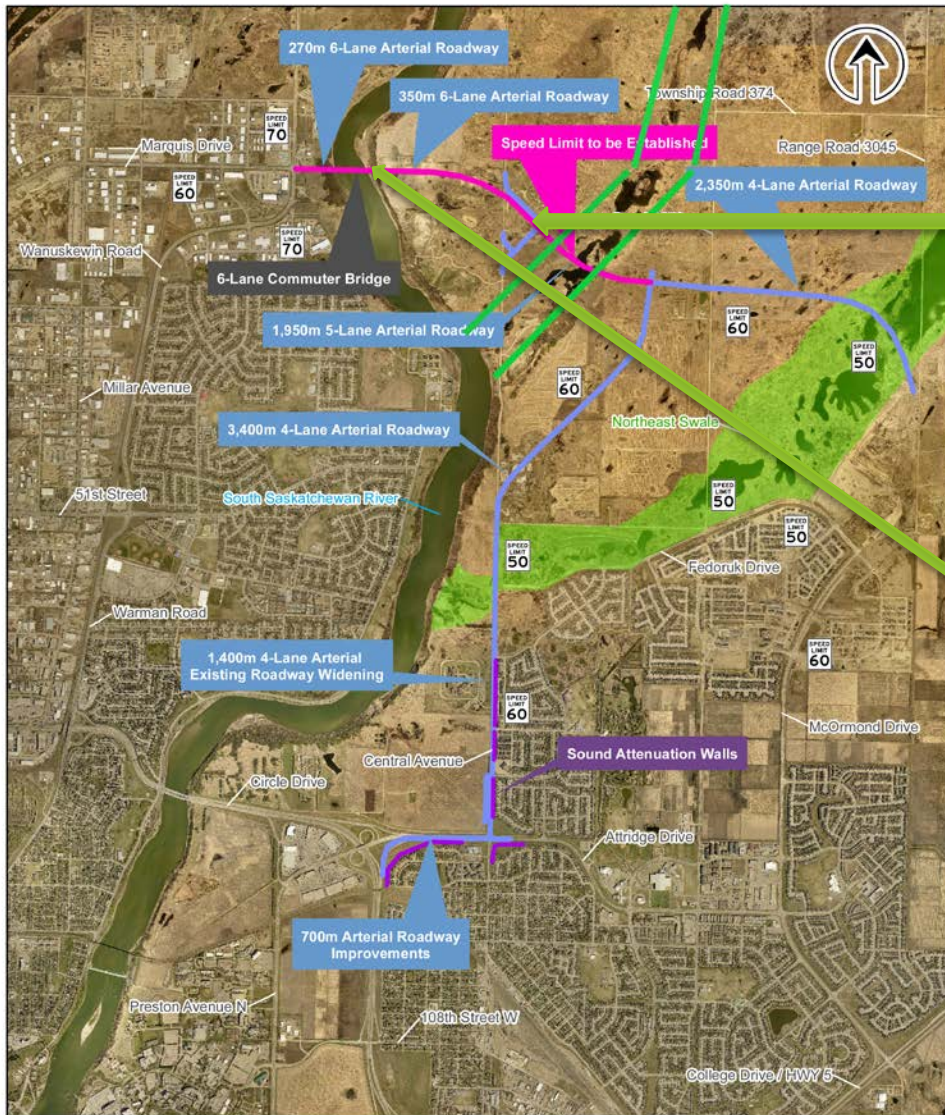
Recommendations

- ▶ Conduct comprehensive biological assessments of the Small Swale including wildlife movement and incorporate information into planning.
- ▶ Accurately delineate the Small Swale.
- ▶ Place formal protections on the Small Swale with an adequate buffer from urban development.
- ▶ Maintain connectivity of the Small Swale, Northeast Swale and the South Saskatchewan River, and avoid bottlenecks between these areas.
- ▶ Maintain biological diversity, structure and function.
- ▶ Minimize light pollution, implement/maintain dark sky compliant lighting.

Recommendations

- ▶ Place administration/management of the Small Swale with the MVA.
- ▶ Avoid building new roads, **minimize speed** and noise on existing roads with reduced speed limits and enforcement tools such as adequate signage and cameras.
- ▶ Relocate existing snow dump and reclaim this and other disturbed areas.
- ▶ Develop a long-term management plan for the Small Swale.
- ▶ Allow sufficient time and budget to accomplish these recommendations.
- ▶ Work with the Northeast Swale Watchers and other stakeholder groups to develop and implement these recommendations.

Small Swale



W:\Office\Corporate Projects\6005-58 North Commuter Bridge\09 - Surveys and Designs\figs\map_20151207.pdf
2015-12-07 By: dwillems

December 2015
6050-104-44



Project:
NORTH COMMUTER PARKWAY
Figure No.:
1
Title/Subject:
Project Overview

Swale Crossing
and approach to traffic lights
at Central Avenue
60 kmh

Bridge Crossing 70 kmh