

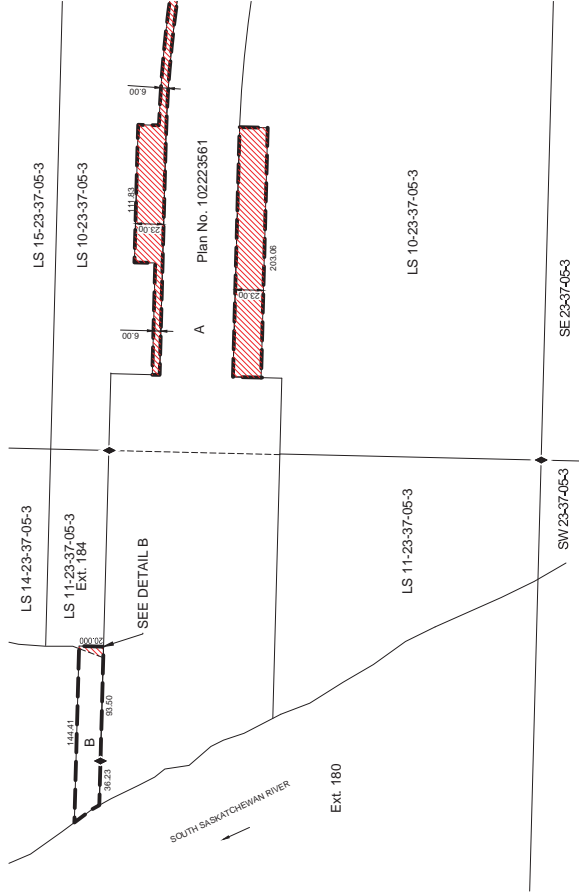
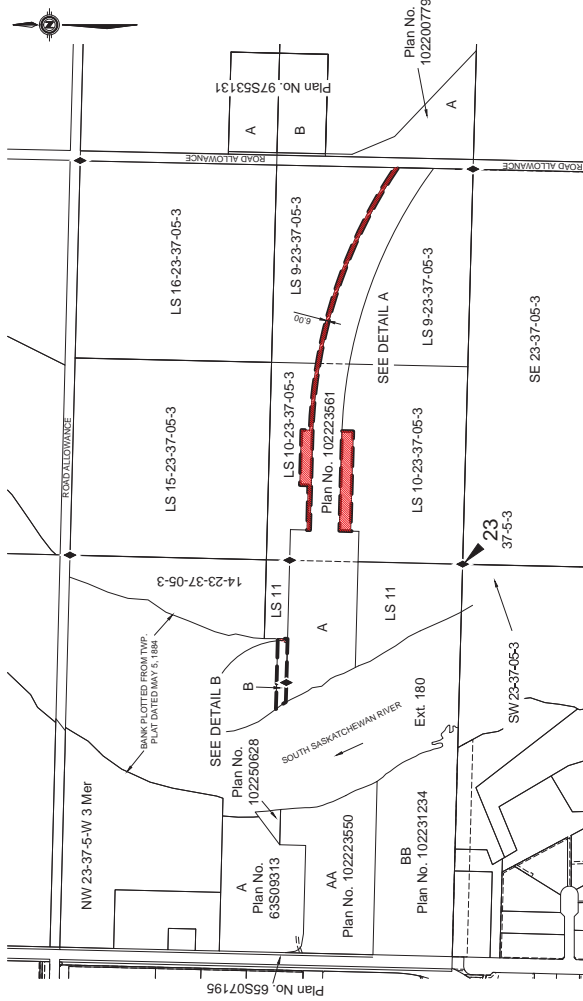
**PROPOSED PLAN OF SURVEY  
SHOWING  
SURFACE SUBDIVISION  
OF PART OF  
SOUTH SASKATCHEWAN RIVER IN NW 1/4 SEC 23  
AND  
LS 9, 10 & 11, SEC 23, TWP 37, RGE 5 W 3 MER  
IN THE  
CITY OF SASKATOON  
SASKATCHEWAN  
BY A. JAMIES HUMIE, S.L.S.**

SCALE = 1:5000  
0 50 100 200m

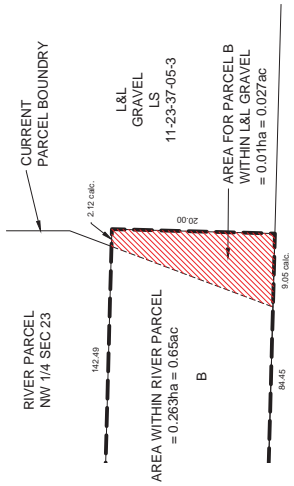
**LEGEND:**

- THIS BANK IS TAKEN AS THE BOUNDARY FOR DEFINITION OF BANK SEE SECTION 32 OF THE LAND SURVEYS REGULATIONS, 2000
- MEASUREMENTS ARE IN METRES AND DECIMALS THEREOF.
- AREA TO BE APPROVED IS OUTLINED WITH A HEAVY DASHED LINE.
- STANDARD IRON PESTS FOUND ARE SHOWN THUS

NORTH OF PLAN 102223561 0.66 ha = 1.63 ACRES  
SOUTH OF PLAN 102223561 0.47 ha = 1.16 ACRES  
PARCEL B 0.01 ha = 0.027 ACRES  
TOTAL L&L GRAVEL 1.14 ha = 2.82 ACRES



DETAIL A  
0 20 1:2000 100m



PARCEL A  
PLAN No. 102223561

DETAIL B (not to scale)