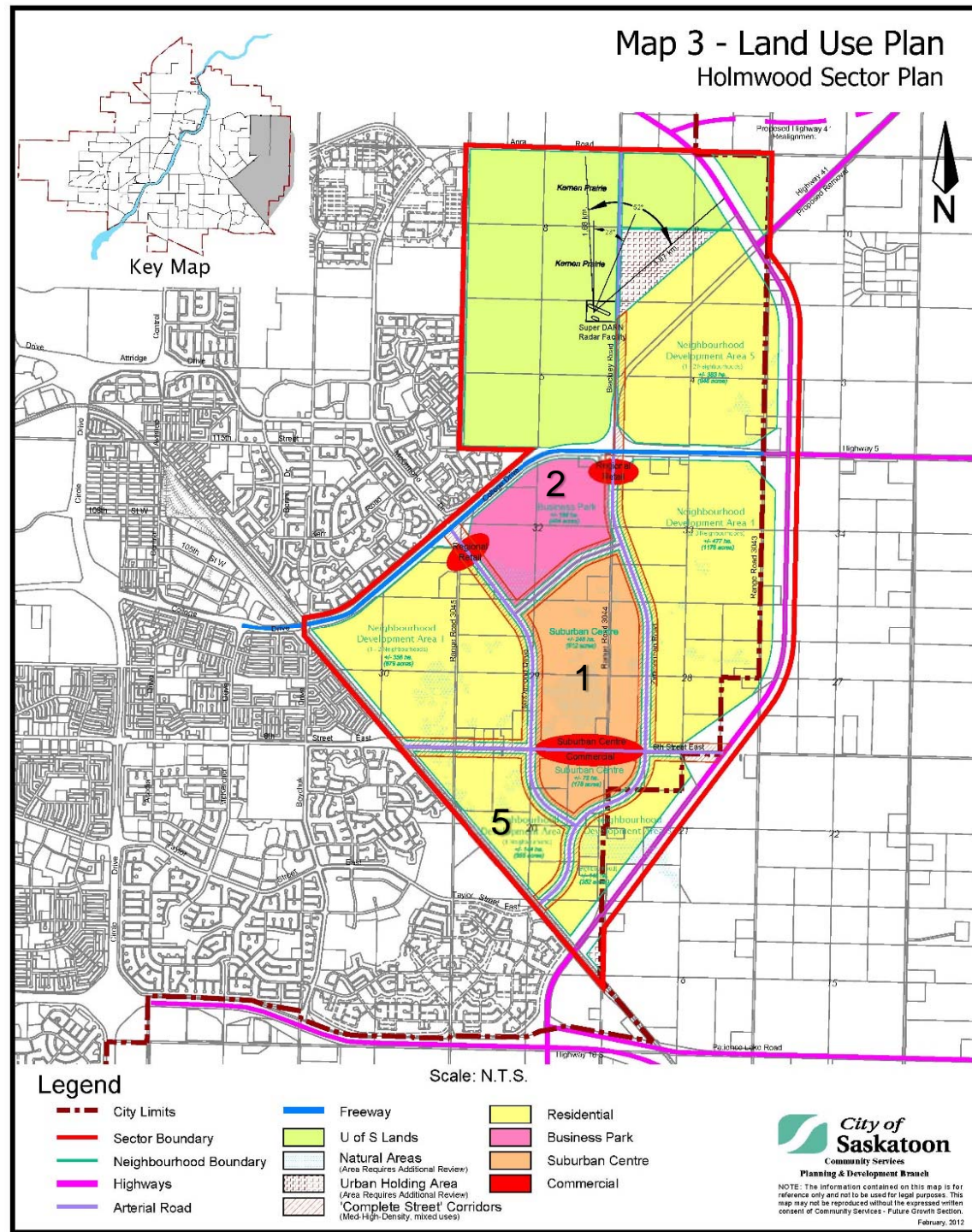


Former

Proposed



In the approved Holmwood Sector Plan the land uses within the Suburban Centre and Business Park areas were not well defined. The following amendments refine these areas to better reflect the intent of the area and ensure the area achieves the vision laid out in the approved Holmwood Sector Plan.

1. Suburban Centre
  - a. Reduced from 245.9ha (607.6ac) to 132.4ha (327.2ac).
2. Business Park
  - a. Reduced from 167.4ha (413.7ac) to 112ha (276.8ac).
3. Additional Neighbourhood Development Area consisting of 170.0ac (420.1ac).
4. District Village
  - a. New 81ha (200.2ac) District Village area.
  - b. 11ha of District Commercial integrated with medium and high density residential uses.
  - c. Located adjacent to College Drive east of Zimmerman Road.
5. Neighbourhood Reconfiguration
  - a. Neighbourhoods south of 8<sup>th</sup> Street East
    - i. Neighbourhood 3 (formerly Neighbourhood 2) reconfigured and size increased from 144ha (355ac) to 276ha (682ac).

