

Eastview Neighborhood Waste Collections Operational Assessment

The following is an assessment to evaluate front street and back lane collection locations in the Eastview neighborhood. The matrix evaluates a number of criteria that may impact the safe operations of waste collection. A few major impacts were noted during the assessment for consideration with the proposed front street transition such as traffic conditions (i.e. school zones, busy arterials, transit). Photos from site evaluations completed by the Environmental Operations Manager, Senior Project Management Engineer and Environmental Protection Officer, are also included below.

Impact	Descriptor	Back lane	Front street
Permanent Obstructions	Trees, property, overhead cable lines/wires	Obstructions observed (trees, posts), no overhead lines/wire. Low hazards.	Some on-street hazards. Low hazards.
Backing Up	Areas where the collection truck would need to back up	Backing up required. Low risk.	Not required.
Road Conditions	Condition of roads, paved versus gravel	Older gravel surfaces.	Up to current standard (paved).
Width of Road	Narrow width	5m or more width.	Greater width.
Parking	Amount of parking locations	Some detached garages, access in the back.	Some on street parking. Parking in garages, driveways.
Slope (incline) of Road	Visible slopes or shoulders	Visible slopes exist.	No visible slopes.
Vehicle Traffic	Vehicle traffic in lane, local or minor, arterial road	Lane collector from parking in lanes.	Minor arterial collector, residential traffic.
Snow & Ice	Suitable for collection in the winter	Potential drifting in areas around parks. Not consistently plowed.	Low potential for drifting, windrows noted on the shoulder from snow clearing.
Driver Visibility	Access to and from the road	Lower visibility. No street lighting.	Good visibility.

Impact	Descriptor	Location
School Zone	If proposed front street collection is in a school zone	John Dolan School and Pope John Paul II School (3000 to 3200 block Arlington Ave, 2700 to 2800 block Preston Ave S)
Arterial Roads	If the proposed front street collection is on an arterial collector	Preston Ave S
Transit Conditions	If the proposed front street collection on a bus rapid transit route	Preston Ave S

Efficiency

Reviewing GPS and set-out data for garbage routes, there is a decrease in the average time per stop of back lane neighbourhoods. This decrease in collection time represents on average 10-15% in back lane neighbourhoods. It is noted that the average pickup speed is impacted by several conditions including, but not limited to, set-out rates, weather, road conditions, and operator experience.

Safety Issues

The Occupational Health and Safety Advisor reviewed the City's safety incident software (Sodales) and found three safety incidents in Eastview neighbourhood in the last few years. The first incident occurred when a collection vehicle's tire became stuck near an area that had recently been hydro-excavated. The two remaining incidents involved collisions with a collection vehicle and an overhead tree branch.

Bylaw Notices

The Environmental Protection Officers (EPO's) enforce the Waste Bylaw (Bylaw 9844 - The Waste Bylaw, 2022) and encourage compliance through responding to issues or concerns reported through customer service and the Water & Waste Operations Department. Forty-seven bylaw issues were recorded in Eastview from 2022-2024 including Cart Left Out (14), Improperly Placed Waste (8), Unauthorized Use of Container (8), Tree Encroachment (8), Illegal Dumping (5), Miscellaneous (2), Spill Response (1), Unacceptable Waste (1).

The Waste Bylaw includes provisions for the placement and storage. As outlined in, Section 13 waste containers must be returned to private property by 7:00 p.m. on collection day and cannot remain on the public-right-way. EPO's complete education and enforcement initiatives and will review neighbourhoods for carts that are left out. The process involves sending block-wide education letters to areas where many carts were left outside their scheduled collection window. The education letters are followed up with a re-inspection of the identified locations. Warning letters are issued to any properties that continue to leave carts out. A final re-inspection is completed and if required a notice of violation issued. An enforcement blitz of the Eastview neighbourhood was completed in the Spring of 2017 with the information from the activity included below.

Neighbourhood	Education Notices Delivered	Warning Notices Delivered	Notices of Violation Issued
Eastview (2017)	409 (26%)	121 (15%)	12 (6%)

Photo Log: Eastview Neighbourhood

Photo 1: Green Cart Collection



Photo 2: Black Cart Collection



Photo 4: Black Cart Collection



Photo 3: Front Street



Photo 3: Carts Left Out

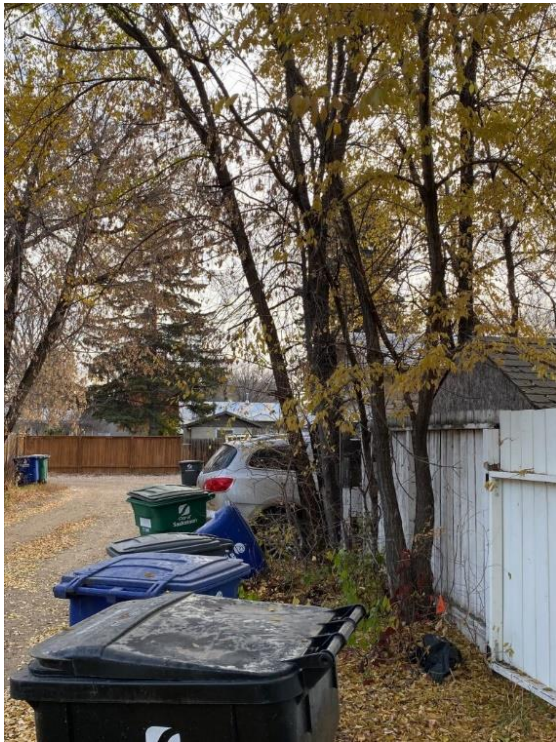


Photo 5: Carts Left Out

