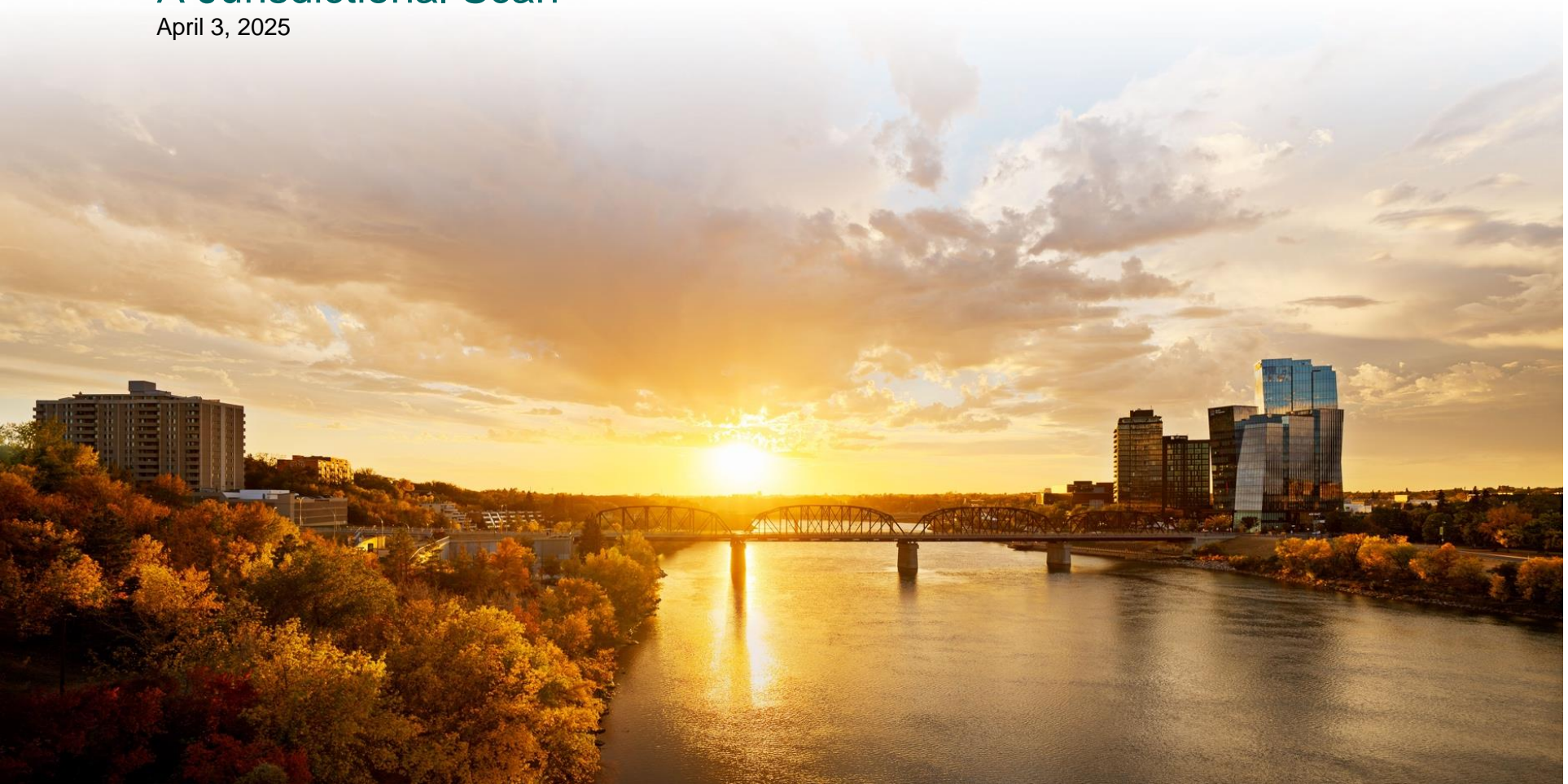




Road Prioritization Criteria of Canadian Cities

A Jurisdictional Scan

April 3, 2025



Contents

City Demographics3

Priority 1 Roads.....4

Priority 2 Roads.....5

Priority 3 Roads.....6

Priority 4 Roads.....7

Reference.....8

CITY DEMOGRAPHICS

City	Edmonton	Calgary	Regina	Saskatoon	Winnipeg	Ottawa	Toronto	Montreal	Brandon
Population (2021)	1,184,647	1,562,600	242,685	308,400	777,553	1,070,889	2,832,718	1,798,853	54,268
City Area (km²)	765.61	820.62	178.81	226.56	464.01	2778.10	630.20	364.74	77.41
Road km	4,600	5,600	1,100	1,200	7000	12,900	14,700	2,708	352
Sidewalk km	5,312	5,900	1,300	1,300	3,200	2,300	7,900	2,125	143
Cycling Infrastructure km	1,400	1,290	120	173	400	665	486	1,065	20
Backlane km	1,200	1,796	500	400	900	-	316	-	20
Density (people per km²)	1567.38	2047.38	1542.68	1227.91	1675.72	385.48	4494.95	4926.61	701.05

PRIORITY 1 ROADS

Priority 1		
City	Priority Definition	Completion timeline
Saskatoon	<ul style="list-style-type: none"> Driving lanes for all freeways, high traffic streets and emergency facilities access routes 	<ul style="list-style-type: none"> Graded within 12 hours
Calgary	<ul style="list-style-type: none"> Major roadways Roads with over 20,000 vehicle trips per day Downtown roads High use bus stops LRT platforms <i>Deerfoot and Stoney Trail are maintained by the province</i> 	<ul style="list-style-type: none"> Completed within 24 hours
Regina	<ul style="list-style-type: none"> Freeways/expressways Major arterials Roads on a designated hospital route 	<ul style="list-style-type: none"> Completed within 24 hours
Edmonton	<ul style="list-style-type: none"> Main freeways 	<ul style="list-style-type: none"> Will be completed within 24 hours
	<ul style="list-style-type: none"> Arterial roadways, downtown business district and hills 	<ul style="list-style-type: none"> Cleared to bare pavement standard within 5 days
Winnipeg	<ul style="list-style-type: none"> Major regional streets (major routes) and priority active transportation routes 4 Lanes Min ADT Volume of 4000 Divided ROW width of 100-400 feet Undivided ROW width of 66-100 feet Parking restricted 	<ul style="list-style-type: none"> Will be completed within 36 hours
Ottawa	<ul style="list-style-type: none"> Highest Priority Road Freeways Transitway Divided into secondary class A and B 	<ul style="list-style-type: none"> Snow will be cleared within 2 hours
Toronto	<ul style="list-style-type: none"> Expressways 	<ul style="list-style-type: none"> Will be passed every 2 hours till bare pavement/end of storm
Montreal	<ul style="list-style-type: none"> Major thoroughfares, access to health institutions and schools, priority bus routes and reserved lanes major shopping streets 	<ul style="list-style-type: none"> Not stated
Brandon	<ul style="list-style-type: none"> Main arterial streets 	<ul style="list-style-type: none"> Completed within 24 hours

PRIORITY 2 ROADS

Priority 2		
City	Priority Definition	Completion timeline
Saskatoon	<ul style="list-style-type: none"> Driving lanes for all medium use streets and bus rapid transit routes. 	<ul style="list-style-type: none"> These are cleared within 36 hours after a snowstorm
Calgary	<ul style="list-style-type: none"> Major community and transit routes. Roads with more than 5000 vehicles per day 5,000-19,999 vehicles per day Intersections and crosswalks controlled by traffic lights Designated emergency routes (e.g. around hospitals and fire stations) Bus routes Roads with on-street bike lanes 	<ul style="list-style-type: none"> Completed within 48 hours
Regina	<ul style="list-style-type: none"> Minor arterial roads, major collector roads with traffic volumes Greater than 5,000 vehicles per day (VPD) Transit routes All roads in downtown All bicycles only lanes (bicycles only lanes) 	<ul style="list-style-type: none"> Completed within 36 hours
Edmonton	<ul style="list-style-type: none"> Remaining freeways, arterial roadways, business districts, collector roadways, Transit Park and Ride access roads. 	<ul style="list-style-type: none"> Completed within 5 days
Winnipeg	<ul style="list-style-type: none"> Non-regional bus routes and collector streets. Based on traffic count 2 Lanes Min ADT Volume of 800 ROW width of 66-80 feet Roadway width of 24-46 feet One sided parking 	<ul style="list-style-type: none"> Completed within 36 hours
Ottawa	<ul style="list-style-type: none"> Arterials Roads within special designated areas, or with essential services, schools, transit, steep grades, or with designated City cycling route, NCC parkways All other paved class 2 roads Divided into secondary class A and B 	<ul style="list-style-type: none"> Snow will be cleared within 3 hours
Toronto	<ul style="list-style-type: none"> Major roads, transit routes and streets with hills 	<ul style="list-style-type: none"> Completed within 6 hours till bare pavement till end of storm
Montreal	<ul style="list-style-type: none"> Collector streets, other bus routes, local shopping streets 	<ul style="list-style-type: none"> Not stated
Brandon	<ul style="list-style-type: none"> Primarily consist of arterial and collector streets, City bus routes and some selected residential streets. 	<ul style="list-style-type: none"> Cleared within 24-72 hours

PRIORITY 3 ROADS

Priority 3		
City	Priority Definition	Completion timeline
Saskatoon	<ul style="list-style-type: none"> Driving lanes for all remaining Business Improvement Districts, bus routes, school zones, and areas around City Hall and City Downtown Yards. 	<ul style="list-style-type: none"> These are completed within 72 hours after a snowstorm
Calgary	<ul style="list-style-type: none"> Feeder/collector bus routes 	<ul style="list-style-type: none"> Completed within 4 days of priority 2
Regina	<ul style="list-style-type: none"> Major collector roads with traffic volumes less than 5,000 VPD Minor collector roads Industrial/commercial roads Residential/local roads with traffic volume greater than 1,500 VPD roads adjacent to school drop-off zones 	<ul style="list-style-type: none"> Completed within 60 hours
Edmonton	<ul style="list-style-type: none"> Industrial areas and rural roadways 	<ul style="list-style-type: none"> Completed within 6-14 days
Winnipeg	<ul style="list-style-type: none"> Residential streets and lanes 2 Lanes Min ADT Volume of less than 800 ROW width of 50-66 feet Roadway width of 14 feet One sided parking 	<ul style="list-style-type: none"> Not stated clearly
Ottawa	<ul style="list-style-type: none"> Major collectors Roads within special designated areas, or with essential services, schools, transit, steep grades, or with designated City cycling route All other paved class 3 roads Divided into secondary class A and B 	<ul style="list-style-type: none"> Cleared within 4 hours of the end of the snowstorm
Toronto	<ul style="list-style-type: none"> Residential streets 	<ul style="list-style-type: none"> Will be passed every 8 hours till road is center bare
Montreal	<ul style="list-style-type: none"> Local streets 	<ul style="list-style-type: none"> Not stated
Brandon	<ul style="list-style-type: none"> Remaining streets and roads 	<ul style="list-style-type: none"> Not stated

PRIORITY 4 ROADS

Priority 4	
Saskatoon	<ul style="list-style-type: none"> Residential roads
Calgary	<ul style="list-style-type: none"> Residential roads
Regina	<ul style="list-style-type: none"> All gravel roads All local/residential roads with traffic volume less than 1,500 VPD
Edmonton	<ul style="list-style-type: none"> Residential roads, alley and back lanes
Winnipeg	<ul style="list-style-type: none"> N/A
Ottawa	<ul style="list-style-type: none"> Minor collectors Roads within special designated areas, or with essential services, schools, transit, steep grades, or with designated City cycling route All other paved Class 4 roads Gravel roads Divided into secondary class A, B, and C Residential roads and lanes are Priority 5 and divided by 3 secondary classes (residential and subdivision roads, lanes, and gravel roads)
Toronto	<ul style="list-style-type: none"> N/A
Montreal	<ul style="list-style-type: none"> N/A
Brandon	<ul style="list-style-type: none"> N/A

REFERENCE

Reference	
Saskatoon	<ul style="list-style-type: none"> • https://www.saskatoon.ca/moving-around/driving-roadways/winter-road-maintenance
Calgary	<ul style="list-style-type: none"> • https://www.calgary.ca/roads/conditions/sanding-plowing-priorities.html
Regina	<ul style="list-style-type: none"> • https://www.regina.ca/export/sites/Regina.ca/city-government/city-council/.galleries/pdfs/Winter-Maintenance-Policy-2021-02-CO-001.pdf
Edmonton	<ul style="list-style-type: none"> • https://www.edmonton.ca/sites/default/files/public-files/Snow-and-Ice-Service-Levels-Mailer.pdf?cb=1743711681
Winnipeg	<ul style="list-style-type: none"> • https://legacy.winnipeg.ca/publicworks/snow/street-priority.stm
Ottawa	<ul style="list-style-type: none"> • https://app06.ottawa.ca/calendar/ottawa/citycouncil/ttc/2003/05-21/Annex%20B(TUP-SOP-0004)%20-%20Roads%20and%20Sidewalks.htm
Toronto	<ul style="list-style-type: none"> • https://www.toronto.ca/services-payments/streets-parking-transportation/road-maintenance/winter-maintenance/levels-of-snow-clearing-service/
Montreal	<ul style="list-style-type: none"> • https://montreal.ca/en/topics/snow-removal-sidewalks-and-streets
Brandon	<ul style="list-style-type: none"> • https://brandon.ca/snow-removal