

Descriptive Statistics for Non-Residential Properties by Type

Descriptive Statistics for Saskatoon's Non-Residential Property Assessments - By Property Type

Automotive Properties			
Descriptive Statistics	2025 Values	2024 Values	Percent Change
Mean	\$ 2,648,236	\$ 2,226,301	19.0%
Median	\$ 1,573,100	\$ 1,447,700	8.7%
Standard Deviation	\$ 3,243,714	\$ 2,288,249	41.8%
Range	\$ 22,526,600	\$ 16,597,100	35.7%
Min. Value	\$ 141,400	\$ 186,100	-24.0%
Max. Value	\$ 22,668,000	\$ 16,783,200	35.1%
Total Value	\$ 643,521,400	\$ 540,991,100	19.0%
# of Properties	243	243	

Warehouse Properties			
Descriptive Statistics	2025 Values	2024 Values	Percent Change
Mean	\$ 2,315,352	\$ 2,108,102	9.8%
Median	\$ 1,501,500	\$ 1,407,950	6.6%
Standard Deviation	\$ 3,422,312	\$ 2,851,535	20.0%
Range	\$ 64,754,600	\$ 52,511,600	23.3%
Min. Value	\$ 70,200	\$ 86,600	-18.9%
Max. Value	\$ 64,824,800	\$ 52,598,200	23.2%
Total Value	\$ 3,084,049,100	\$ 2,807,991,437	9.8%
# of Properties	1332	1332	

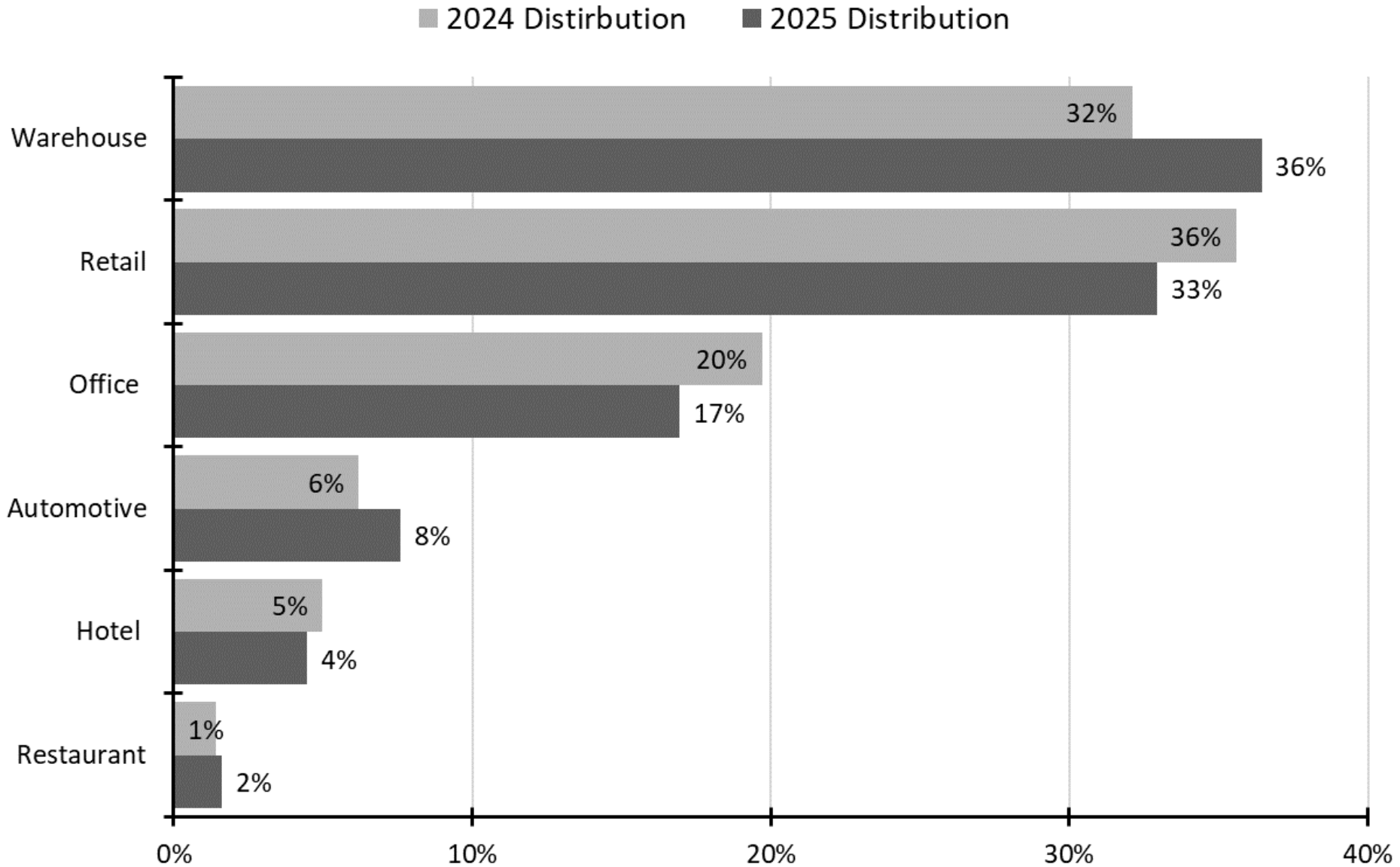
Retail Properties			
Descriptive Statistics	2025 Values	2024 Values	Percent Change
Mean	\$ 4,486,318	\$ 5,003,241	-10.3%
Median	\$ 1,491,200	\$ 1,525,850	-2.3%
Standard Deviation	\$ 11,797,112	\$ 17,042,791	-30.8%
Range	\$ 167,479,300	\$ 312,637,200	-46.4%
Min. Value	\$ 90,100	\$ 116,200	-22.5%
Max. Value	\$ 167,569,400	\$ 312,753,400	-46.4%
Total Value	\$ 2,790,489,950	\$ 3,112,015,672	-10.3%
# of Properties	622	622	

Restaurant Properties			
Descriptive Statistics	2025 Values	2024 Values	Percent Change
Mean	\$ 1,437,382	\$ 1,320,512	8.9%
Median	\$ 1,209,050	\$ 1,176,650	2.8%
Standard Deviation	\$ 867,272	\$ 844,153	2.7%
Range	\$ 3,985,500	\$ 4,086,800	-2.5%
Min. Value	\$ 282,800	\$ 240,000	17.8%
Max. Value	\$ 4,268,300	\$ 4,326,800	-1.4%
Total Value	\$ 135,113,900	\$ 124,128,100	8.9%
# of Properties	\$ 94	94	

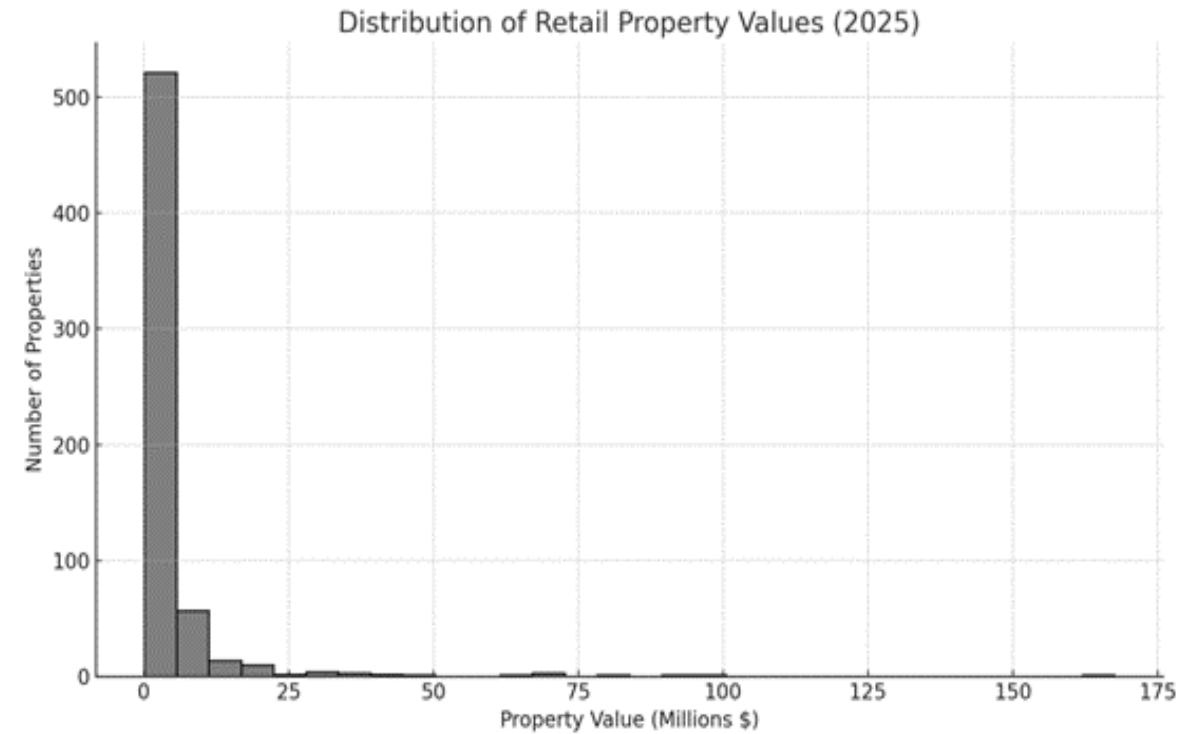
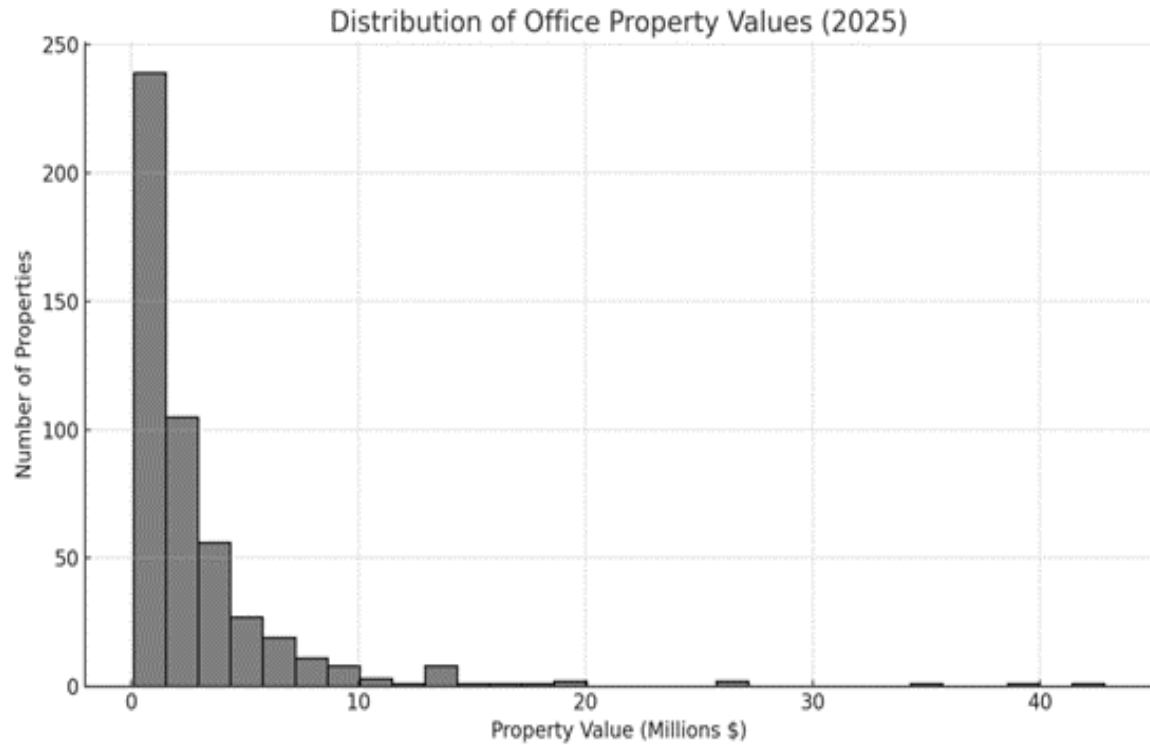
Office Properties			
Descriptive Statistics	2025 Values	2024 Values	Percent Change
Mean	\$ 2,948,770	\$ 3,540,744	-16.7%
Median	\$ 1,542,200	\$ 1,615,800	-4.6%
Standard Deviation	\$ 4,448,141	\$ 6,467,960	-31.2%
Range	\$ 42,757,300	\$ 61,783,600	-30.8%
Min. Value	\$ 82,800	\$ 202,300	-59.1%
Max. Value	\$ 42,840,100	\$ 61,985,900	-30.9%
Total Value	\$ 1,436,051,204	\$ 1,724,342,420	-16.7%
# of Properties	487	487	

Hotel/Motel Properties			
Descriptive Statistics	2025 Values	2024 Values	Percent Change
Mean	\$ 9,434,228	\$ 10,883,100	-13.3%
Median	\$ 8,549,600	\$ 9,268,350	-7.8%
Standard Deviation	\$ 6,325,668	\$ 8,946,674	-29.3%
Range	\$ 23,160,000	\$ 32,933,600	-29.7%
Min. Value	\$ 349,700	\$ 342,700	2.0%
Max. Value	\$ 23,509,700	\$ 33,276,300	-29.4%
Total Value	\$ 377,369,100	\$ 435,324,000	-13.3%
# of Properties	40	40	

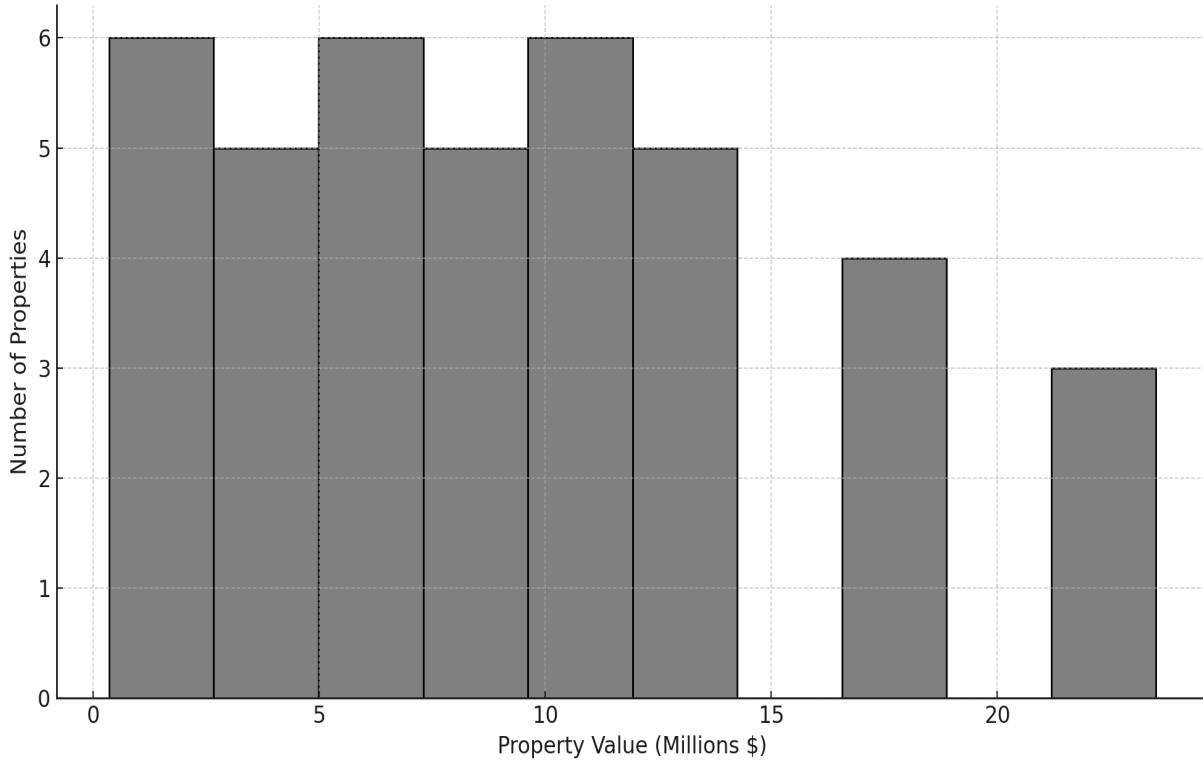
Percent Distribution of Non-Residential Property Values by Property Type



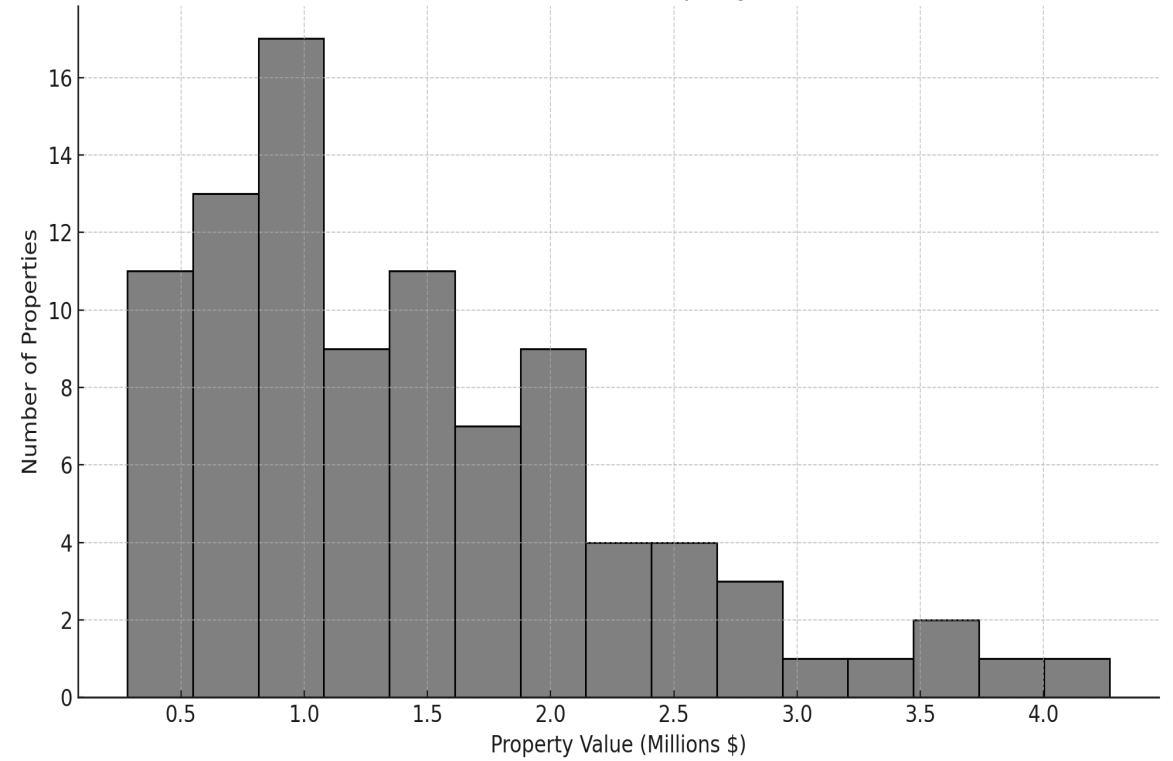
Appendix XX – Distribution of Property Values by Non-Residential Properties Types



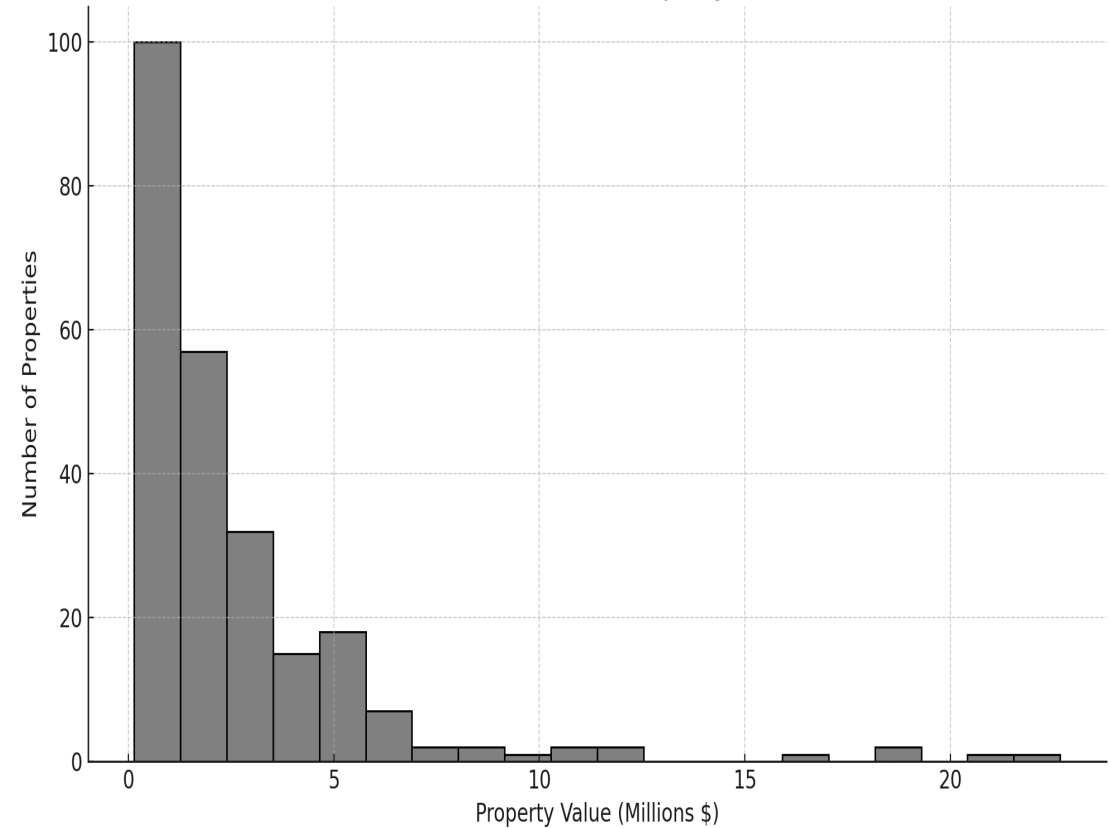
Distribution of Hotel Property Values (2025)



Distribution of Restaurant Property Values (2025)



Distribution of Automotive Property Values (2025)



Distribution of Warehouse Property Values (2025)

