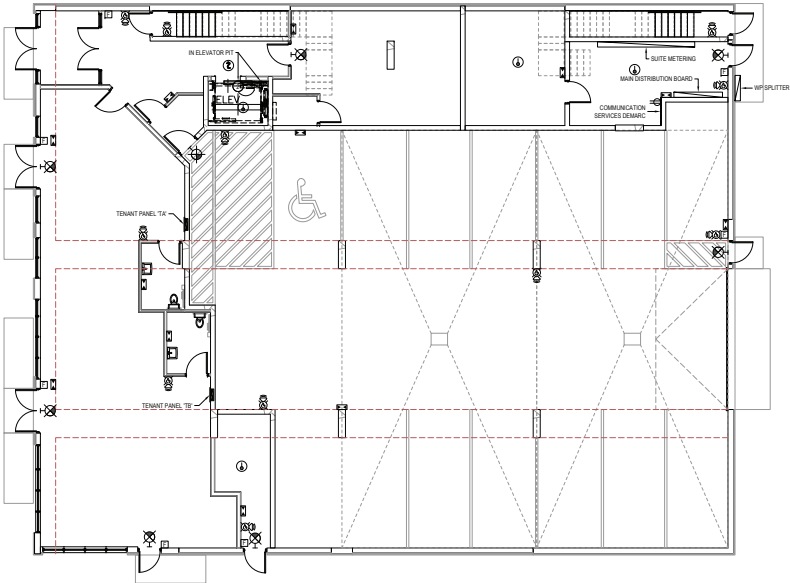


1 PARKADE / SITE PLAN
1:100



ELECTRICAL SYMBOLS LEGEND	
SYMBOL	DESCRIPTION
	LINEAR SOURCE LIGHT FIXTURE - CEILING MOUNT
	NO-INCHES LIGHT FIXTURE - WALL MOUNT
	POINT SOURCE LIGHT FIXTURE - SURFACEMOUNT
	SWITCH 3-WAY 3-POLE 4-POLE 1-TIMELOCK
	PILOT LIGHT SWITCH
	LIGHTING CONTROL WALL SWITCH OCCUPANCY SENSOR DIMMER
	LIGHTING CONTROL CEILING OCCUPANCY SENSOR DIMMER
	LIGHTING CONTROL DIRECTIONAL OCCUPANCY SENSOR DIMMER
	LIGHTING CONTROL DIRECTIONAL OCCUPANCY SENSOR DIMMER
	LIGHTING CONTROL CEILING PHOTOCONTROL
	PHOTOELECTRIC CELL
	DUPLEX RECEPTACLE
	PUL-INTELLIGENT PARKING LOT CONTROL
	MICROWAVE RECEPTACLE
	GROUND FAULT CIRCUIT INTERRUPTER RECEPTACLE
	SPLIT WIRE RECEPTACLE
	RECEPTACLE MODIFIER (REFERS TO ALL RECEPTACLE TYPES WHERE SHOWN)
	JUNCTION BOX / DIRECT CONNECTION
	208V RECEPTACLE
	208V JUNCTION BOX / DIRECT CONNECTION
	NORMAL POWER PANEL AS INDICATED
	MOTOR
	THREE PHASE MOTOR
	DISCONNECT SWITCH
	THERMAL SWITCH
	MOTOR CONTROL PUSH BUTTON STATION
	HEATER B-BASEBOARD F-FORCE FLOW
	THERMOSTAT
	SOLENOID VALVE
	SMOKE DETECTOR
	DUCT TYPE SMOKE DETECTOR
	SMOKE ALARM
	HEAT DETECTOR
	COMBINATION SMOKE/CARBON MONOXIDE ALARM
	ELECTRIC WATER GONG
	FIRE ALARM PULL STATION
	FIRE ALARM HORN/STROBE
	FIRE ALARM HORN C/W SILENCE BUTTON
	FIRE ALARM MONITOR (DRY CONTACT) MODULE
	FIRE ALARM ISOLATION MODULE
	COMBINATION SMOKE / FIRE DAMPER CONNECTION
	EMERGENCY BATTERY UNIT WITH NO LIGHTING HEADS OR 3 HEADS
	REMOTE EMERGENCY LIGHTS, SINGLE & DOUBLE
	COMBINATION EXIT SIGN EMERGENCY BATTERY UNIT WITH HEADS
	EXIT LIGHT - SURFACE/WALL MOUNT (SHADING INDICATES LIT FACE)
	SPRINKLER TAMPER SWITCH
	SPRINKLER FLOW SWITCH
	COMBINATION CATV COAX OUTLET
	BARRIER FREE DOOR PUSHBUTTON
	DOOR ACCESS CARD READER
	DOOR ACCESS DEVICE - ELECTRIC STRIKE
	DOOR ACCESS DEVICE - DOOR CONTACT

ABBREVIATIONS	
AFF	ABOVE FINISHED FLOOR
AFG	ABOVE FINISHED GRADE
ATS	AUTOMATIC TRANSFER SWITCH
BND	BOND
CLO	CEILING MOUNTED
CW	COMPLETE WITH
DIS	DISCONNECT SWITCH
DISP	DISPENSER
E	EXISTING TO REMAIN
EC	EMPTY CORDOUT C/W PULL STRING
EM	EMERGENCY
EXT	EXTENDING RELOCATED POSITION
EXT	EXTENDING
FACP	FIRE ALARM CONTROL PANEL
FL	FIRE LAMP
GRD	GROUND
LI	LIFE SAFETY
MTD	MOUNTED
NE	NEW DEVICE EXISTING LOCATION
R	REMOVE
RE	REMOVE AND REINSTALL
SLD	SINGLE LINE DIAGRAM
UND	UNDERGROUND
US	UNDERSE
WAP	WIRELESS ACCESS POINT
WP	WEATHERPROOF
XP	EXPLOSION PROOF

PALEY AND ASSOCIATES



REVISIONS		
REV.	DESCRIPTION	DATE

PROJECT:
**PROPOSED SIX STOREY
APARTMENT WITH RETAIL**

1202 COLLEGE DRIVE
SASKATOON, SASKATCHEWAN

CONTENTS:
**PARKADE / SITE PLAN
ELECTRICAL LAYOUT**

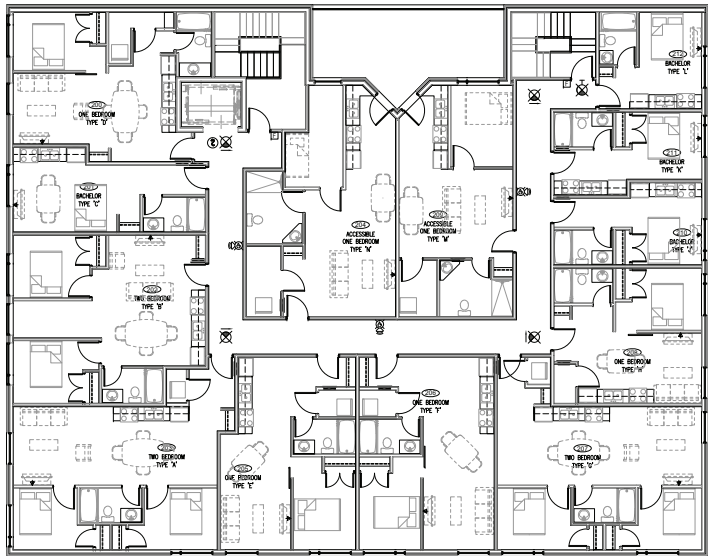
DRAWN: ARZ
CHECKED: LAP
DATE: DEC 30/24
FILE: 94-016

SHEET NO:
E1.1

PALEY AND ASSOCIATES

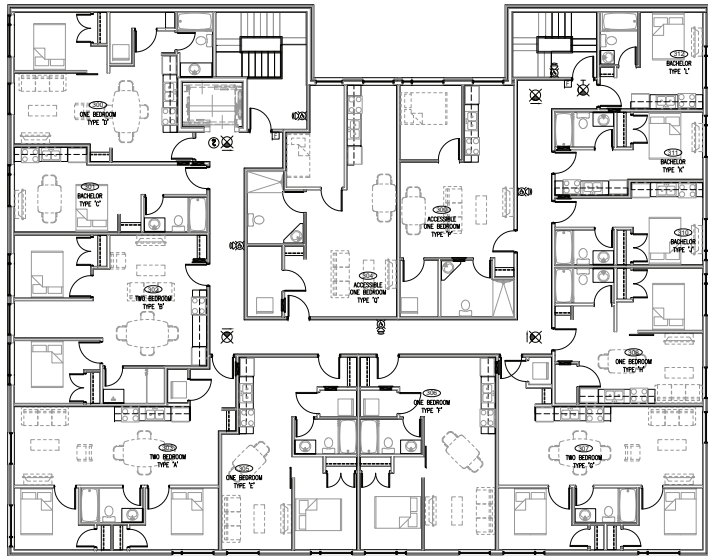


CONSULTING ELECTRICAL ENGINEERS
3 - 2217 HANDELMAN COURT SASKATOON, SK. S7L 6A8 OFFICE PALE-859-4448 CA

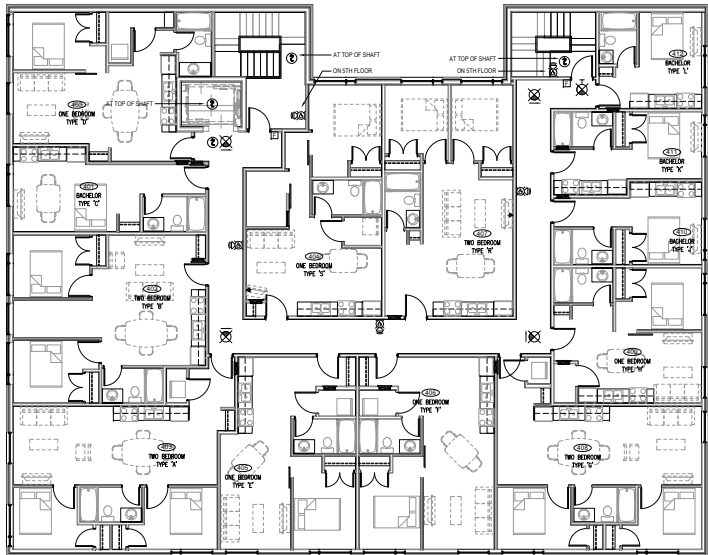


SECOND FLOOR PLAN
E2.1 1/100

COMBID COMMONS ALARMS THIS FLOOR ONLY OTHER FLOORS
SMOKE ALARM ONLY AT THESE LOCATIONS.



THIRD FLOOR PLAN
E2.1 1/100



TYPICAL PLAN (4TH, 5TH, 6TH)
E2.1 1/100

REVISIONS		
REV#	DESCRIPTION	DATE

PROJECT:
**PROPOSED SIX STOREY
APARTMENT WITH RETAIL**

1202 COLLEGE DRIVE
SASKATOON, SASKATCHEWAN

CONTENTS:
**OVERALL FLOOR PLANS
ELECTRICAL LAYOUT**

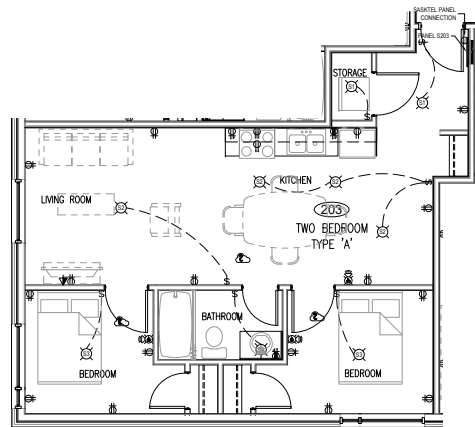
DRAWN: ARZ
CHECKED: LAP
DATE: DEC 30/24
FILE: 94-016

SHEET NO:
E2.1

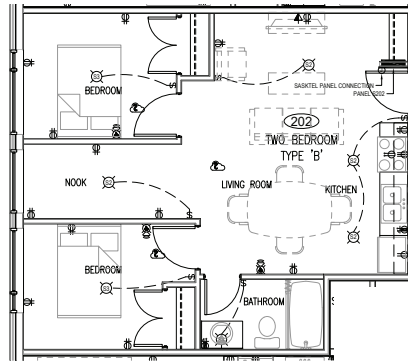
PALEY AND ASSOCIATES



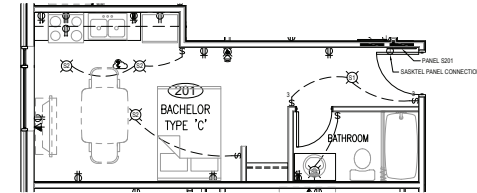
CONSULTING ELECTRICAL ENGINEERS
3 - 2117 HANDELMAN COURT SASKATOON, SK S7L 6A8 OFFICE: 306.954.9544
FAX: 306.954.9545



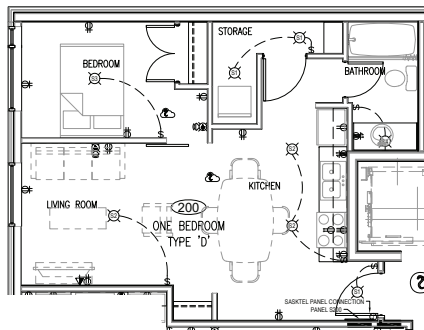
1 SUITE A PLAN
E3.1/150



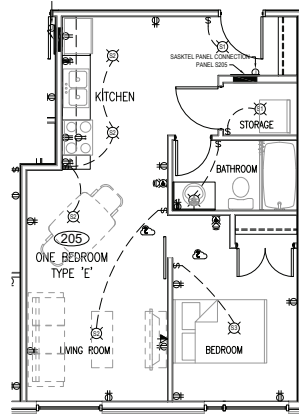
2 SUITE B PLAN
E3.1/150



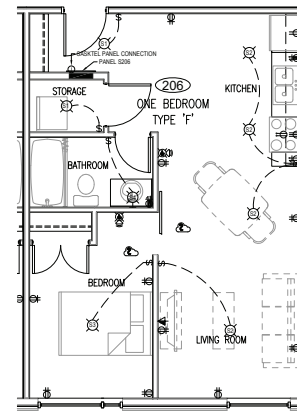
3 SUITE C PLAN
E3.1/150



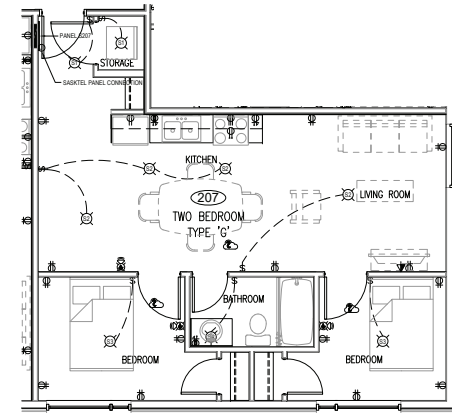
4 SUITE D PLAN
E3.1/150



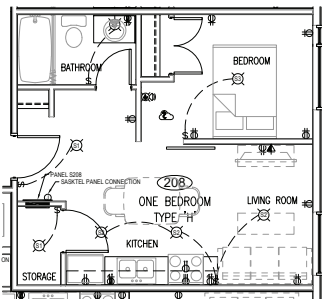
5 SUITE E PLAN
E3.1/150



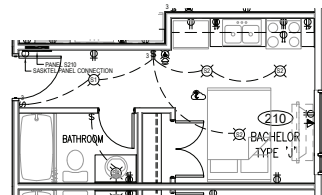
6 SUITE F PLAN
E3.1/150



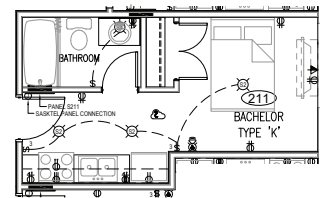
7 SUITE G PLAN
E3.1/150



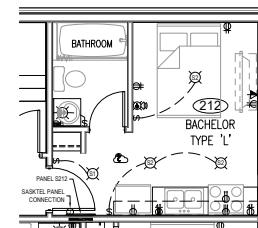
8 SUITE H PLAN
E3.1/150



9 SUITE I PLAN
E3.1/150



10 SUITE J PLAN
E3.1/150



11 SUITE L PLAN
E3.1/150

REVISIONS		
REV#	DESCRIPTION	DATE

PROJECT:
**PROPOSED SIX STOREY
APARTMENT WITH RETAIL**
1202 COLLEGE DRIVE
SASKATOON, SASKATCHEWAN
CONTENTS:
**SUITE FLOOR PLANS
ELECTRICAL LAYOUT**

DRAWN: ARZ
CHECKED: LAP
DATE: DEC 30/24
FILE: 94-016

SHEET NO:
E3.1

PALEY AND ASSOCIATES



CONSULTING ELECTRICAL ENGINEERS
3 - 2217 HANDELMAN COURT SASKATOON, SK S7L 6A8 OFFICE: (306) 954-9544
306.954.9544

REVISIONS		
REV#	DESCRIPTION	DATE

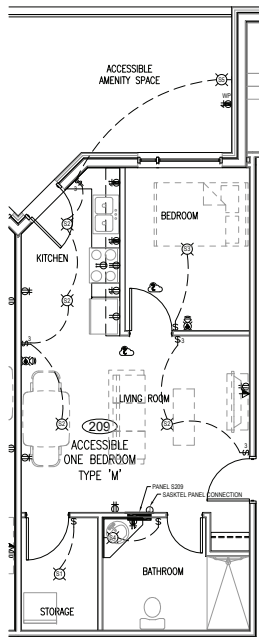
PROJECT:
PROPOSED SIX STOREY
APARTMENT WITH RETAIL

1202 COLLEGE DRIVE
SASKATOON, SASKATCHEWAN

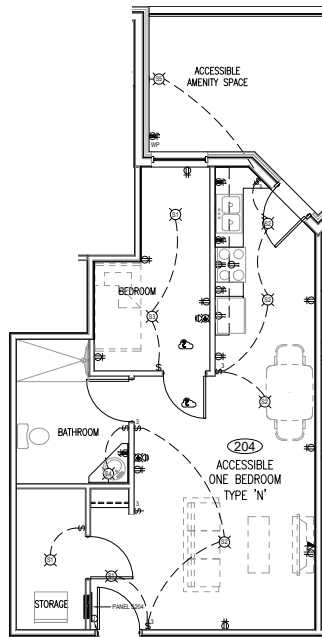
CONTENTS:
SUITE FLOOR PLANS
ELECTRICAL LAYOUT

DRAWN: ARZ
CHECKED: LAP
DATE: DEC 30/24
FILE: 94-016

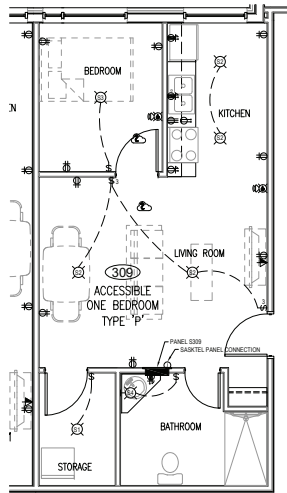
SHEET NO:
E3.2



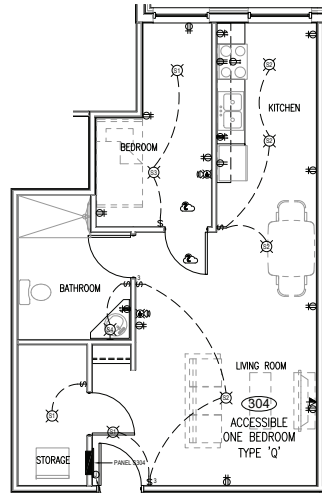
1 SUITE M PLAN
E3.1 150



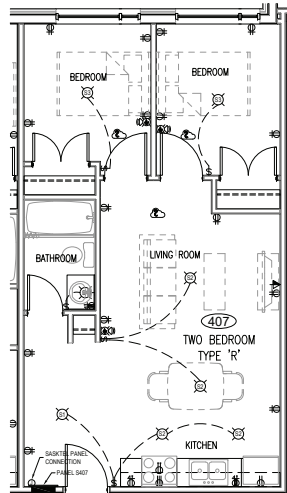
2 SUITE N PLAN
E3.1 150



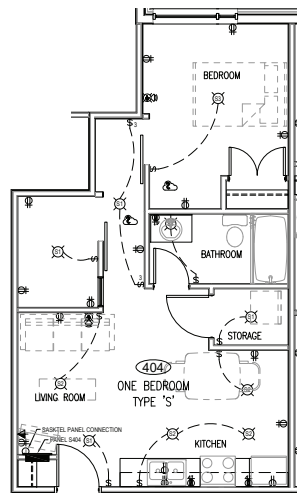
3 SUITE P PLAN
E3.1 150



4 SUITE Q PLAN
E3.1 150



5 SUITE R PLAN
E3.1 150

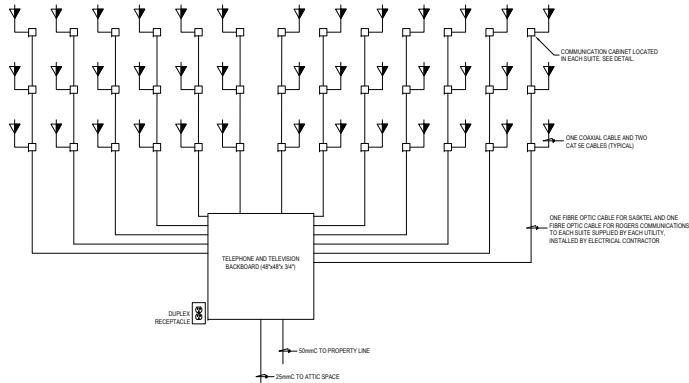


6 SUITE S PLAN
E3.1 150

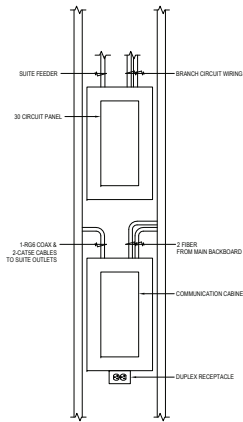
PALEY AND ASSOCIATES



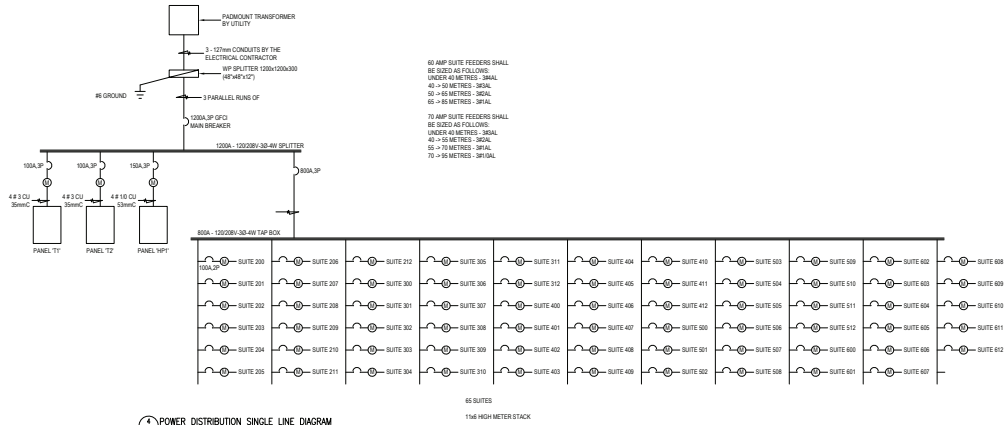
CONSULTING ELECTRICAL ENGINEERS
3 - 2217 HANDELMAN COURT SASKATOON, SK S7L 6A8 306.954.9544
OFFICE PAUL@P&A.CA



1. CABLE TELEVISION CONDUIT SYSTEM SCHEMATIC
1/4" = 1' NO SCALE



2. ELECTRICAL & COMMUNICATION CABINET DETAIL
1/4" = 1' NO SCALE



3. POWER DISTRIBUTION SINGLE LINE DIAGRAM
1/4" = 1' NO SCALE

REVISIONS		
REV#	DESCRIPTION	DATE

PROJECT:
**PROPOSED SIX STOREY
APARTMENT WITH RETAIL**
1202 COLLEGE DRIVE
SASKATOON, SASKATCHEWAN
CONTENTS:
**ELECTRICAL
SCHEMATICS**

DRAWN: ARZ
CHECKED: LAP
DATE: DEC 03/24
FILE: 94-016
SHEET NO:
E4.1

