

NOTES:

-ALL DIMENSIONS ARE IN METERS UNLESS OTHERWISE NOTED
-NOT ALL UTILITIES MAY BE SHOWN, ALL UTILITIES SHOWN ARE APPROXIMATE. CONTRACTOR TO CONFIRM LOCATIONS & ELEVATIONS OF ALL UTILITIES PRIOR TO CONSTRUCTION
-ALL WORK TO BE CONSTRUCTED IN STRICT ACCORDANCE WITH CITY OF SASKATOON STANDARD DRAWINGS & SPECIFICATIONS.



CATTERALL & WRIGHT
CONSULTING ENGINEERS

1231 - 8th STREET EAST
SASKATOON, SK S7H 0S5
TEL: (306) 343-7280 | www.cwce.ca

PRELIMINARY
NOT FOR CONSTRUCTION

LEGEND:

- EXIST. MANHOLE
- EXIST. CATCH BASIN IN CURB
- EXIST. FLOW DIRECTION
- EXIST. HYDRANT
- EXIST. VALVE
- EXIST. TEE
- EXIST. BEND
- EXIST. POWER POLE
- EXIST. LIGHT STANDARD
- EXIST. POWER PEDESTAL
- EXIST. PHONE PEDESTAL
- EXIST. SIGN
- EXIST. TREE
- EXIST. VERTICAL CURB & GUTTER
- EXIST. FENCE
- EXIST. GAS LINE
- EXIST. PHONE LINE
- EXIST. OVERHEAD POWER LINE
- EXIST. UNDERGROUND POWER LINE
- EXIST. GROUND CONTOUR
- VERTICAL CURB & GUTTER REMOVAL
- EXIST. CONCRETE
- DESIGN CONCRETE
- EXIST. ASPHALT
- ASPHALT REMOVAL
- EXIST. BUILDING

SCALE VERIFICATION

WHEN DRAWING IS PLOTTED FULL
SIZE THIS LINE IS 60mm IN LENGTH.

DATE	REVISION

25/01/07 ISSUED FOR REVIEW

OWNER/CLIENT

14 NORTH
CONSTRUCTION

LOCATION

SASKATOON, SK

PROJECT

1202 COLLEGE DRIVE

SHEET TITLE

EXIST. CONDITIONS
& REMOVALS PLAN

SCALE	1:150	DESIGNED	RJR
DRAWN	DFA	CHECKED	
DATE	24/12/04	SHEET	1 of 3
DRAWING NUMBER	799-00901		



CATTERALL & WRIGHT
CONSULTING ENGINEERS

1231 - 8th STREET EAST
SASKATOON, SK S7H 0S5

TEL: (306) 343-7280 | www.cwce.ca

PRELIMINARY
NOT FOR CONSTRUCTION

LEGEND:

- MANHOLE
- CATCH BASIN / CATCH BASIN MANHOLE
- EXIST. CATCH BASIN IN CURB
- FLOW DIRECTION
- EXIST. HYDRANT
- EXIST. VALVE
- DESIGN VALVE
- TEE
- BEND
- EXIST. POWER POLE
- EXIST. LIGHT STANDARD
- EXIST. POWER PEDESTAL
- EXIST. PHONE PEDESTAL
- EXIST. SIGN
- EXIST. TREE
- EXIST. VERTICAL CURB & GUTTER
- DESIGN VERTICAL CURB & GUTTER
- BARRIER CURB
- FENCE
- EXIST. GAS LINE
- EXIST. PHONE LINE
- EXIST. OVERHEAD POWER LINE
- EXIST. UNDERGROUND POWER LINE
- EXIST. CONCRETE
- DESIGN CONCRETE
- EXIST. BUILDING

SCALE VERIFICATION

WHEN DRAWING IS PLOTTED FULL
SIZE THIS LINE IS 60mm IN LENGTH.

DATE REVISION

25/01/07 ISSUED FOR REVIEW

OWNER/CLIENT

**14 NORTH
CONSTRUCTION**

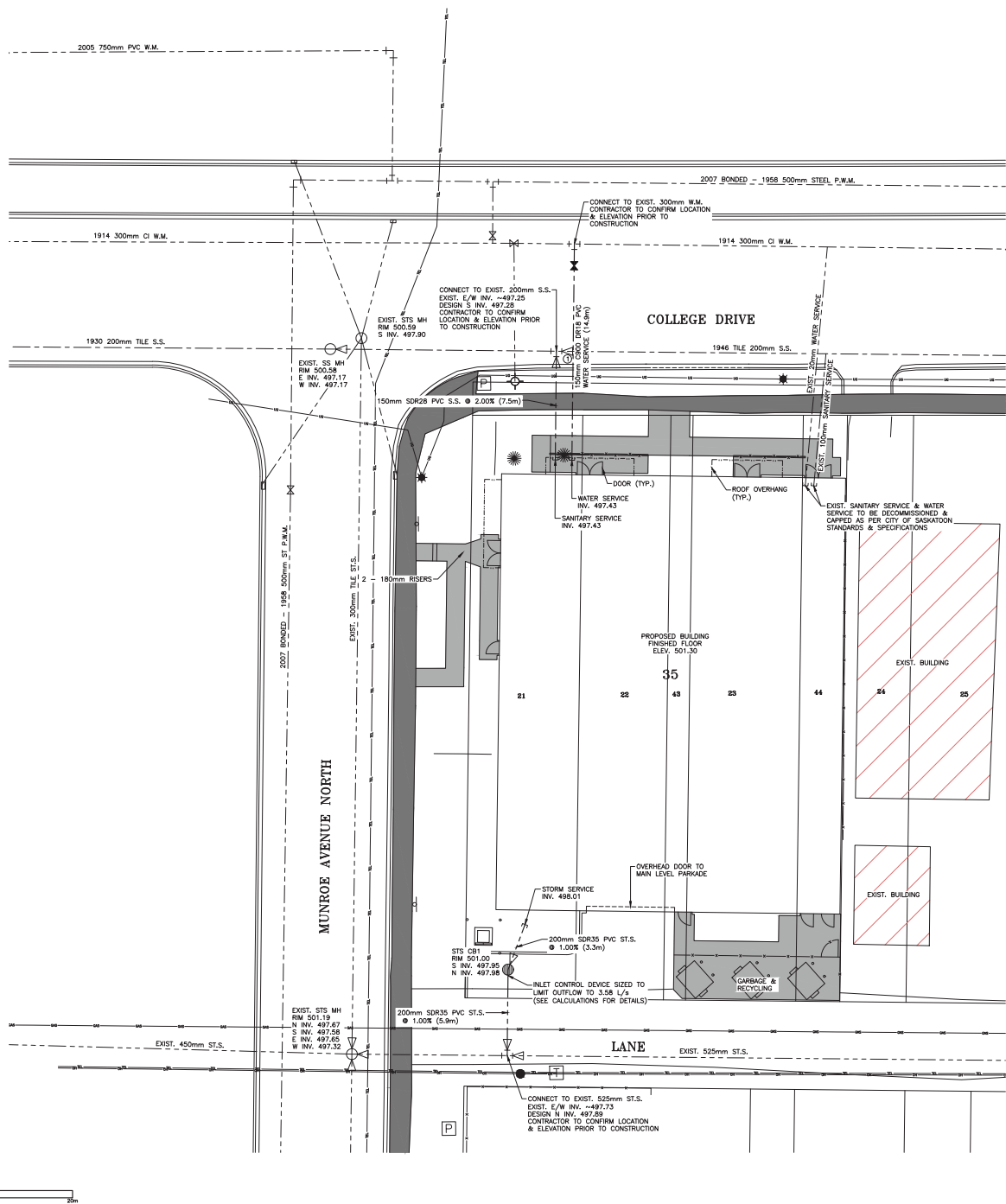
LOCATION
SASKATOON, SK

PROJECT
1202 COLLEGE DRIVE

SHEET TITLE
SERVICING PLAN

SCALE 1:150
DRAWN DFA
DATE 24/12/04
DRAWING NUMBER 799-00903

DESIGNED
CHECKED
SHEET 3 of 3



PIPE CROSSING DATA:

- ① EXIST. 200mm S.S. INV. ~497.26
150mm W.M. INV. 497.43

STORM SEWER ID	BARREL DIAMETER
STS CB1	1200mm

ALLOWABLE DISCHARGE

NOTE:
STORAGE CALCULATIONS BASED ON COS DSM
MAXIMUM ALLOWABLE DISCHARGE RATE:
 $Cd = 0.3$ CITY OF SASKATOON DESIGN C FACTOR

$$FLOW(L/s/m^2) = 114 \cdot Cd$$

$$FLOW(L/s) = 5.58$$

ORIFICE SIZE CALCULATION

$Q = 0.00358$ ALLOWABLE RELEASE RATE (c.u.m/s)
 $K = 0.61$ CONSTANT
 $A = 0.0008$ AREA OF ORIFICE (sq.m)
 $g = 9.81$ ACCELERATION OF GRAVITY (m/s²)
 $h = 3.09$ HEAD (m)

$$Q = KA(2gh)^{0.5}$$

$$A = 0.0008 \text{ sq.m}$$

$$DIAMETER = 0.031 \text{ m}$$

NOTES:

- ALL DIMENSIONS ARE IN METERS UNLESS OTHERWISE NOTED
- NOT ALL UTILITIES MAY BE SHOWN. ALL UTILITIES SHOWN ARE APPROXIMATE. CONTRACTOR TO CONFIRM LOCATIONS & ELEVATIONS OF ALL UTILITIES PRIOR TO CONSTRUCTION
- ALL WORK TO BE CONSTRUCTED IN STRICT ACCORDANCE WITH CITY OF SASKATOON STANDARD DRAWINGS & SPECIFICATIONS.