

City of Saskatoon Development Appeal Application- page 2

THIS PAGE WILL FORM PART OF THE PUBLIC RECORD FOR THE APPEAL

Applicant Name: _____

Registered Property Owner(s):
(if different from above): _____

Location of Subject Property

Legal Description

Lot (s) _____ Block _____ Plan No. _____

Civic Address: _____

Present Status of Building or Structure Under Appeal:

☐ Construction not yet begun ☐ Under Construction ☐ Completed

Type of Construction:

☐ Residential ☐ Commercial ☐ Industrial ☐ Other
(specify) _____

Description of Development Appeal: (example: side yard deficiency, parking deficiency, etc.)

Reason for Development Appeal: (as per *The Planning and Development Act, 2007*, applicants have 5 days prior to the appeal hearing date to submit drawings and written materials)

BOTH SIDES OF THIS FORM MUST BE COMPLETED





MONROE AVENUE N

CHECKED: - A 2.1
DATE: AUG. 23, 2024
JOB NO.: 2024-17 2 OF -- PAGES

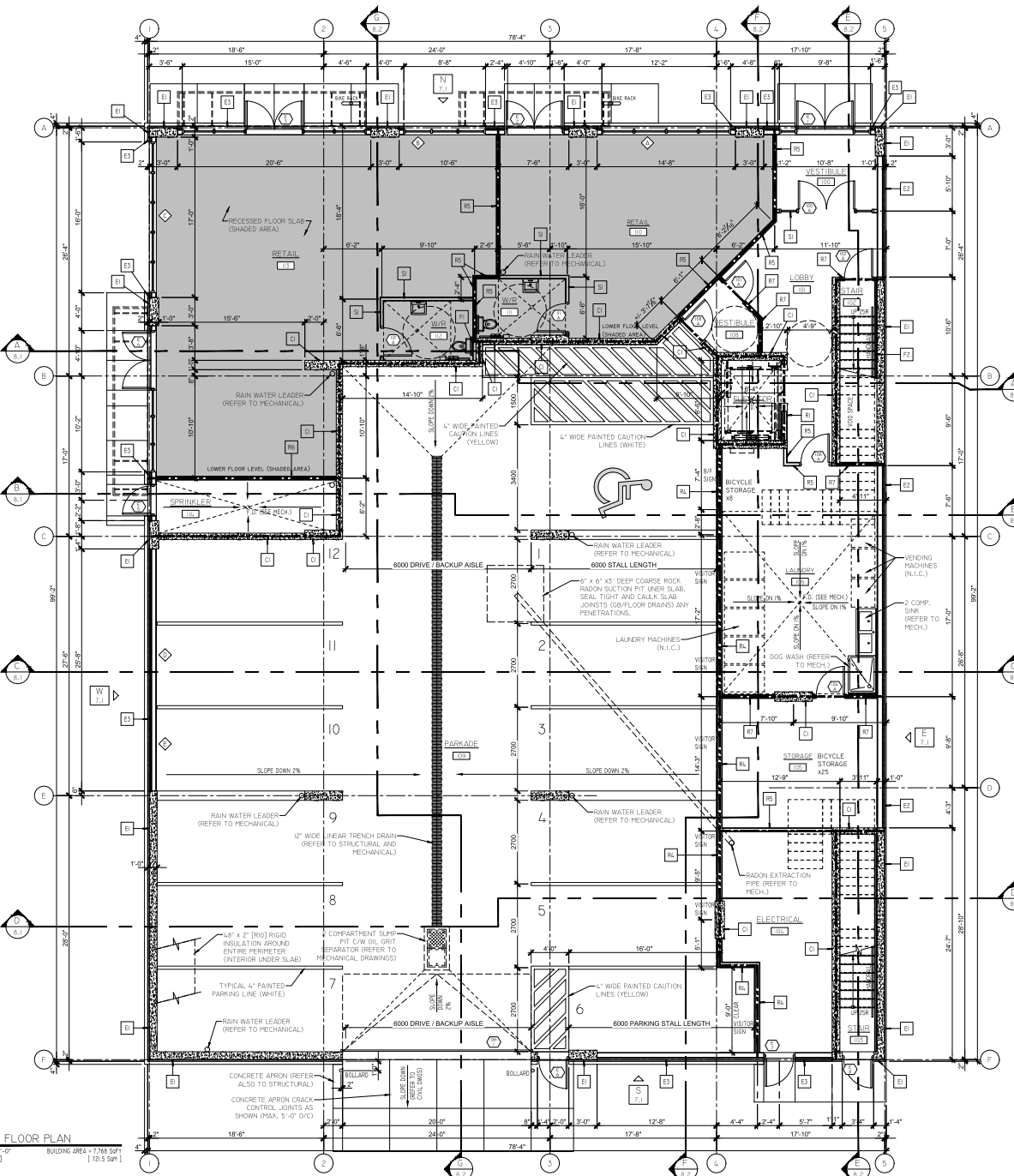
A 2.1
2 OF -- PAGES

GENERAL NOTES

- THIS DRAWING MUST NOT BE SCALED
- VERIFY ALL DIMENSIONS AND DATUMS PRIOR TO COMMENCEMENT OF WORK. REPORT ALL ERRORS AND OMISSIONS TO THE CONSULTANT IMMEDIATELY.
- VARIATIONS AND MODIFICATIONS ARE NOT ALLOWED WITHOUT THE WRITTEN PERMISSION FROM THE CONSULTANT. THIS DRAWING IS THE EXCLUSIVE PROPERTY OF JAMES D. ZIMMER ARCHITECT.
- ANY REPRODUCTIONS WITHOUT WRITTEN CONSENT IS STRICTLY PROHIBITED.



- E1- TYPICAL 1.0 HR FRR LOADBEARING EXTERIOR NONCOMBUSTIBLE CLAD CONCRETE SHEAR WALL CONSTRUCTION**
(REF: 2000 TABLE 9.0.3.1-A & NO. 50R-10 HR STC 34)
- ACRYLIC STUCCO EXTERIOR EPS SYSTEMS TO ADEX SYSTEM INC. DESIGN NO. ASUWEIPS 25-01(EPS) ADEX-RS SYSTEMS CANULC S34 (INTERTEK APPROVAL, OCTOBER 9, 2008) (DEEMED NONCOMBUSTIBLE)
 - 2" EPS EXTERIOR NONCOMBUSTIBLE CLADDING, WOODPECKER RESISTANT ACRYLIC ADEX STUCCO FINISH AND PRIME COAT ON ADEX MESH 3" ADEX-20 OR ADEX FLAT INSULATION BOARD, INCLUDE NOT LESS THAN 1/4" DEEP DRAINAGE PATH FOR WATER THAT PENETRATES PAST THE EXTERIOR CLADDING.
 - ADEX SYSTEMS WATER RESISTIVE BARRIER
 - 10" CONCRETE SHEAR WALL
 - NOTE: REFER TO PLAN FOR LOCATIONS WHERE EPS CLADDING NEED NOT BE NONCOMBUSTIBLE.
- E2- TYPICAL NONCOMBUSTIBLE / NONCOMBUSTIBLE CLAD 1.0 HR FRR WALL WITH 10 LB LOAD BEARING EXTERIOR WALL CONSTRUCTION**
(REF: 2000 TABLE 9.0.3.1-A & NO. 50R-10 HR STC 34)
- ACRYLIC STUCCO EXTERIOR EPS SYSTEMS TO ADEX SYSTEM INC. DESIGN NO. ASUWEIPS 25-01(EPS) ADEX-RS SYSTEMS CANULC S34 (INTERTEK APPROVAL, OCTOBER 9, 2008) (DEEMED NONCOMBUSTIBLE)
 - 2" EPS EXTERIOR NONCOMBUSTIBLE CLADDING, WOODPECKER RESISTANT ACRYLIC ADEX STUCCO FINISH AND PRIME COAT ON ADEX MESH 3" ADEX-20 OR ADEX FLAT INSULATION BOARD, INCLUDE NOT LESS THAN 1/4" DEEP DRAINAGE PATH FOR WATER THAT PENETRATES PAST THE EXTERIOR CLADDING.
 - ADEX SYSTEMS WATER RESISTIVE BARRIER
 - 5/8" TYPE X GLASS / DENSGLAS SHEATHING, FIRE TAPED
 - 2 1/2" STEEL STUDS AT 16" O.C.
 - 1/2" ROCKWOOL
 - 5/8" TYPE X GYPSUM BOARD, FIRE TAPED
 - 1/2" PLYWOOD SHEATHING
 - 2" X 4" WOOD STUDS, STUD SPACING REFER TO STRUCTURAL
 - 5 1/2" FIBERGLASS INSULATION
 - 5/8" TYPE X GYPSUM BOARD, TAPED, SANDED AND PAINTED
 - FRR (MAX FLAME SPREAD RATING 150) LINER TO 4" HIGH ON PARKADE SIDE
- C1- PL PARKADE CONCRETE DEMISING WALL CONSTRUCTION**
(N.E.C.)
- EXPOSED CONCRETE FINISH
 - CONCRETE WALL OR COLUMN (REFER TO STRUCTURAL) C/W NOT LESS THAN 1" CONCRETE COVER OVER REINFORCED STEEL
 - EXPOSED CONCRETE FINISH
- B1- ELEVATOR FRAMING (LOBBY / CORRIDOR)**
(N.E.C., 2000 TABLE 9.0.3.1-A & NO. W02-1.5 HR STC 34) (ISM T0)
- ELEVATOR SIDE
 - DOUBLE LAYER 5/8" TYPE X GYPSUM BOARD, TAPED, SANDED AND PAINTED EXPOSED (SIDE) (ELEVATOR SIDE)
 - 3/4" PLYWOOD SHEATHING SHUTT LINDER (REFER TO STRUCTURAL)
 - LOAD BEARING WALL, 2" X 6" WOOD STUDS, STUD SPACING REFER TO STRUCTURAL (WOOD BLOCKING FIRE STOPPING MAX 10 FT O.C. HORIZONTAL)
 - 5/8" TYPE X GYPSUM BOARD, TAPED, SANDED AND PAINTED EXPOSED (SIDE)
- B4- PL PARKADE FRAMING**
(N.E.C., 2000 TABLE 9.0.3.1-A & NO. W02-1.5 HR STC 34) (ISM T0)
- PARKADE SIDE
 - FRR LINER (MAX FLAME SPREAD RATING 150) TO 48" HIGH
 - DOUBLE LAYER 5/8" TYPE X GYPSUM BOARD, TAPED, SANDED AND PAINTED EXPOSED (SIDE)
 - LOAD BEARING WALL, 2" X 6" WOOD STUDS, STUD SPACING REFER TO STRUCTURAL (WOOD BLOCKING FIRE STOPPING MAX 10 FT O.C. HORIZONTAL)
 - 5/8" TYPE X GYPSUM BOARD, TAPED, SANDED AND PAINTED EXPOSED (SIDE)
- B6- TENANT / LAUNDRY FIRE SEPARATION**
(N.E.C., 2000 TABLE 9.0.3.1-A & NO. S01-1.0 HR STC 30)
- 5/8" TYPE X GYPSUM BOARD, TAPED, SANDED AND PAINTED EXPOSED (SIDE)
 - 3 5/8" STEEL STUDS AT 16" O.C. C/W REQ'D BRIDGING AND BRACING
 - 3 1/2" MINERAL WOOL INSULATION
 - 5/8" TYPE X GYPSUM BOARD, TAPED, SANDED AND PAINTED EXPOSED (SIDE)
- B8- SPRINKLER / RETAIL FIRE SEPARATION**
(N.E.C., 2000 TABLE 9.0.3.1-A & NO. S01-1.0 HR STC 34) (ISM T0)
- SPRINKLER ROOM SIDE
 - 1/2" PLYWOOD SHEATHING
 - 5/8" TYPE X GYPSUM BOARD, TAPED, SANDED AND PAINTED EXPOSED (SIDE)
 - 3 5/8" STEEL STUDS AT 16" O.C. C/W REQ'D BRIDGING AND BRACING
 - 3 1/2" MINERAL WOOL INSULATION
 - 5/8" TYPE X GYPSUM BOARD, TAPED, SANDED AND PAINTED EXPOSED (SIDE)
- B7- STEEL STUD FRAMED FIRE SEPARATION**
(GYPSUM ASSOCIATION NO. SWP-1072-1.0 HR STC 45)
- 5/8" TYPE X GYPSUM BOARD, TAPED, SANDED AND PAINTED EXPOSED (SIDE)
 - 3 5/8" STEEL STUDS AT 16" O.C. C/W REQ'D BRIDGING AND BRACING
 - 5/8" TYPE X GYPSUM BOARD, TAPED, SANDED AND PAINTED EXPOSED (SIDE)
- F1- 1/2" STEEL STUD FRAMING WALL CONSTRUCTION**
- 1/2" GYPSUM BOARD, TAPED, SANDED AND PAINTED EACH SIDE (WATER RESISTANT GYPSUM BOARD IN WASHROOMS)
 - 3 5/8" STEEL STUDS 16" O.C.
- F2- PL STAIR FLOORING WALL CONSTRUCTION**
- 5/8" GYPSUM BOARD, TAPED, SANDED AND PAINTED
 - 2" STEEL STUDS 16" O.C. (ANCHOR BACK TO CONCRETE WALL AS REQ'D)
- S1- INTERIOR STEEL STUD INSULATED WALL CONSTRUCTION**
- 1/2" GYPSUM BOARD, TAPED, SANDED AND PAINTED EACH SIDE
 - 3 5/8" STEEL STUDS 16" O.C.
 - 3 1/2" ACOUSTIC INSULATION
 - 1/2" GYPSUM BOARD, TAPED, SANDED AND PAINTED EACH SIDE (WATER RESISTANT GYPSUM BOARD IN WASHROOMS)
- S2- INTERIOR STEEL STUD WALL CONSTRUCTION**
- 1/2" GYPSUM BOARD, TAPED, SANDED AND PAINTED EACH SIDE
 - 3 5/8" STEEL STUDS 16" O.C.
 - 1/2" GYPSUM BOARD, TAPED, SANDED AND PAINTED EACH SIDE



No.	REVISION	DATE
1	ISSUED FOR PERMIT	10/15/2024
2	REVISION	10/15/2024
3	REVISION	10/15/2024
4	REVISION	10/15/2024
5	REVISION	10/15/2024
6	REVISION	10/15/2024
7	REVISION	10/15/2024
8	REVISION	10/15/2024
9	REVISION	10/15/2024
10	REVISION	10/15/2024
11	REVISION	10/15/2024
12	REVISION	10/15/2024
13	REVISION	10/15/2024
14	REVISION	10/15/2024
15	REVISION	10/15/2024
16	REVISION	10/15/2024
17	REVISION	10/15/2024
18	REVISION	10/15/2024
19	REVISION	10/15/2024
20	REVISION	10/15/2024
21	REVISION	10/15/2024
22	REVISION	10/15/2024
23	REVISION	10/15/2024
24	REVISION	10/15/2024
25	REVISION	10/15/2024
26	REVISION	10/15/2024
27	REVISION	10/15/2024
28	REVISION	10/15/2024
29	REVISION	10/15/2024
30	REVISION	10/15/2024
31	REVISION	10/15/2024
32	REVISION	10/15/2024
33	REVISION	10/15/2024
34	REVISION	10/15/2024
35	REVISION	10/15/2024
36	REVISION	10/15/2024
37	REVISION	10/15/2024
38	REVISION	10/15/2024
39	REVISION	10/15/2024
40	REVISION	10/15/2024
41	REVISION	10/15/2024
42	REVISION	10/15/2024
43	REVISION	10/15/2024
44	REVISION	10/15/2024
45	REVISION	10/15/2024
46	REVISION	10/15/2024
47	REVISION	10/15/2024
48	REVISION	10/15/2024
49	REVISION	10/15/2024
50	REVISION	10/15/2024
51	REVISION	10/15/2024
52	REVISION	10/15/2024
53	REVISION	10/15/2024
54	REVISION	10/15/2024
55	REVISION	10/15/2024
56	REVISION	10/15/2024
57	REVISION	10/15/2024
58	REVISION	10/15/2024
59	REVISION	10/15/2024
60	REVISION	10/15/2024
61	REVISION	10/15/2024
62	REVISION	10/15/2024
63	REVISION	10/15/2024
64	REVISION	10/15/2024
65	REVISION	10/15/2024
66	REVISION	10/15/2024
67	REVISION	10/15/2024
68	REVISION	10/15/2024
69	REVISION	10/15/2024
70	REVISION	10/15/2024
71	REVISION	10/15/2024
72	REVISION	10/15/2024
73	REVISION	10/15/2024
74	REVISION	10/15/2024
75	REVISION	10/15/2024
76	REVISION	10/15/2024
77	REVISION	10/15/2024
78	REVISION	10/15/2024
79	REVISION	10/15/2024
80	REVISION	10/15/2024
81	REVISION	10/15/2024
82	REVISION	10/15/2024
83	REVISION	10/15/2024
84	REVISION	10/15/2024
85	REVISION	10/15/2024
86	REVISION	10/15/2024
87	REVISION	10/15/2024
88	REVISION	10/15/2024
89	REVISION	10/15/2024
90	REVISION	10/15/2024
91	REVISION	10/15/2024
92	REVISION	10/15/2024
93	REVISION	10/15/2024
94	REVISION	10/15/2024
95	REVISION	10/15/2024
96	REVISION	10/15/2024
97	REVISION	10/15/2024
98	REVISION	10/15/2024
99	REVISION	10/15/2024
100	REVISION	10/15/2024

JAMES ZIMMER ARCHITECT
1010-2002 QUEBEC AVE.
SASKATCHEWAN, SK
S4N 1G5
306-703-6667

PROPOSED
COLLEGE DRIVE APARTMENTS

1202 COLLEGE DRIVE
SASKATCHEWAN, SK
MAIN FLOOR PLAN

SCALE: AS NOTED

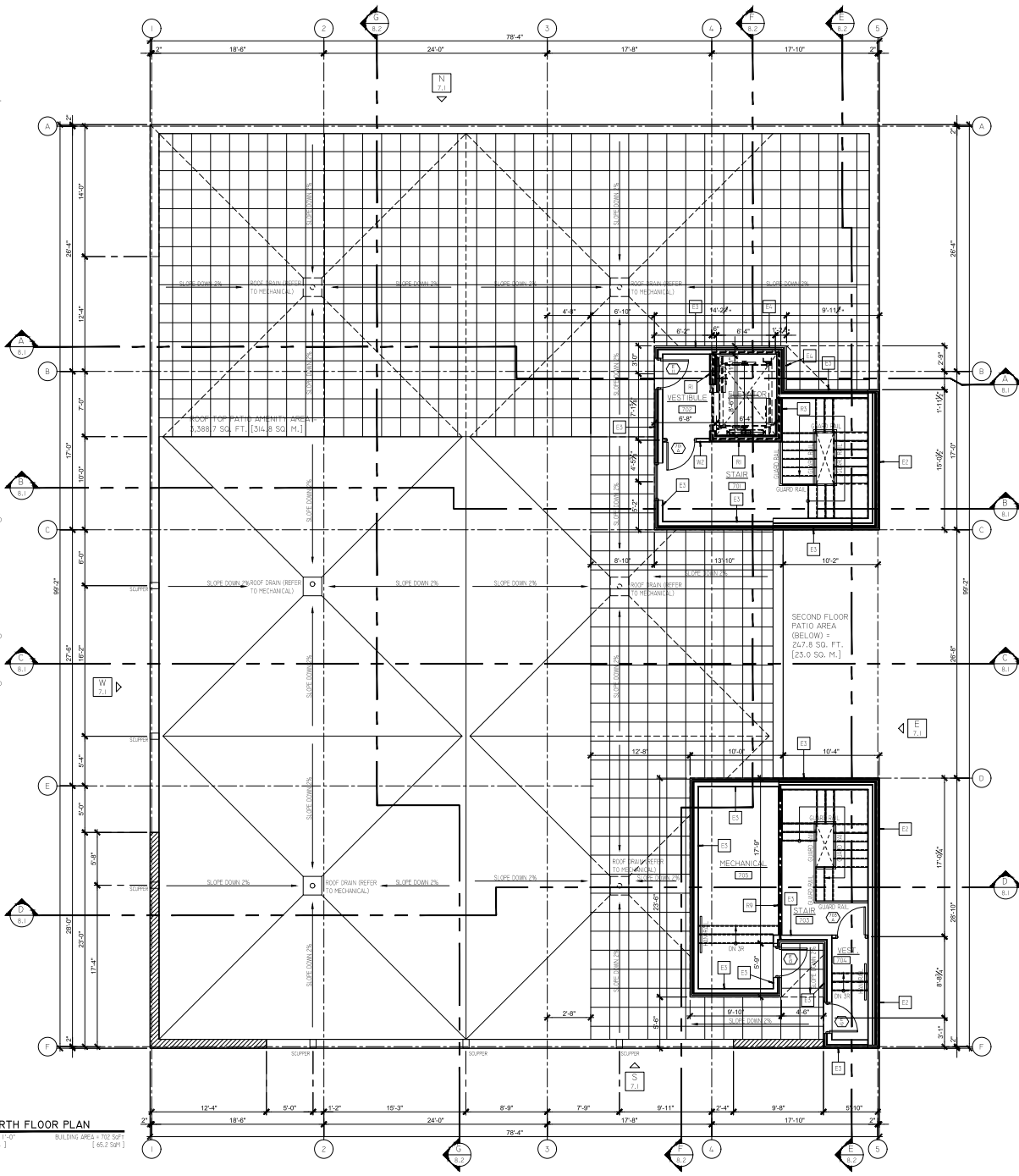
DRAWN: LCH
CHECKED: -
DATE: AUG. 23, 2024
JOB NO.: 2024-17

SHEET: **A 3.1**
4 OF 4 PAGES

GENERAL NOTES
- THIS DRAWING MUST NOT BE SCALED
- VERIFY ALL DIMENSIONS AND DATUMS
PRIOR TO COMMENCEMENT OF WORK.
- REPORT ALL ERRORS AND OMISSIONS TO
THE CONSULTANT IMMEDIATELY.
- VARIATIONS AND MODIFICATIONS ARE
NOT ALLOWED WITHOUT THE WRITTEN
PERMISSION FROM THE CONSULTANT.
THIS DRAWING IS THE EXCLUSIVE
PROPERTY OF JAMES D. ZIMMER
ARCHITECT
ANY REPRODUCTIONS WITHOUT WRITTEN
CONSENT IS STRICTLY PROHIBITED



- E2- TYPICAL NONCOMBUSTIBLE / NONCOMBUSTIBLE CLAD 1.0 HR FRR WALL WITH 1.0 HR LOAD BEARING EXTERIOR WALL CONSTRUCTION**
NRC 2020 TABLE 9.10.3.1-A-NO. WB-NO. RW-1.0 HR
- ACRYLIC STUCCO EXTERIOR EIFS SYSTEM TO ADEX SYSTEM INC. DESIGN NO. ASDWEPS 20-01E15) ADEX SYSTEMS CANULIC SSM (INTEREX APPROVAL OCTOBER 9, 2018) (DEEMED NONCOMBUSTIBLE)
2" EPS EXTERIOR NONCOMBUSTIBLE CLADDING, WOODPECKER RESISTANT ACRYLIC ADEX STUCCO FINISH AND PRIME COAT ON ADEX MESH 3" ADEX-20 ON ADEX FLAT INSULATION BOARD, INCLUDE NOT LESS THAN 1/4" DEEP DRAINAGE PATH FOR WATER THAT PENETRATES PAST THE EXTERIOR CLADDING.
ADEX SYSTEMS WATER RESISTIVE BARRIER
5/8" TYPE X GLASROC / DENGLOS SHEATHING, FIRE TAPED
2 1/2" STEEL STUDS AT 16" O.C.
2 1/2" ROCKWOOL
5/8" TYPE X GYPSUM BOARD, FIRE TAPED
1/2" PLYWOOD SHEATHING
2" X 6" WOOD STUDS, STUD SPACING REFER TO STRUCTURAL
5 1/2" FIBERGLASS INSULATION
5/8" TYPE X GYPSUM BOARD, TAPED, SANDED AND PAINTED
FRP (MAX FLAME SPREAD RATING 150) LINER TO G. HIGH ON PARKADE SIDE
- E3- TYPICAL 1.0 HR FRR LOAD BEARING EXTERIOR WALL CONSTRUCTION**
NRC 2020 TABLE 9.10.3.1-A-NO. WB-NO. RW-1.0 HR
- ACRYLIC STUCCO EXTERIOR EIFS SYSTEM
2" EPS EXTERIOR NONCOMBUSTIBLE CLADDING, WOODPECKER RESISTANT ACRYLIC STUCCO FINISH AND PRIME COAT ON MESH 3" INSULATION BOARD, INCLUDE NOT LESS THAN 1/4" DEEP DRAINAGE PATH FOR WATER THAT PENETRATES PAST THE EXTERIOR CLADDING.
- WATER RESISTIVE BARRIER
- 1/2" PLYWOOD SHEATHING
- 2" X 6" WOOD STUDS, STUD SPACING REFER TO STRUCTURAL
- 5 1/2" FIBERGLASS INSULATION
- 5/8" TYPE X GYPSUM BOARD, TAPED, SANDED AND PAINTED
- E4- TYPICAL 1.0 HR FRR LOAD BEARING EXTERIOR WALL CONSTRUCTION**
NRC 2020 TABLE 9.10.3.1-A-NO. WB-NO. RW-1.0 HR
- ACRYLIC STUCCO EXTERIOR EIFS SYSTEM
2" EPS EXTERIOR NONCOMBUSTIBLE CLADDING, WOODPECKER RESISTANT ACRYLIC STUCCO FINISH AND PRIME COAT ON MESH 3" INSULATION BOARD, INCLUDE NOT LESS THAN 1/4" DEEP DRAINAGE PATH FOR WATER THAT PENETRATES PAST THE EXTERIOR CLADDING.
- WATER RESISTIVE BARRIER
- 1/2" PLYWOOD SHEATHING
- 2" X 6" WOOD STUDS, STUD SPACING REFER TO STRUCTURAL
- 5 1/2" FIBERGLASS INSULATION
- 3/4" PLYWOOD SHEATHING
- DOUBLE LAYER OF 5/8" TYPE X GYPSUM BOARD, TAPED, SANDED AND PAINTED
- R1- ELEVATOR FRAMING (LOBBY / CORRIDOR)**
NRC 2020 TABLE 9.10.3.1-A-NO. WB-1.0 HR STC 32 (SM TO)
- ELEVATOR SIDE
- DOUBLE LAYER 5/8" TYPE X GYPSUM BOARD, TAPED, SANDED AND PAINTED EXPOSED SIDE(S) (ELEVATOR SIDE)
- 3/4" PLYWOOD SHEATHING SHAFT LINER (REFER TO STRUCTURAL)
- LOAD BEARING WALL, 2" X 6" WOOD STUDS, STUD SPACING REFER TO STRUCTURAL (WOOD BLOCKING FIRE STOPPING MAX 10 FT O.C. HORIZONTAL)
- 5/8" TYPE X GYPSUM BOARD, TAPED, SANDED AND PAINTED EXPOSED SIDE(S)
- R2- ELEVATOR FRAMING (STAIR)**
NRC 2020 TABLE 9.10.3.1-A-NO. WB-1.5 HR STC 36 (SM TO)
- ELEVATOR SIDE
- DOUBLE LAYER 5/8" TYPE X GYPSUM BOARD, TAPED, SANDED AND PAINTED EXPOSED SIDE(S)
- 3/4" PLYWOOD SHEATHING SHAFT LINER (REFER TO STRUCTURAL)
- LOAD BEARING WALL, 2" X 6" WOOD STUDS, STUD SPACING REFER TO STRUCTURAL (WOOD BLOCKING FIRE STOPPING MAX 10 FT O.C. HORIZONTAL)
- DOUBLE LAYER 5/8" TYPE X GYPSUM BOARD, TAPED, SANDED AND PAINTED EXPOSED SIDE(S)
- R3- SHAFT WALL CONSTRUCTION**
NRC 2020 TABLE 9.10.3.1-A-NO. WB-1.0 HR STC 32
- 5/8" TYPE X GYPSUM BOARD, TAPED, SANDED AND PAINTED
2" X 6" WOOD STUDS, STUD SPACING REFER TO STRUCTURAL
- DOUBLE BOTTOM PLATE AND DOUBLE TOP PLATE
- 5/8" TYPE X GYPSUM BOARD, TAPED, SANDED AND PAINTED



FOURTH FLOOR PLAN
3/10" = 1'-0"
[1 : 64]
BUILDING AREA = 120 SQFT
[65.2 SQM]

REVISIONS	DATE
1. REVISION	DATE
2. REVISION	DATE
3. REVISION	DATE
4. REVISION	DATE
5. REVISION	DATE
6. REVISION	DATE
7. REVISION	DATE
8. REVISION	DATE
9. REVISION	DATE
10. REVISION	DATE

No. REVISION DATE

JAMES ZIMMER
ARCHITECT
#104-2002 QUEBEC AVE.
SASKATCHEWAN, SASKATCHEWAN
S4N 1G1-6007

NOT FOR CONSTRUCTION

PROPOSED
COLLEGE DRIVE APARTMENTS

1202 COLLEGE DRIVE
SASKATCHEWAN, SK
ROOF PLAN

SCALE: AS NOTED
DRAWN: LCH
CHECKED: -
DATE: AUG. 23, 2024
JOB NO.: 2024-17

SHEET:
A 3.7
15 OF 17 PAGES

