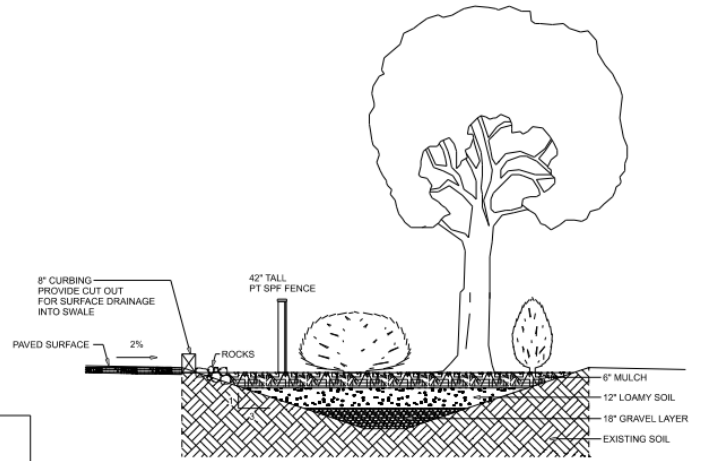


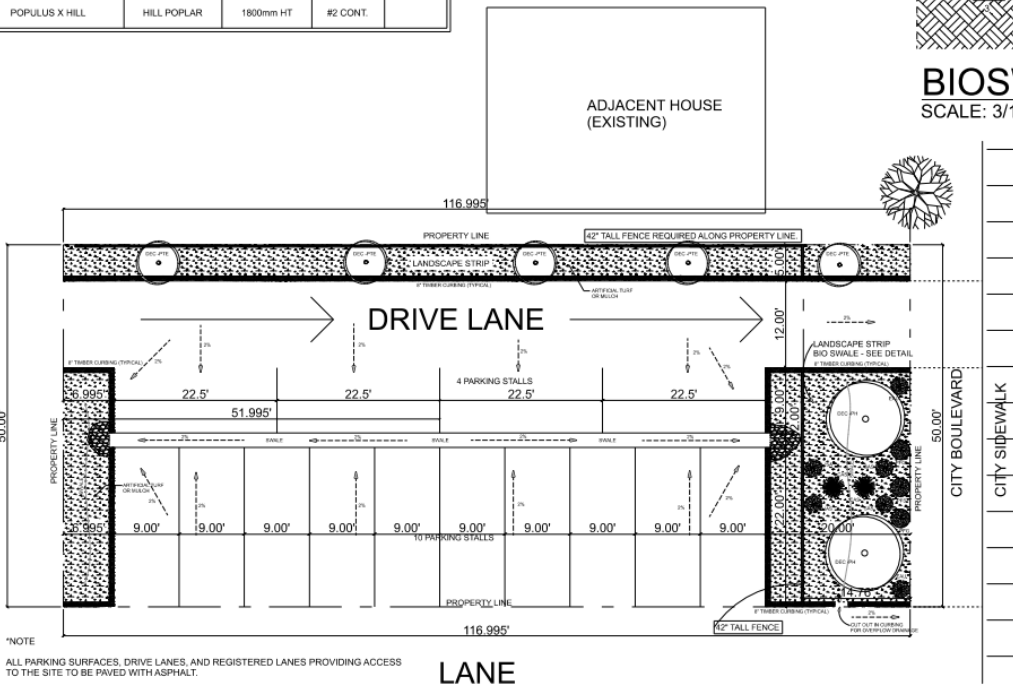
Site Plan – 1213 1<sup>st</sup> Avenue North

| SHRUBS |                                  |                        |              |           |         |
|--------|----------------------------------|------------------------|--------------|-----------|---------|
| KEY    | BOTANICAL NAME                   | COMMON NAME            | SIZE/REMARKS | CONDITION | SPACING |
| CAS    | CORNUS ALBA "SIBIRICA"           | SIBERIAN CORAL DOGWOOD | 500mm HT     | #2 CONT.  | 1.5m    |
| EAU    | EUONYMUS ALTUS                   | WINGED BURNING BUSH    | 300mm HT     | #1 CONT.  | 1.5m    |
| PFS    | POTENTILLA FRUITICOSA "SNOWBIRD" | SNOWBIRD POTENTILLA    | 400mm HT     | #2 CONT.  | 1m      |
| PFG    | POTENTILLA FRUITICOSA "GOLDSTAR" | GOLDSTAR POTENTILLA    | 400mm HT     | #2 CONT.  | 1.5m    |
| SAS    | SHEPHERDIA ARGENTA               | SILVER BUFFALO BERRY   | 400mm HT     | #2 CONT.  | 1.5m    |
| JSA    | JUNIPERUS SABINA "ARCADIA"       | ARCADIA JUNIPER        | 500mm HT     | #2 CONT.  | 1.5m    |

| TREES   |                         |               |              |           |         |
|---------|-------------------------|---------------|--------------|-----------|---------|
| KEY     | BOTANICAL NAME          | COMMON NAME   | SIZE/REMARKS | CONDITION | SPACING |
| DEC-PTE | POPULUS TRENULE ERRECTA | SWEDISH ASPEN | 1800mm HT    | #2 CONT.  |         |
| DEC-PH  | POPULUS X HILL          | HILL POPLAR   | 1800mm HT    | #2 CONT.  |         |



**BIOSWALE**  
SCALE: 3/16" = 1'-0"



\*NOTE  
ALL PARKING SURFACES, DRIVE LANES, AND REGISTERED LANES PROVIDING ACCESS TO THE SITE TO BE PAVED WITH ASPHALT.

LANE



1st AVE N

LOT: 6-7  
BLK: 3  
PLAN: G27

CIVIC ADDRESS:  
1213 1ST AVE NORTH  
SASKATOON, SK

**SITE PLAN**  
SCALE: 1" = 15'-0"