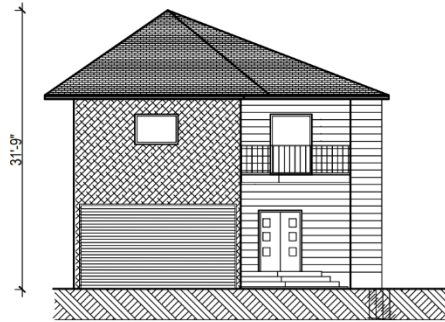
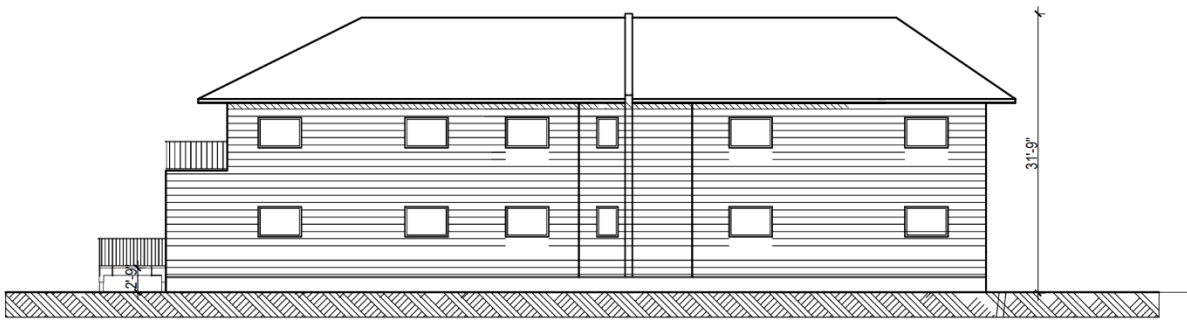


# Building Elevations – 338 taskamanwa Street



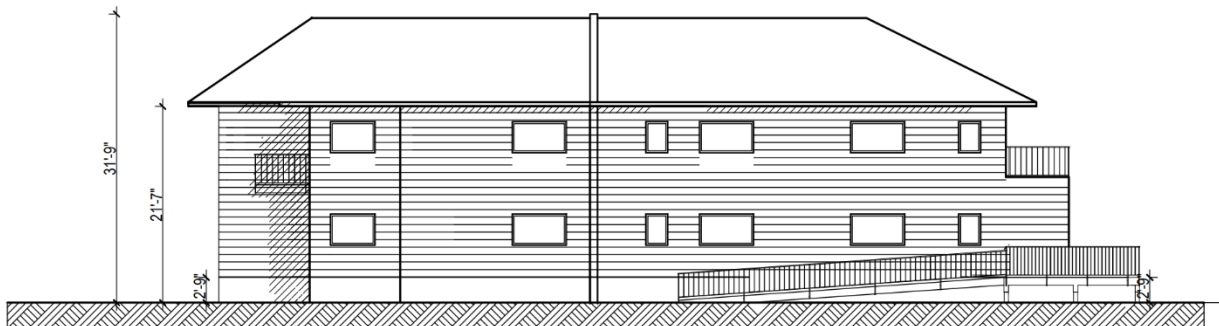
3 | E1 FRONT ELEVATION  
SCALE 3/32" = 1'-0"



4 | E2 LEFT ELEVATION  
SCALE 3/32" = 1'-0"



1 | E3 BACK ELEVATION  
SCALE 3/32" = 1'-0"



2 | E4 RIGHT ELEVATION  
SCALE 3/32" = 1'-0"