

Erratic rocks location and Materials

For ease and reference we have compiled the location, material and the update information we shared with the Public Art Board in person November 2023, regarding sites, materials, form, and method. Please find illustrations attached.

Each of the erratic rocks are made of types of plastic which has a relationship to their chosen site.

Erratic 1 (largest erratic) - Recovery Park. The blue, green and black garbage and recycling bins that have reached the end of their useful life (in their current state) destined for landfill, and currently stored onsite in their thousands.

Erratic 2 (medium erratic) - Forest Farm Park. Forest Farm played a pivotal role in the “settlement and development” of the prairie:

The Sutherland Forest Nursery Station played a vital role in the settlement and development of the Prairies from 1913 to 1966. Shipping 147 million trees over a span of 50 years, the nursery supplied the northern part of the Prairie Provinces [...] Designated as a National Historic Site.

City of Saskatoon website

The work speaks to this legacy, utilising the black and white grain bags used by farmers across the province to store grain, this black and white plastic is ubiquitous and familiar to the eye across the cultivated landscape of Saskatchewan - which today surround the erratics deposited millennia ago. This single-use plastic is destined for landfill in its millions of tons each year.

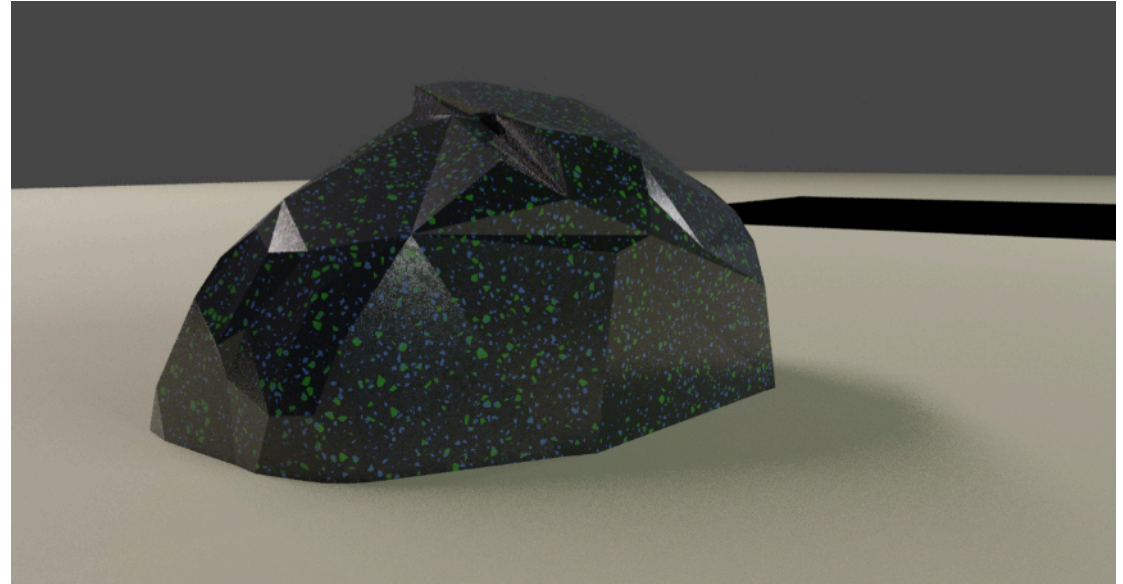
Erratic 3 (medium erratic) - Diefenbaker Park. Home to the second of the two medium sized erratic rocks, Diefenbaker Park is a place of celebration and leisure where the use of plastics bottles is commonplace and equally a place where people of all ages may encounter the work. This erratic will be made of Saskatoon’s drinking bottle tops, provided by Sarcan. Surplus to the recycling system due to the mixture and darkness of colours and mixed plastics, bottle tops have little to no recycling value and yet we produce them in their millions every year. This erratic will reflect this mix of colour - defined somewhat by the products people have consumed in Saskatoon prior to the making of the work.



NB> location is for illustration purposes only - the exact location on site at Recovery Park is in discussion with the site managers, staff and the client to allow the best view and experience and equally to align with site operations and safety.



Erratic rock Location 1
Recovery Park



NB> this illustration is provided as a studio study, and is indicative of the material only. It is not accurate in shape or colour composition, we will examine the colour ways in the first weeks of fabricating these sheets for construction.



Erratic rock Location 2
Forestry Farm Park



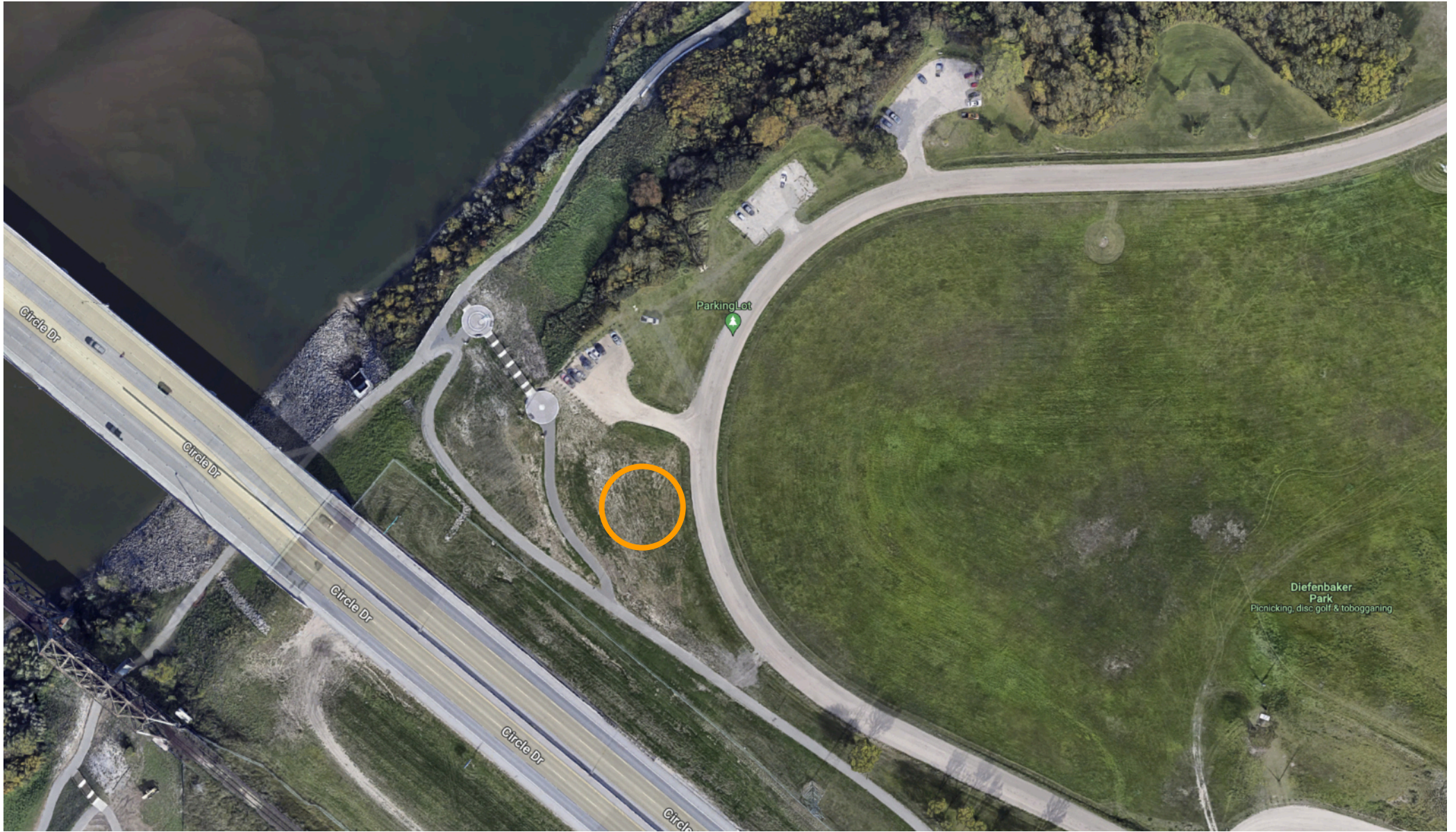
Erratic rock illustration
from in situ
Forestry Farm Park

NB> size and shape is for illustration purposes only - the exact form will be reflective of the scanned original erratics.

Sans façon November 2023



Erratic rock Location 2
Forestry Farm Park



Erratic rock Location 3
Diefenbaker Park



Illustration of Erratic
Rock in-situ
Diefenbaker Park

NB> colour rendering is for illustration purposes only - colour composition will be reflective of the raw material supplied by the people of Saskatoon.



Base material as it arrives

Erratic rock Location 3
Diefenbaker Park



Early sample sheet

Sans façon November 2023