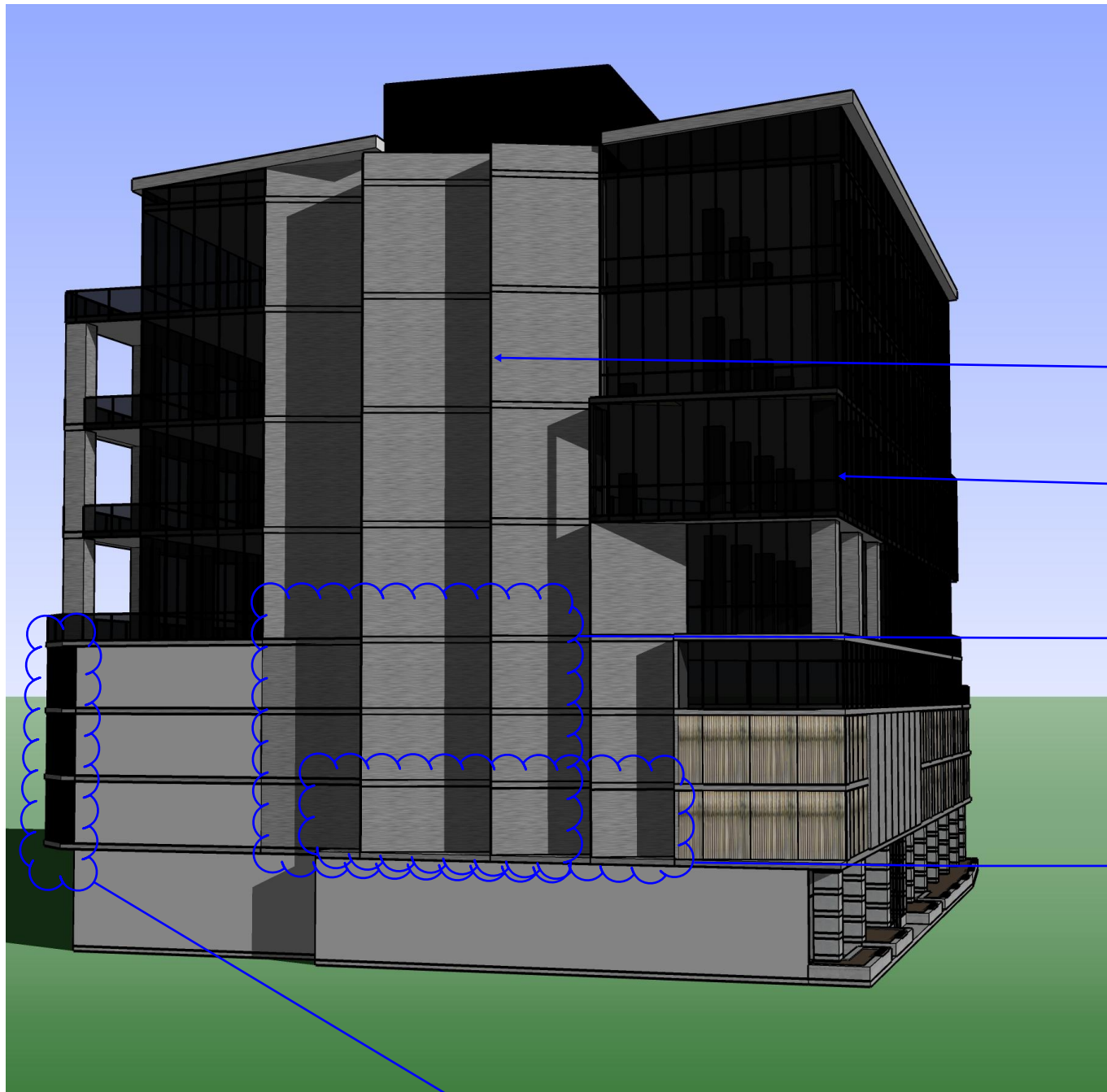


Design Changes

Modus

**ARTICULATED OR ZIG ZAGGED WALLS****PROVIDE:**

- PRIVACY
- AN ARCHITECTURAL DESIGN FEATURE: A UNIQUE WAY TO DECREASE WALL MASS AND PROVIDE A VISUALLY APPEALING WALL VERSUS A FLAT WALL.

VISION GLASS ON OFFICE LEVELS PLANNED AT AREAS OPPOSITE WINDOWS ON NEIGHBOURING BUILDING

CHANGE AFTER INITIAL PUBLIC CONSULTATION:

BUILDING ARTICULATION ADDED TO MATCH OFFICE FLOORS ABOVE AND BREAK UP WALL MASSES - WALL IN ORIGINAL APPLICATION WAS SITTING DIRECTLY ON THE SHARED PROPERTY LINE. NOW THIS WALL VARIES FROM THE PROPERTY LINE TO 1.5M INSIDE THE PROPERTY.

CHANGE AFTER INITIAL PUBLIC CONSULTATION:

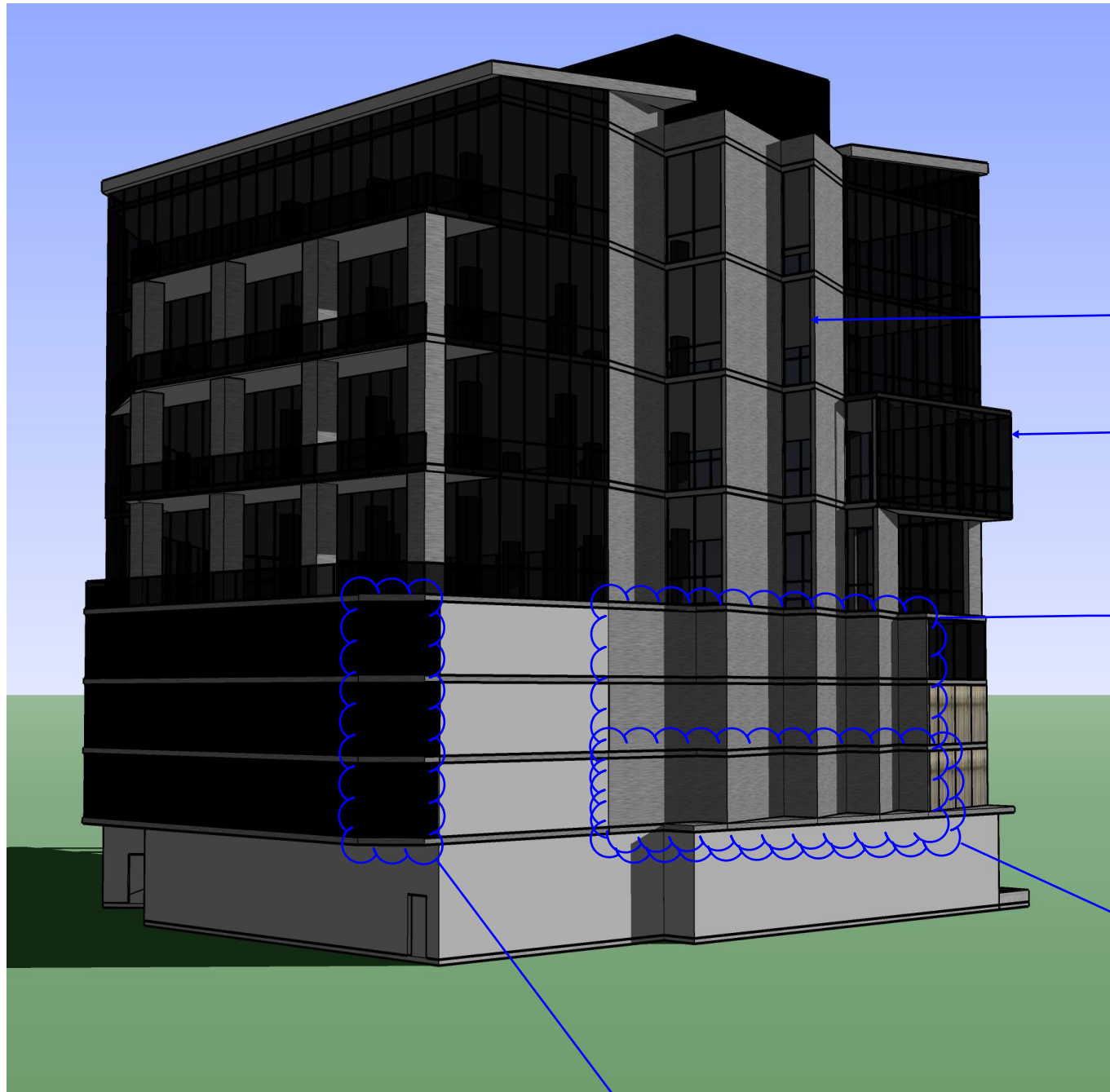
PROPOSED WALL CLIMBING VINE PLANTED ON LOW ROOFS TO CLIMB ARTICULATED WALLS. PROPOSED PLANT IS A DROPMORE SCARLET, TRUMPET HONEYSUCKLE VINE (LONICERA BROWNII), HAS LONG LASTING FLOWERS. REMARKABLY HARDY WITH TOLERANCE TO DROUGHT, HEAT.

CHANGE AFTER INITIAL PUBLIC CONSULTATION:

THE CORNER OF THE BUILDING WAS CLIPPED AT A 45 DEGREE ANGLE TO INCREASE VIEWS FROM 505 12TH ST. E AND ALIGN BUILDING MASS MORE CLOSELY WITH THE ORIGINAL ZONING BUILDING MASS

VIEW FROM NORTHWEST
BETWEEN 505 12TH ST. E & 510 UNIVERSITY DR.





ARTICULATED OR ZIG ZAGGED WALLS

PROVIDE:

- PRIVACY
- AN ARCHITECTURAL DESIGN FEATURE: A UNIQUE WAY TO DECREASE WALL MASS AND PROVIDE A VISUALLY APPEALING WALL VERSUS A FLAT WALL.

VISION GLASS ON OFFICE LEVELS PLANNED AT AREAS OPPOSITE WINDOWS ON NEIGHBOURING BUILDING

CHANGE AFTER INITIAL PUBLIC CONSULTATION;

BUILDING ARTICULATION ADDED TO MATCH OFFICE FLOORS ABOVE AND BREAK UP WALL MASSES - WALL IN ORIGINAL APPLICATION WAS SITTING DIRECTLY ON THE SHARED PROPERTY LINE. NOW THIS WALL VARIES FROM THE PROPERTY LINE TO 1.5M INSIDE THE PROPERTY.

CHANGE AFTER INITIAL PUBLIC CONSULTATION;



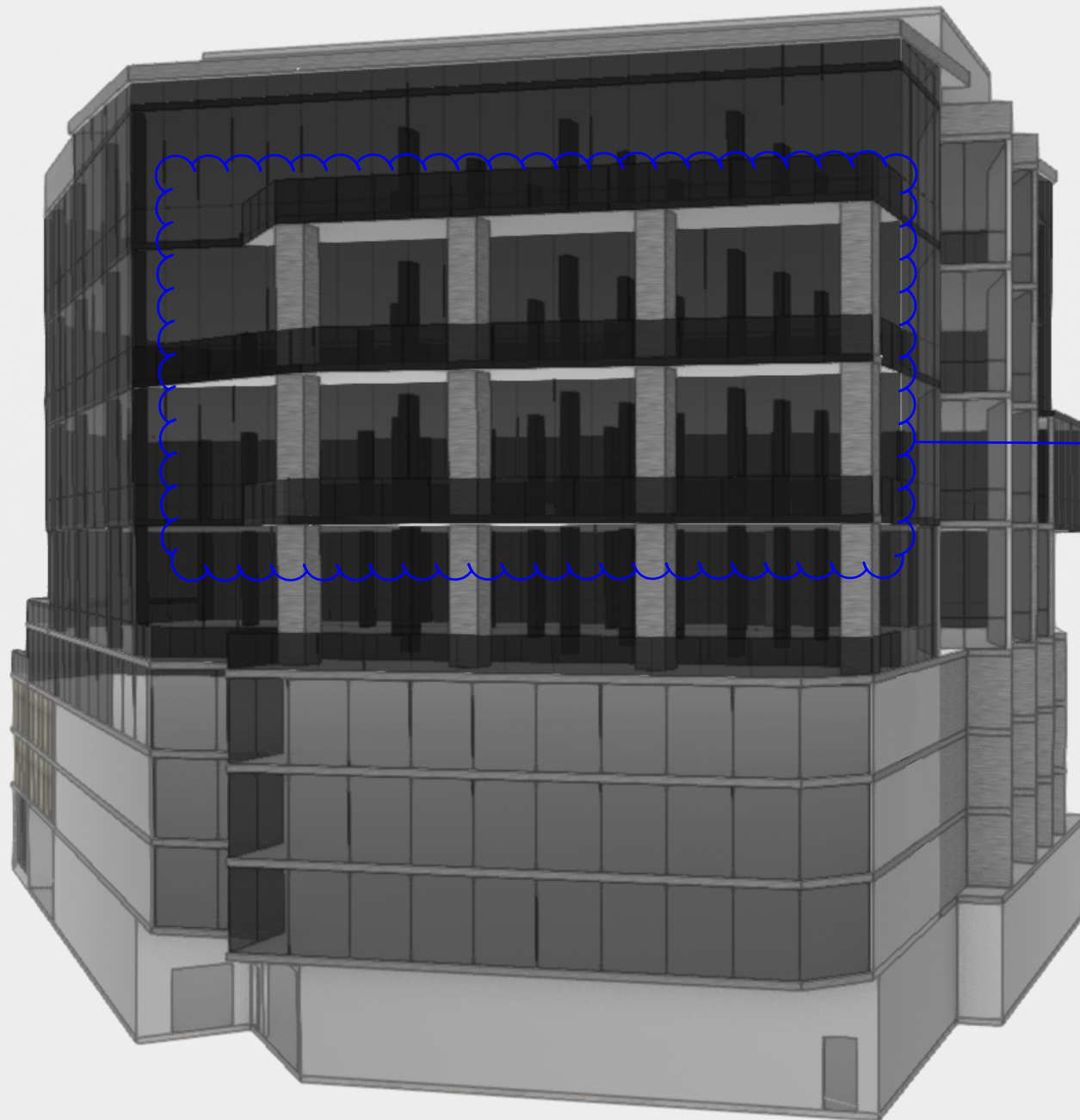
PROPOSED WALL CLIMBING VINE PLANTED ON LOW ROOFS TO CLIMB ARTICULATED WALLS. PROPOSED PLANT IS A DROPMORE SCARLET, TRUMPET HONEYSUCKLE VINE (LONICERA BROWNII), HAS LONG LASTING FLOWERS, REMARKABLY HARDY WITH TOLERANCE TO DROUGHT, HEAT.

VIEW FROM NORTHWEST
BETWEEN 505 12TH ST. E & 510 UNIVERSITY DR.

CHANGE AFTER INITIAL PUBLIC CONSULTATION;

THE CORNER OF THE BUILDING WAS CLIPPED AT A 45 DEGREE ANGLE TO INCREASE VIEWS FROM 505 12TH ST. E AND ALIGN BUILDING MASS MORE CLOSELY WITH THE ORIGINAL ZONING BUILDING MASS





CHANGE AFTER INITIAL PUBLIC CONSULTATION:
 ADDED MORE ANGLE VARIETY TO EACH PATIO TO REPLICATE
 ANGLES IN OVERALL BUILDING MASSING WHILE NOT IMPACTING
 VIEWS FROM 505 12TH ST. EAST. PATIO LINE REDUCES TOWARDS
 THE BUILDING TO MINIMIZE SOLAR SHADING TO 510
 SASKATCHEWAN CRES. EAST

VIEW FROM NORTHWEST
 BETWEEN 505 12TH ST. E & 510 UNIVERSITY DR.

