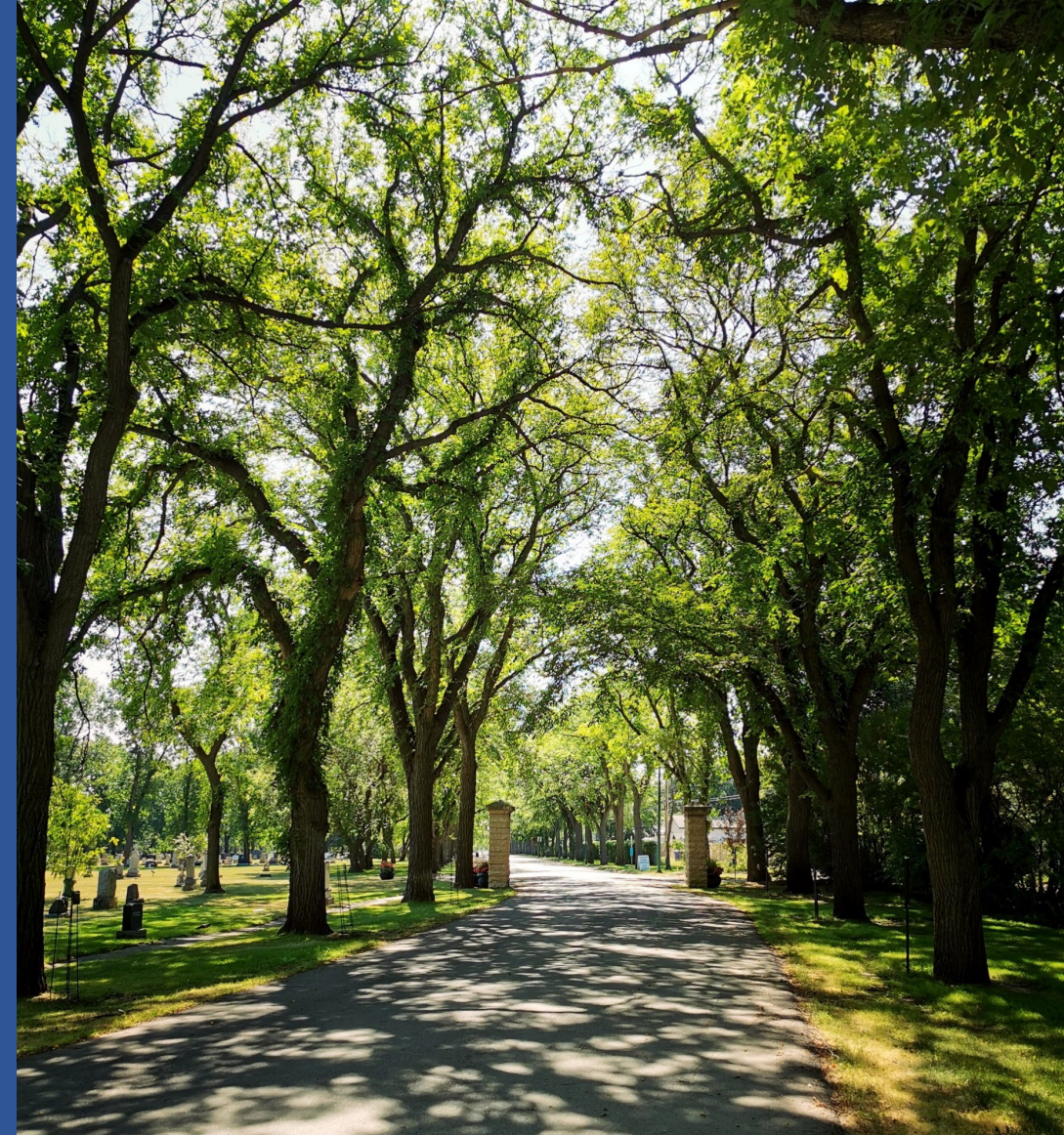


LEES
+ ASSOCIATES

Presentation to
Standing Policy
Committee on Planning,
Development and
Community Services.
April 12, 2022



City of
Saskatoon



Cemetery Master Plan

Woodlawn Cemetery and Nutana Pioneer Cemetery

Woodlawn Cemetery is the City's only active cemetery.

Nutana Pioneer Cemetery is closed and not suitable for re-opening.

- Retain and enhance as a cultural landscape to commemorate local heritage and provide a place for passive recreation and quiet reflection.

Woodlawn Cemetery

Undeveloped
burial areas

Kelsey-Woodlawn
Neighbourhood

Main Entrance



The Need for the Cemetery Master Plan

The **City's population** is set to **grow** by 60% to 450,000 over the next 25 years,

An increasingly diverse community and increasing demand on the cemetery.

Woodlawn Cemetery is **running out of developed burial inventory**. In 2020, there were:

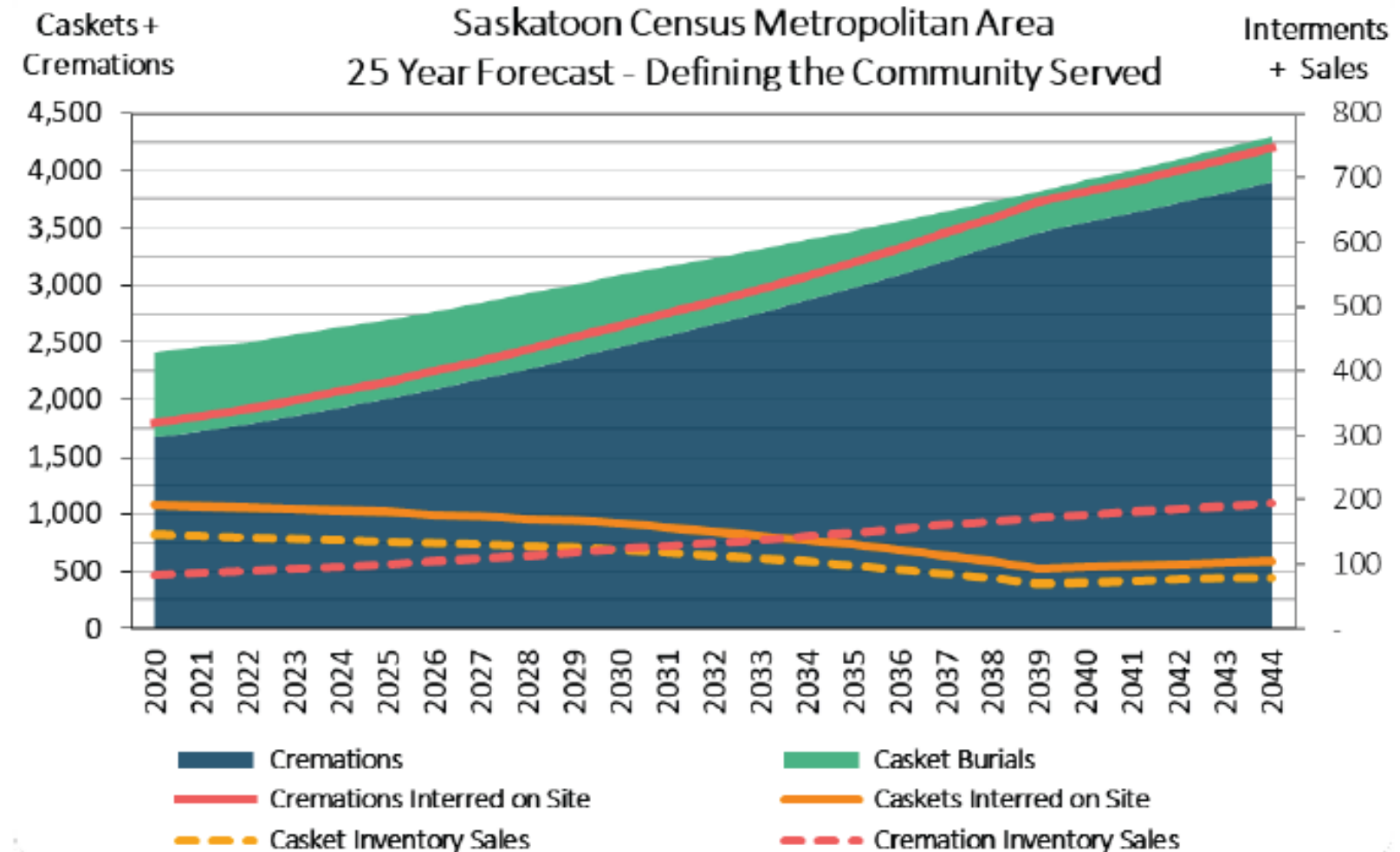
- 2 years of traditional in-ground burial;
- 2 years of in ground cremation lots;
- 2 years of columbaria (cremation) niches;

Before Woodlawn Cemetery runs out of graves for sale in about 25 years, **a new cemetery will be required** to serve the needs of the community for the next 125-150 years.

Key Findings- Woodlawn Cemetery

Burial Capacity:

- 25 years of full body in-ground burial lots to sell.
- 60 years of cremation burial options.

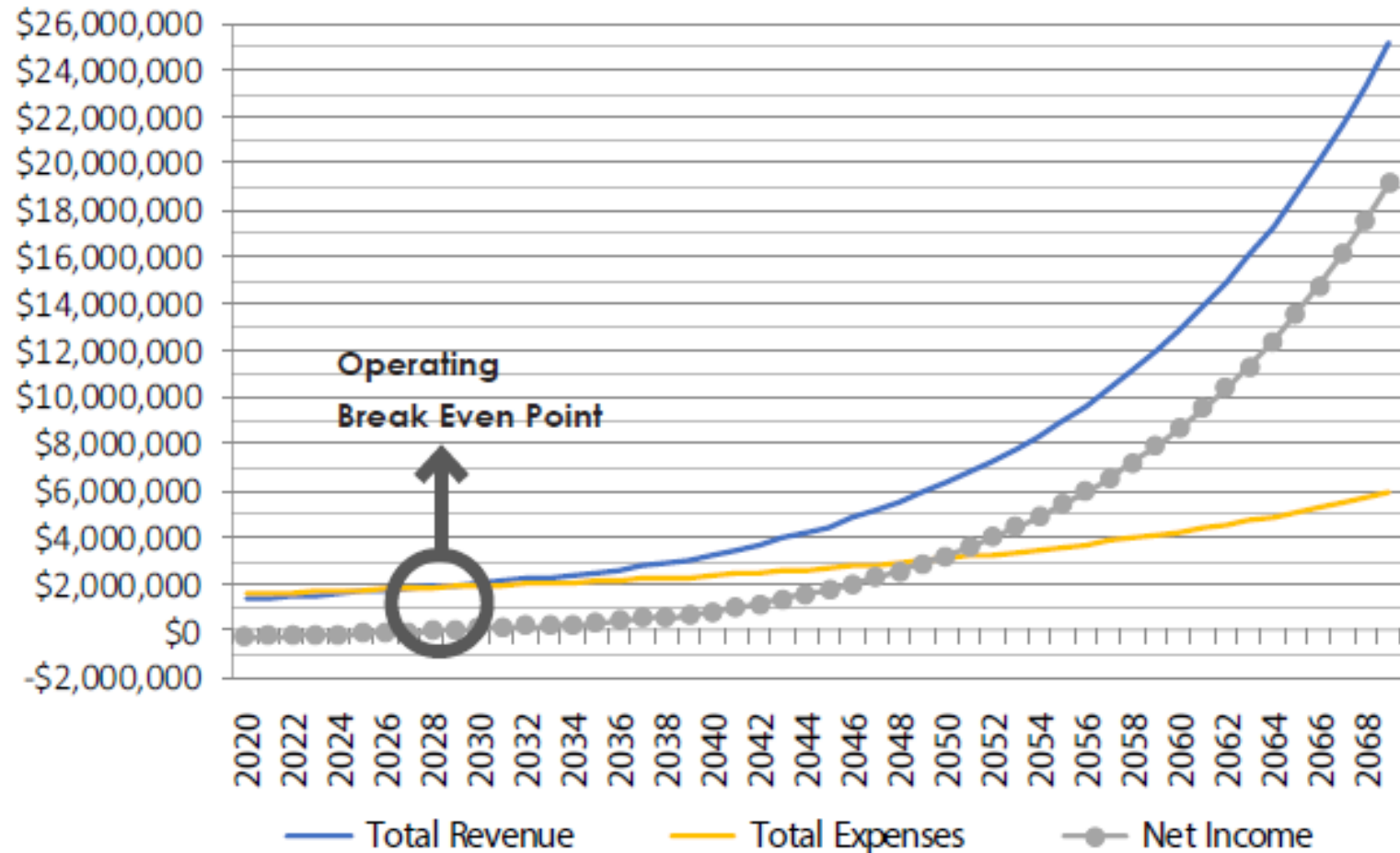


Key Findings- Woodlawn Cemetery

Financial Plan:

- 2015-2019: \$170,000 per year in tax dollar support.
- Break-even point expected in 6 years.

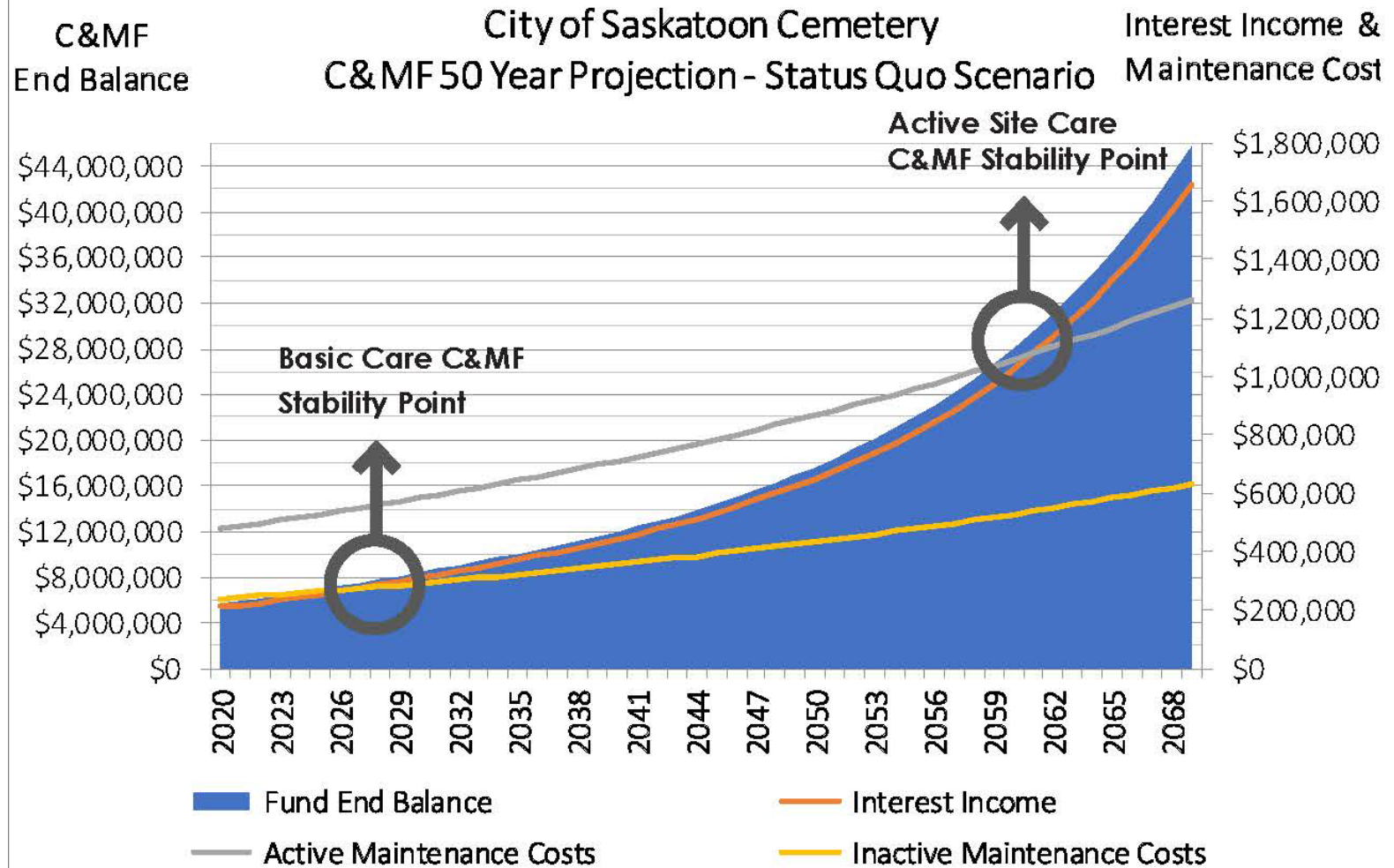
City of Saskatoon Cemetery - 490 + 491
Operations Financial Forecast - Status Quo Scenario



Key Findings- Woodlawn Cemetery

Care and Maintenance Fund

- Basic site care is 90% funded.
- Could be 100% funded in next 6 years.



Key Findings- Woodlawn Cemetery

Cemetery Operations:

- Current Staffing levels and equipment are adequate for site care and maintenance, and cemetery administration services.

Cemetery Infrastructure:

- The tree canopy is the cemetery's major landscape asset and needs protecting through a tree management strategy.
- The irrigation system is old and needs replacing

Recommendations: Woodlawn Cemetery Concept Master Plan

Develop Northern
burial areas in phases.

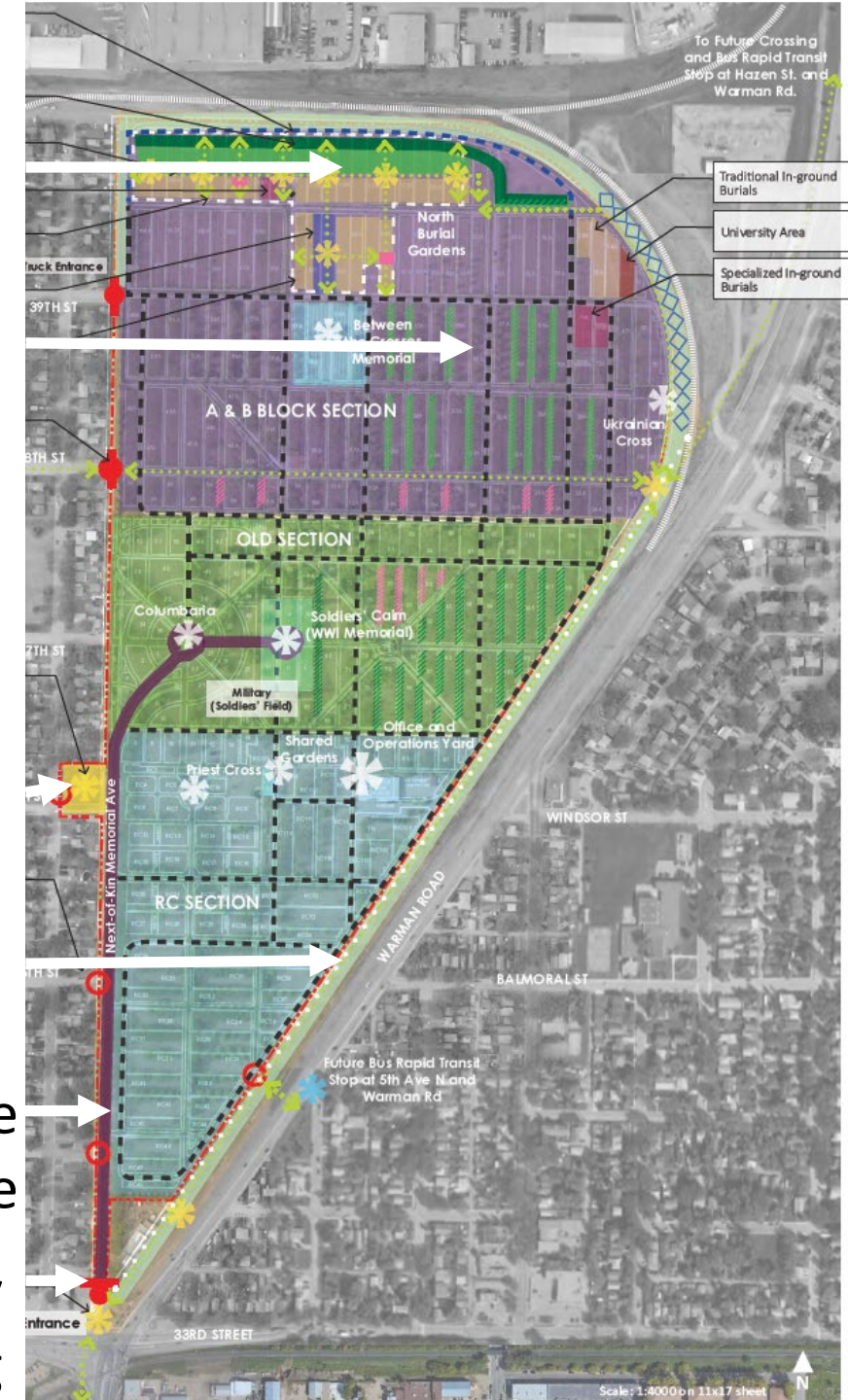
Infill unused paths
with new burial.

Develop west cremation
garden in phases.

Enhance perimeter
with tree buffer.

Protect and enhance
Next of Kin Memorial Ave

Improve main entry
experience + wayfinding



Recommendations

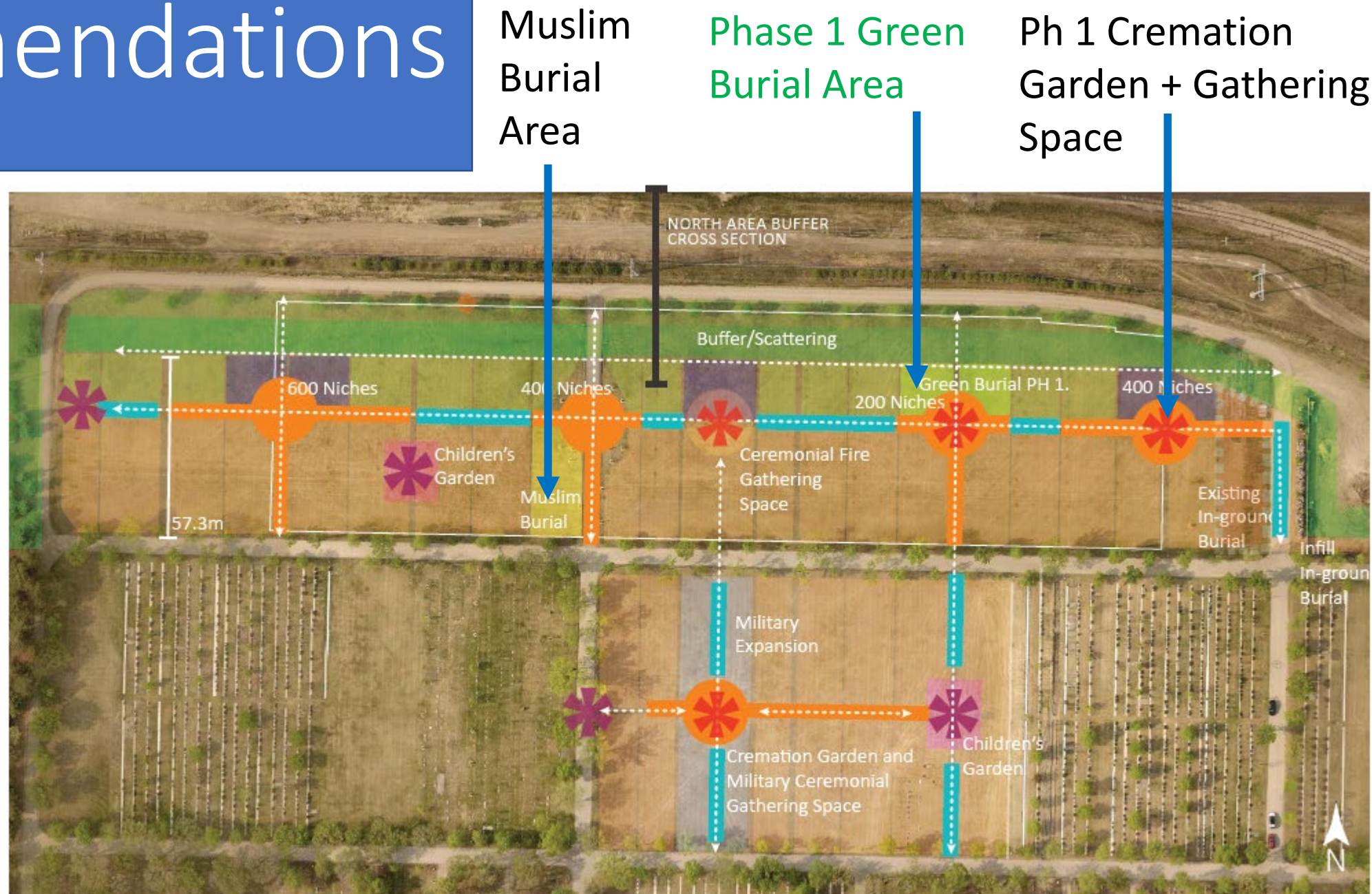
Phased Priorities:

Begin implementing high priority recommendations in 2022.

- Create a Cemetery Development Fund to pay for implementation of future phases of burial expansion and future land acquisition.
- Begin “Burial Expansion Phase 1” to include Green Burial.
- Implement a range of greener/ more sustainable operating practices:
 - Green Burial;
 - Efficient irrigation system
 - Cease use of fiberglass grave covers etc.

Increase Burial Capacity

in the northern areas of the cemetery with a range of interment and memorialization options



Recommendations

- Develop a Cremation Garden Precinct in phases on the site of the former administration building.
- Approx. 1000 niches = 23 years columbaria (cremation) niche capacity



Recommendations

Cemetery Products, Service and Operations Review

Consultation with community representatives informed key recommendations

including:

- Find ways to Implement Truth and Reconciliation Commission Calls to Action #57 and #79 to celebrate culture, heritage and diversity by developing more inclusive cemetery service.
- As part of long-term relationship building, create a forum that includes indigenous, ethnic and faith-based representatives for ongoing collaboration on a range of projects that will come forward from this master plan.

Recommendations

Future Cemetery Lands

Begin the search for suitable land now:

- min 30 acres to provide 100+ years capacity.
- Acquire land by 2025
- Design, construct and open the first areas of the new cemetery by 2040

Thank You

Are there any Questions?

