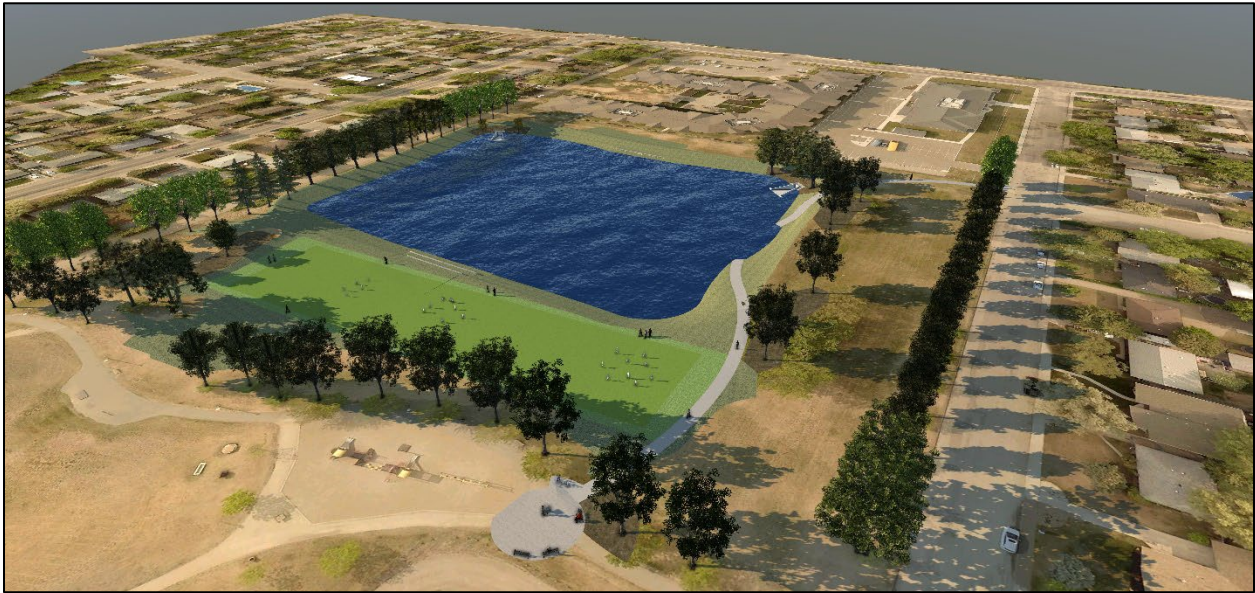


Churchill Park Dry Pond Construction, Final Design Renderings & Public Engagement Summary

Construction Photos



Final Design Renderings



Churchill Park Dry Storm Pond Project Update

BACKGROUND

The City of Saskatoon is upgrading the storm water system to reduce the flood risk for residential properties near the intersections of Ruth Street at Cairns and York Avenues, and Bute Street at Munroe and Albert Avenues.

When intense rainfall occurs, storm water will drain into a newly constructed dry storm pond in the nearby Churchill Park rather than flood intersections. It will then slowly drain into the storm water system and to the river.

SCHEDULE

Construction of the dry storm pond at Churchill Park begins with excavation in early 2022. The remaining phases (storm sewer pipes, outlet-inlet structures and landscape construction) will be scheduled between May and November 2022.

PROJECT FUNDING

The Churchill Park dry storm pond is the second of nine projects that will address flooding at Saskatoon's most flood-prone areas through the nine-year \$54 million Flood Control Strategy. The Government of Canada is contributing 40% of the eligible construction costs up to a maximum of \$21.6 million.

ENGAGEMENT & COMMUNICATIONS

Learn more about the Churchill Park Dry Storm Pond at saskatoon.ca/engage. Properties adjacent to the park will receive a construction notice with important information prior to the excavation work planned for early 2022.

In the meantime, we ask that residents sign up to receive project updates. To sign up, please email us at constructionupdates@saskatoon.ca from your preferred email address with "Churchill Park" as the subject to provide your name and address.

DESIGN

Feedback Included

Your feedback during the virtual information sessions was incorporated in the design of the storm pond:

- A new pathway will be added on the east side of the dry storm pond that will connect with the existing pathway.
- The dry pond will have the capacity to store storm water volume for a 1-in-10-year rain event.
- The cross-country ski trail system within the park can include the dry pond area once the project is complete.
- Existing trees on the east perimeter of the dry storm pond will be maintained and additional trees will be planted in the park. However, trees will not be added along the north side of the pond, maintaining the park view for residents of the nearby condominium.
- The multi-purpose fields will be incorporated into the design.