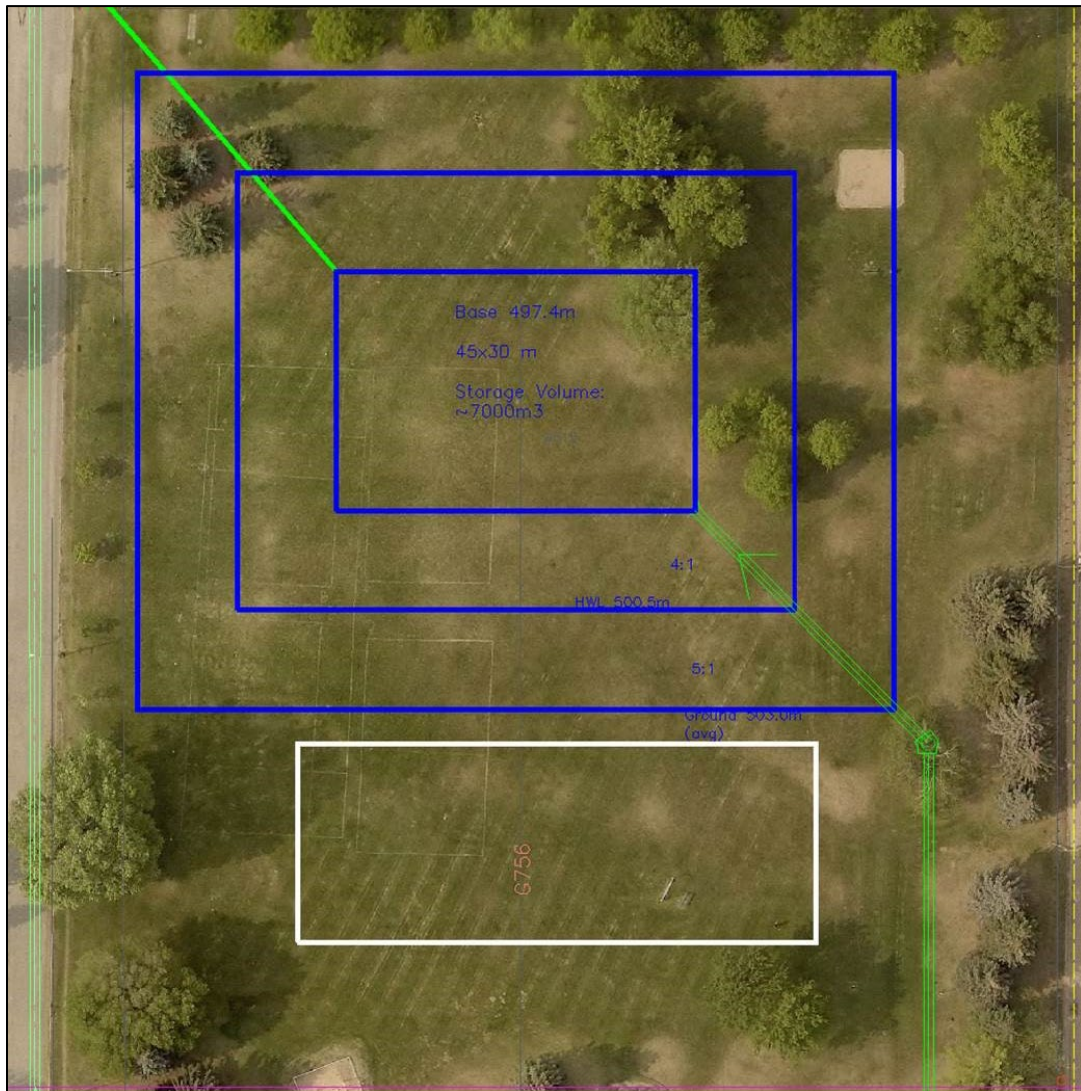


Weaver Park Dry Pond Feasibility Assessment

Design Plan



Technical Feasibility

The following design parameters will be included in the Weaver Park dry pond and storm sewer infrastructure project:

- A 1,200 mm storm sewer will be constructed from the intersections of Dufferin Avenue/Cascade Street and Dufferin Avenue/Bute Street to the dry pond in the north half of Weaver Park. The storm sewer inlet will be installed in the southeast corner of the pond.
- The dry pond will drain through a 450 mm storm sewer outlet in the northwest corner of the dry pond and connect to the storm sewer system at the intersection of Eastlake Avenue/Hilliard Street E. The pond floor will be graded to transport storm water overland and drain to the northwest corner outlet.

- Approximately 30,000 cubic meters of common material will be excavated from Weaver Park for dry pond construction. Approximately 7,000 cubic meters of storm water storage will be constructed (~1-in-10 year design capacity).
- The dry pond will be designed to drain in 24 hours after a significant rain event.
- A geotechnical ground investigation is planned to consider groundwater levels in the storm pond design.
- A 65 m by 25 m recreation field aligned east-west between the playground area and dry pond will be provided as requested by the Recreation and Community Development Department. The dry storm pond will not have a formal recreational field installed on the pond floor. The dry pond will be used as an informal recreation and green space.
- Approximately 26 trees may be removed as part of this project, including ten trees which will likely be removed to accommodate the recreational field and dry pond layout in the north half of Weaver Park (based on discussions between Civic Departments). Replacement trees will be planted as part of the project.

Note: the design parameters identified above may change through the detailed design phase of the project.

Cost Estimate

Description	Estimated Costs
Storm sewer infrastructure upgrades including road restoration	\$ 5,875,924
Dry pond construction	\$ 839,478
Landscape construction including irrigation and sub-drainage	\$ 735,000
Contingency	\$ 742,538
Associated taxes including rebates	\$ 491,576
Total Eligible Costs:	\$ 8,684,517
Internal ineligible costs (design, project management, engagement, etc.)	\$ 500,000
Total Ineligible Costs:	\$ 500,000
Total Project Costs:	\$ 9,184,517