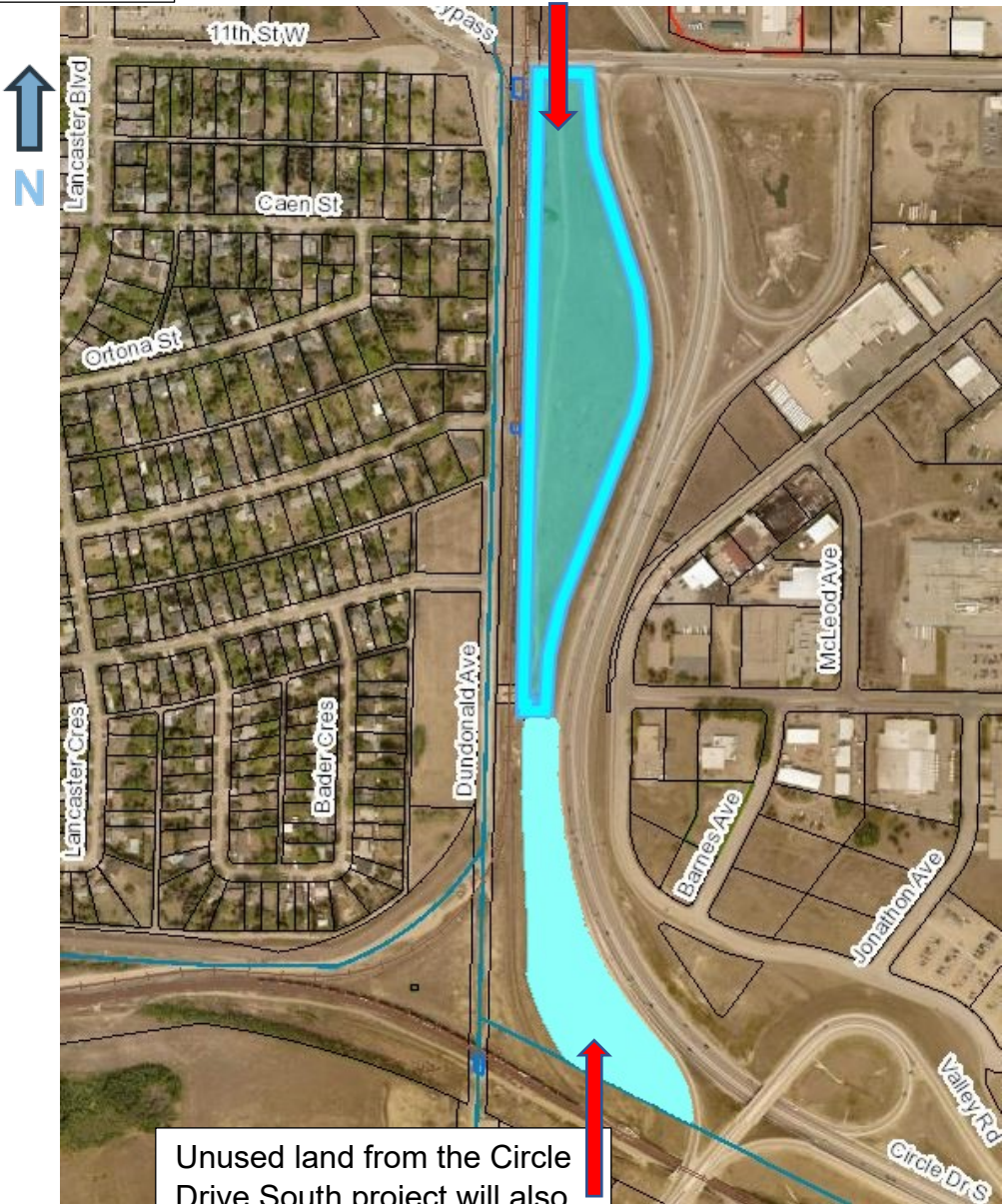


# Dundonald Avenue Solar Farm Layout and Visualizations

## Location

The solar site is to the east of Montgomery Place in southwest Saskatoon

Parcel M is a 14 acre site set aside for solar power



Unused land from the Circle Drive South project will also be utilized

Overhead Visualization



Looking south from 11<sup>th</sup> Street West with Circle Drive on the left. The area in orange foliage shows the area of the solar farm.

Land reserved for future roadways





Ground Level Visualizations



Dundonald Avenue  
looking east



On ramp to Circle  
Drive looking south

Ground Level Visualizations (continued)



Looking north from ditch of Circle Drive



Looking northwest from Valley Road overpass





Looking north from  
Valley Road overpass