

MAP 1: LAND USE CONCEPT PLAN

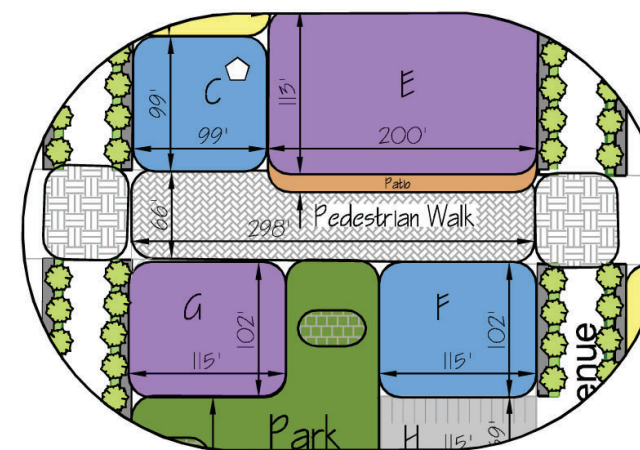
South Caswell Concept Plan



Scale : NTS

Legend:

- A. Mixed Use  
- ± 12,000 f<sup>2</sup>
  - B. Townhouses  
- ± 15,500 f<sup>2</sup>
  - C. Adaptive Re-Use including Community Space  
- ± 9,500 f<sup>2</sup>  
- Potential Heritage Building
  - D. Medium Density Residential  
- ± 26,000 f<sup>2</sup>
  - E. Mixed-Use  
- ± 24,000 f<sup>2</sup>
  - F. Adaptive Re-Use including Community Space  
- ± 22,000 f<sup>2</sup>
  - G. Mixed-Use  
- ± 11,400 f<sup>2</sup>
  - H. Public Parking  
- 28 Stalls
  - I. Existing Commercial  
- ± 18,000 f<sup>2</sup>
  - J. Medium Density Residential  
- ± 33,000 f<sup>2</sup>
  - K. Town Houses  
- ± 20,000 f<sup>2</sup>
  - L. Park  
- ± 8,000 f<sup>2</sup>
- Pedestrian Crossing
  - Green Buffer
  - Park Space
  - Existing Commercial
  - Adaptive Re-Use including Community Space
  - Town Houses
  - Mixed Use
  - Medium Density Housing
  - Parking
  - Sidewalk
  - Intersection Improvement
  - Pedestrian Walkway
  - Hardsurfaced Park Area
  - Proposed Heritage Site
  - Existing Heritage Site
  - Railway Tracks
  - Rails with Trails
  - Study Area



Detail  
"Community Focal Point"