

Adam Pollock

Presenting to you today of behalf of the
Pleasant Hill Community Association,

And

With the support of Residents from King George,
Riversdale, and the West Industrial Area.

Residents are Excited...

King George

Pleasant Hill

Riversdale

West Industrial Area

All see this new school as an opportunity to better our communities. Its Location will dictate how much of a positive impact this project will have.

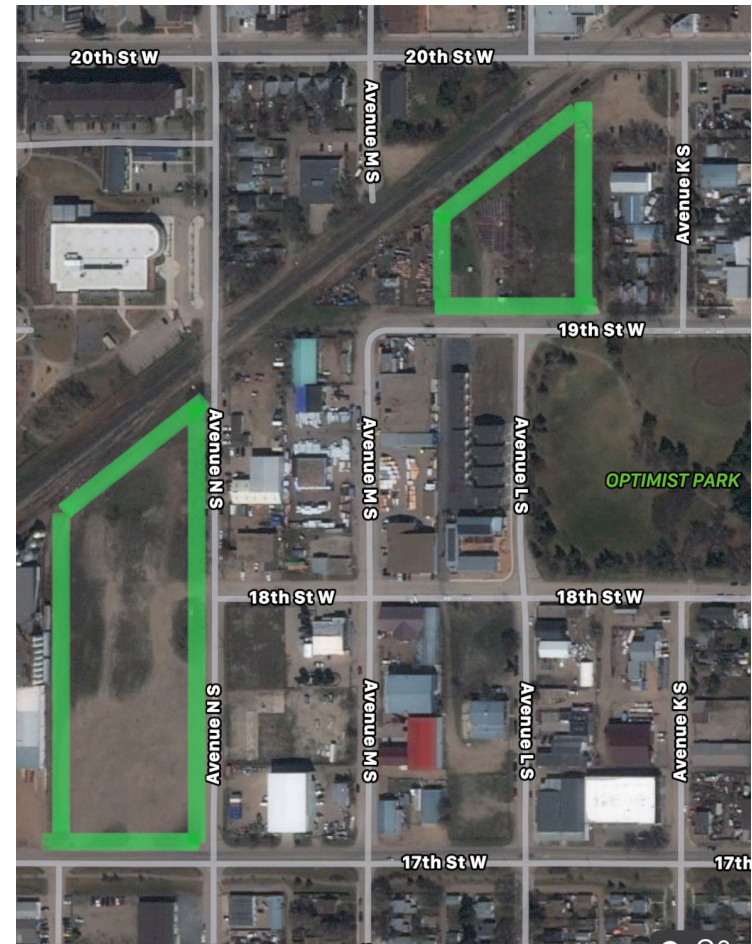
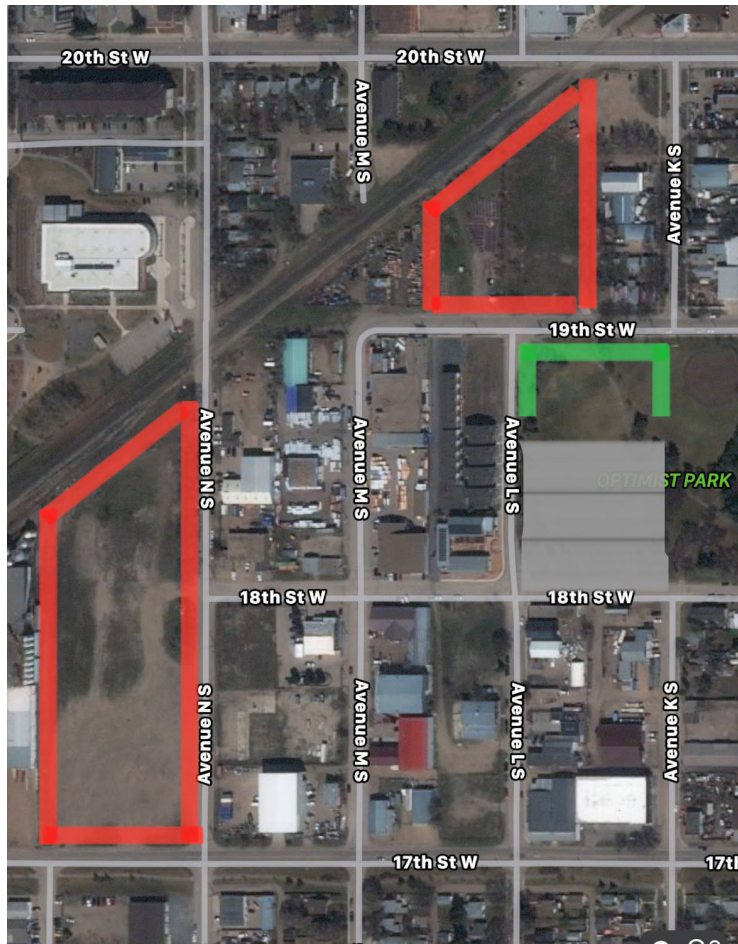
Residents Location Hopes

- Will be the most central to the communities being effected
- WILL NOT REDUCE the limited EXISTING green spaces in our communities
- WILL REDUCE undesirable brown fields and facilitate transition of non-compatible land uses.

Today: Optimist Park

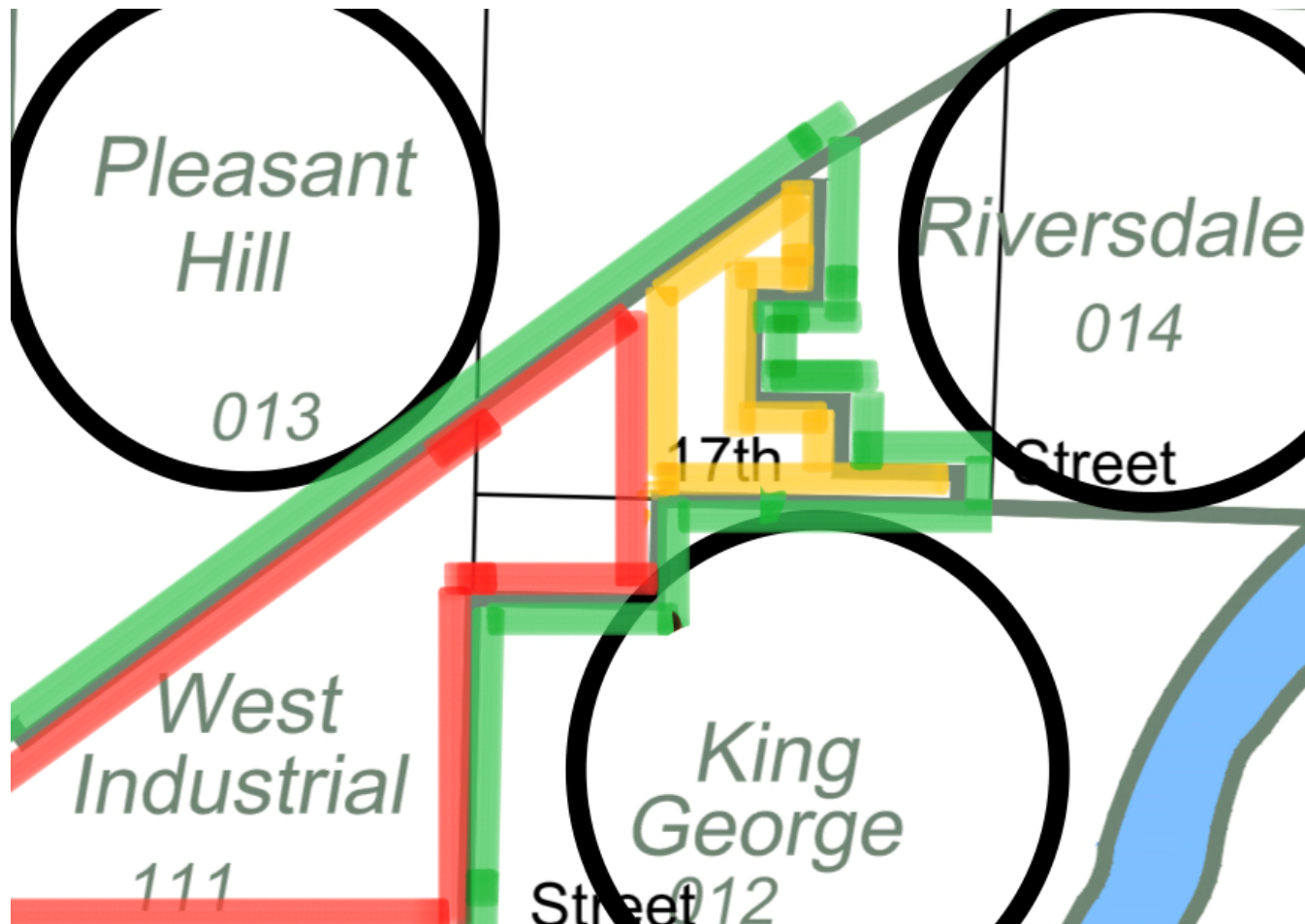
- This option will REDUCE GREEN space in our community
- This option will NOT REDUCE undesirable brown fields in the heart of our new school community.

Don't Reduce Existing Green Space... Turn Brownfields into Green Space.

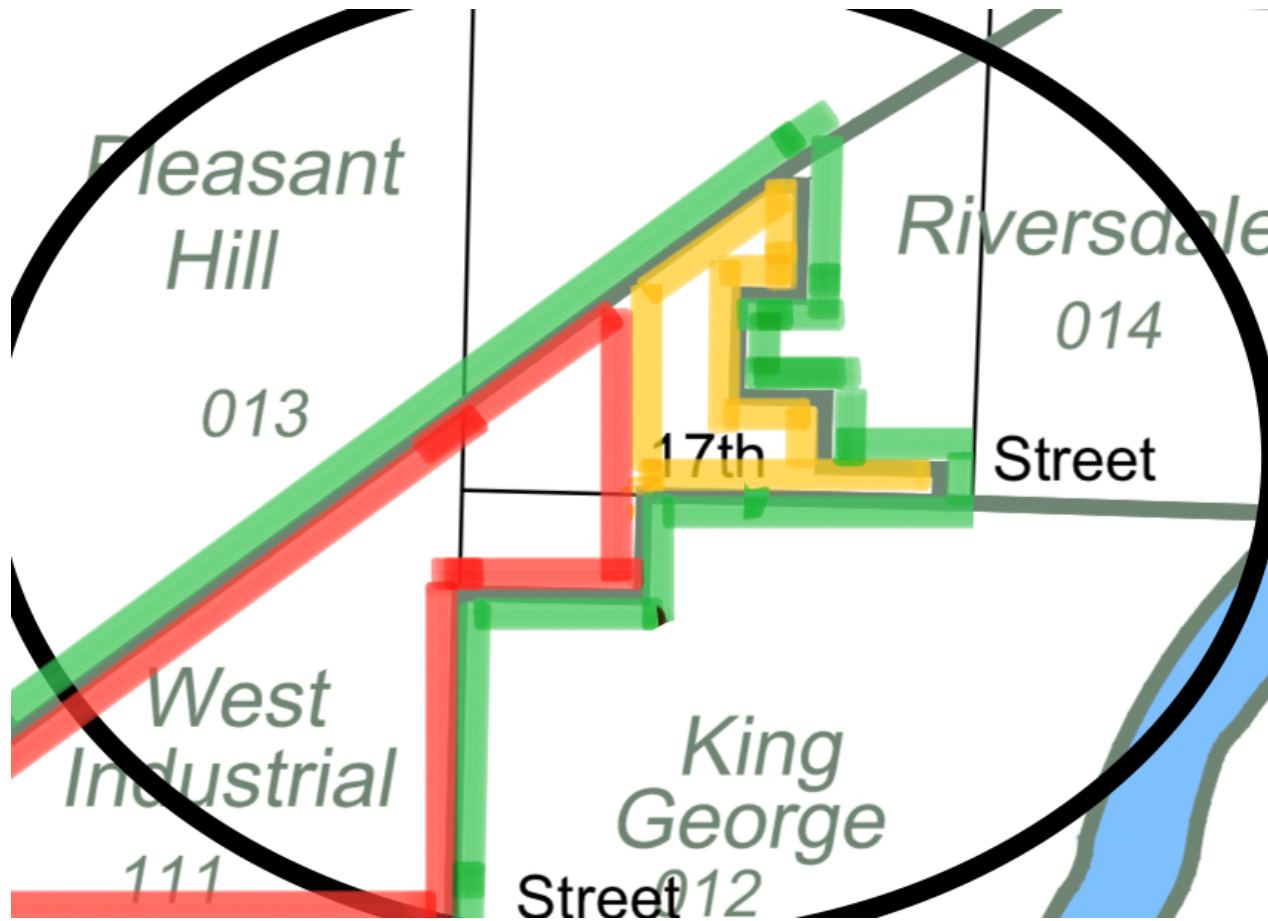


What is this New School Community?

From 4 communities...



To 1 School Community



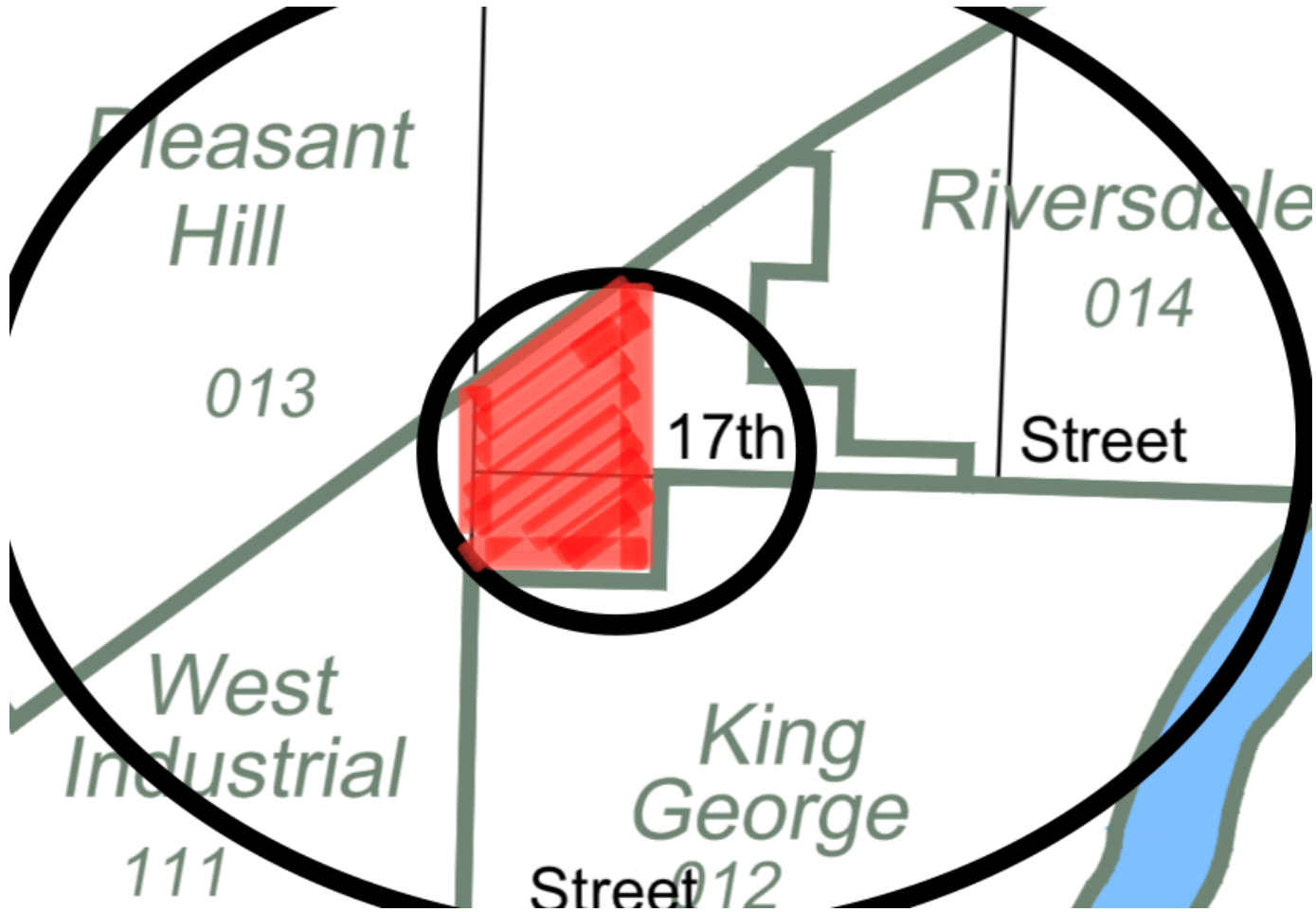
This requires Bigger Picture Planning

- Transportation Issues surrounding School Routes and corridors that are safe for children to access their new SINGLE school community must be addressed.
- It isn't just a new school... it is a new community.

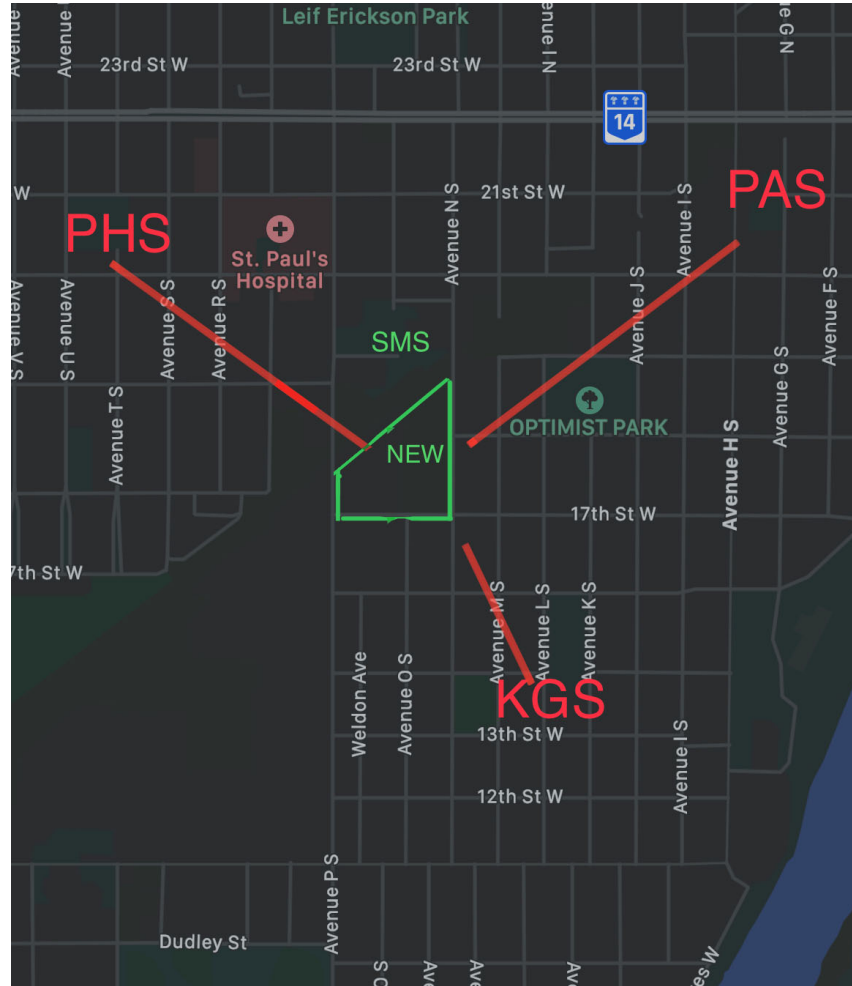
The heart of our new school community...



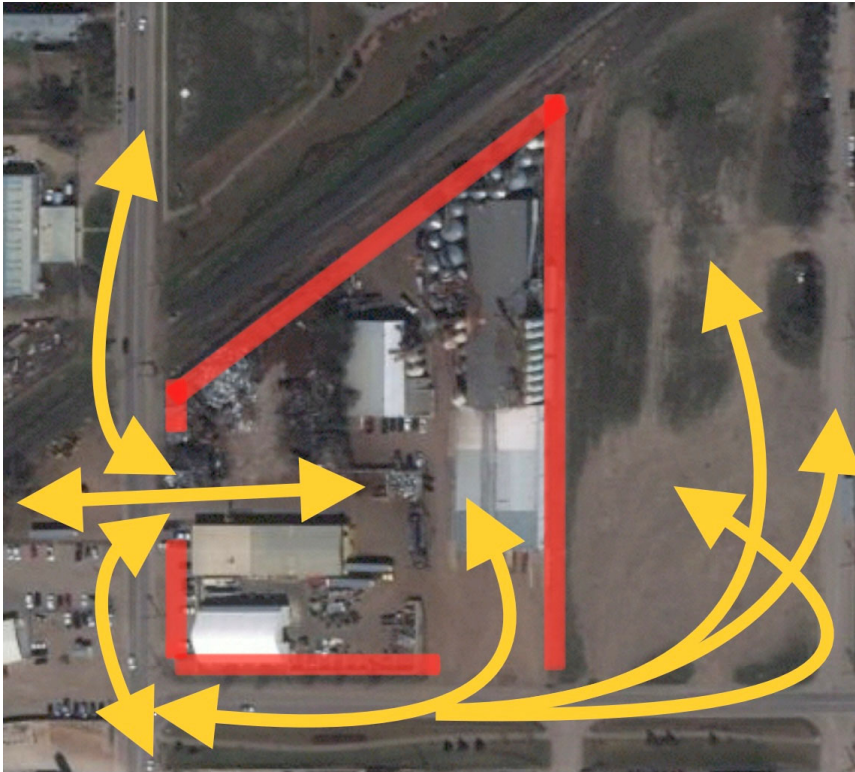
is an Industrial Hazard!



Most Central Location...



Hazards and Semi Trucks school route?



Semis, No Sidewalks



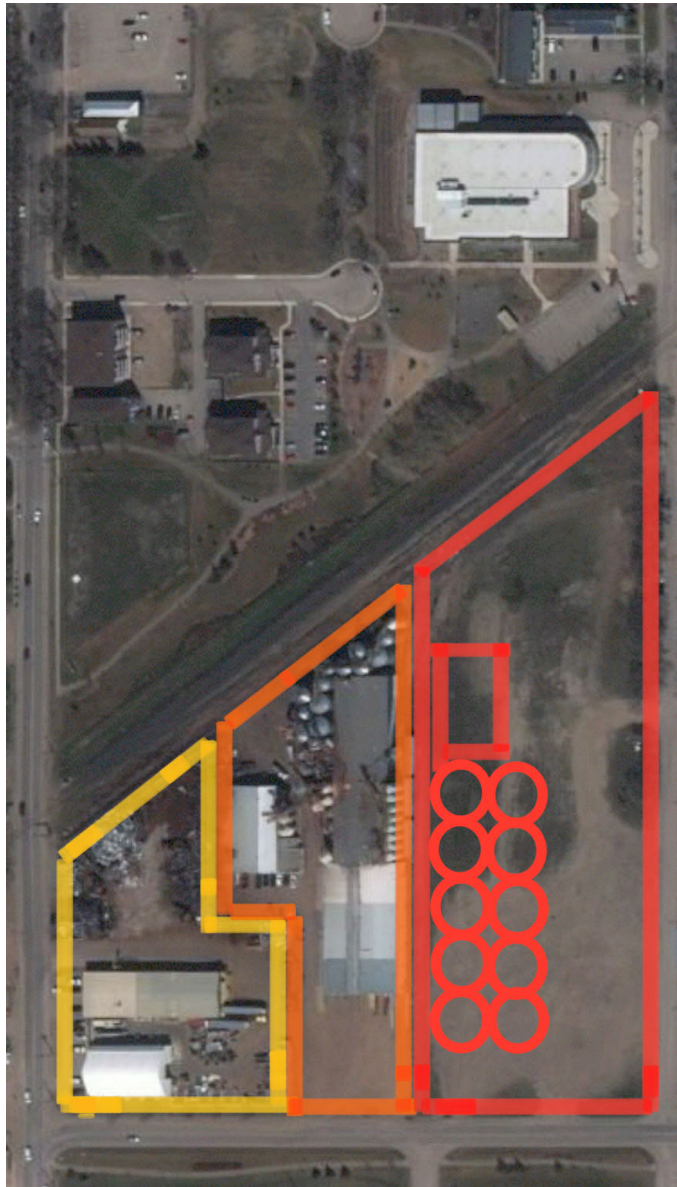
Open Hazards in New School Community Corridor



Parcel P: Heavy Industrial Hazards



Transitional principles approved since 2008



An Ideal School Location CAN...

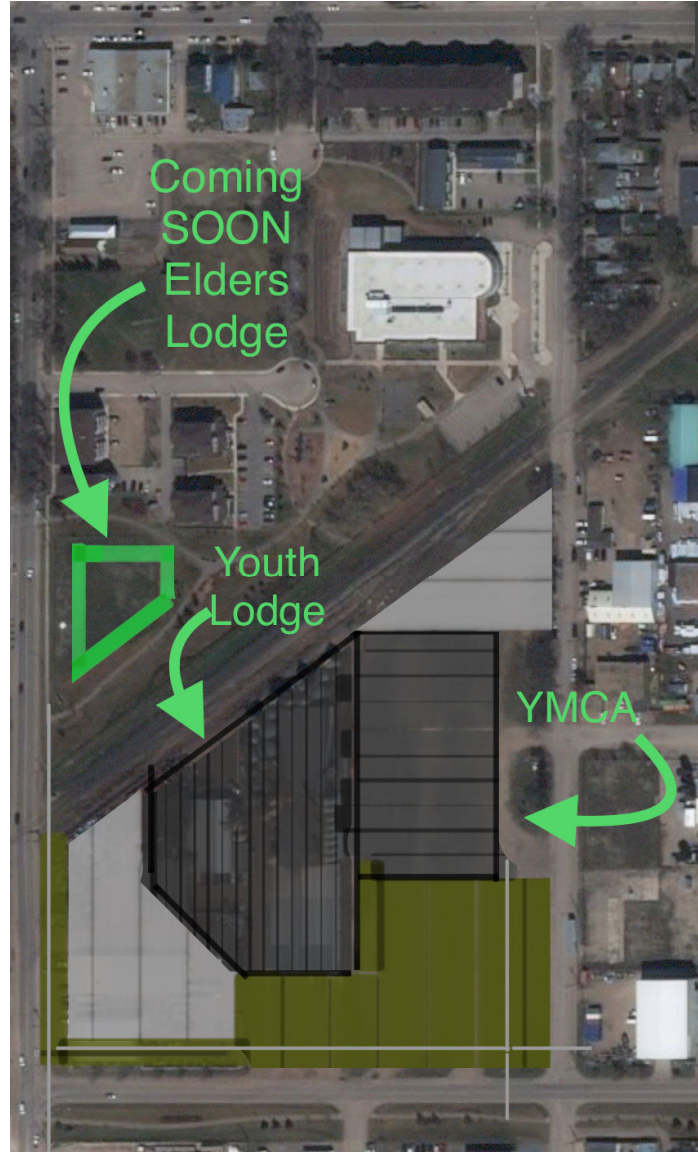
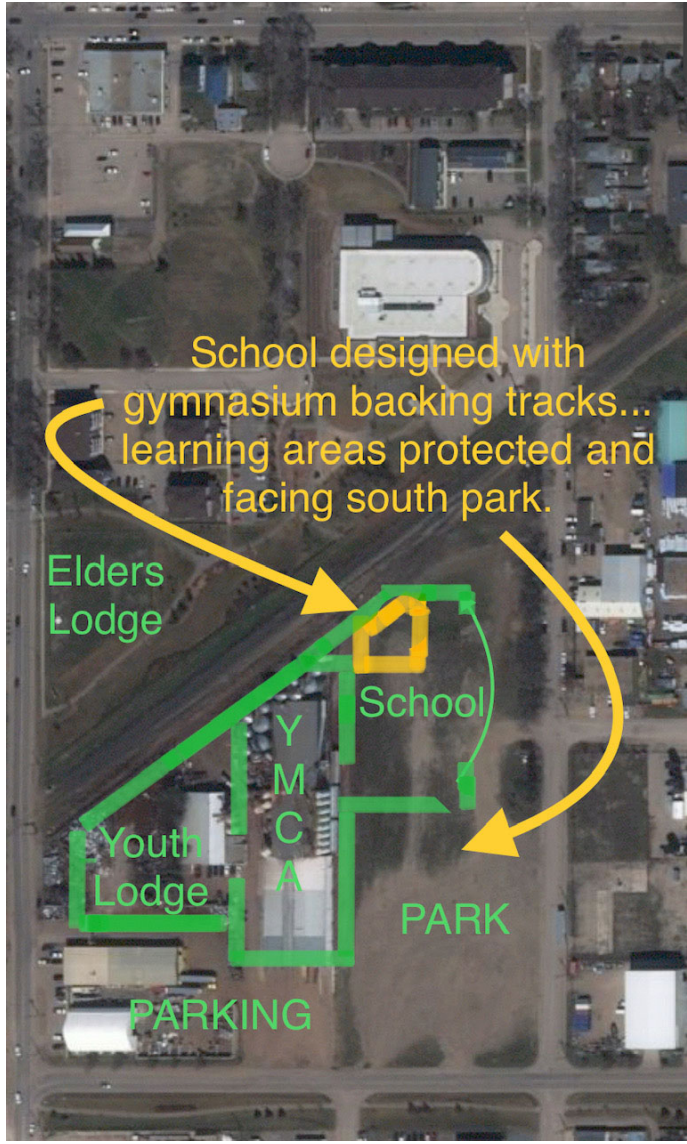
- Be in the **most central location** for the surrounding communities.
- **Improve transportation corridors** and build on the plans for the pedestrian corridor on 17th Street.
- **Begin the transition** that residents have been asking for since 1978
- Be a **Win Win Situation**.

The Vacant Parcel P Land...

- Parish and Heimbecker:
 - Plans to possibly incorporate it into the Riversdale Neighbourhood Plan.
- This land, next to St. Marys School is large enough for a new school, and substantial new green space.
- This site also allows for numerous future partnership land development.

Residents ask you to Reimagine Parcel

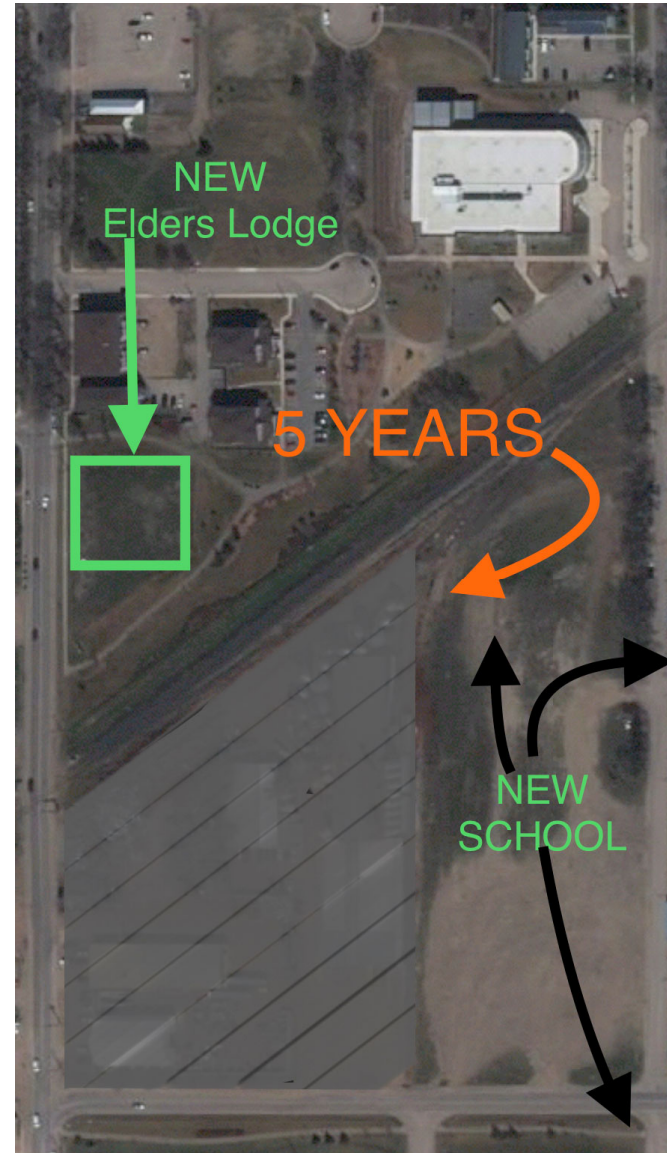
'P'



These Conversations Require Time!!!

- We understand the Provincial Government is eager to build this new school.
- We ask you to ask the government for adequate time to have the proper conversations about Brown Field Development before plowing ahead full steam on what is easiest and fastest.

Transition is Needed and Possible



Residents are thinking BIG picture...

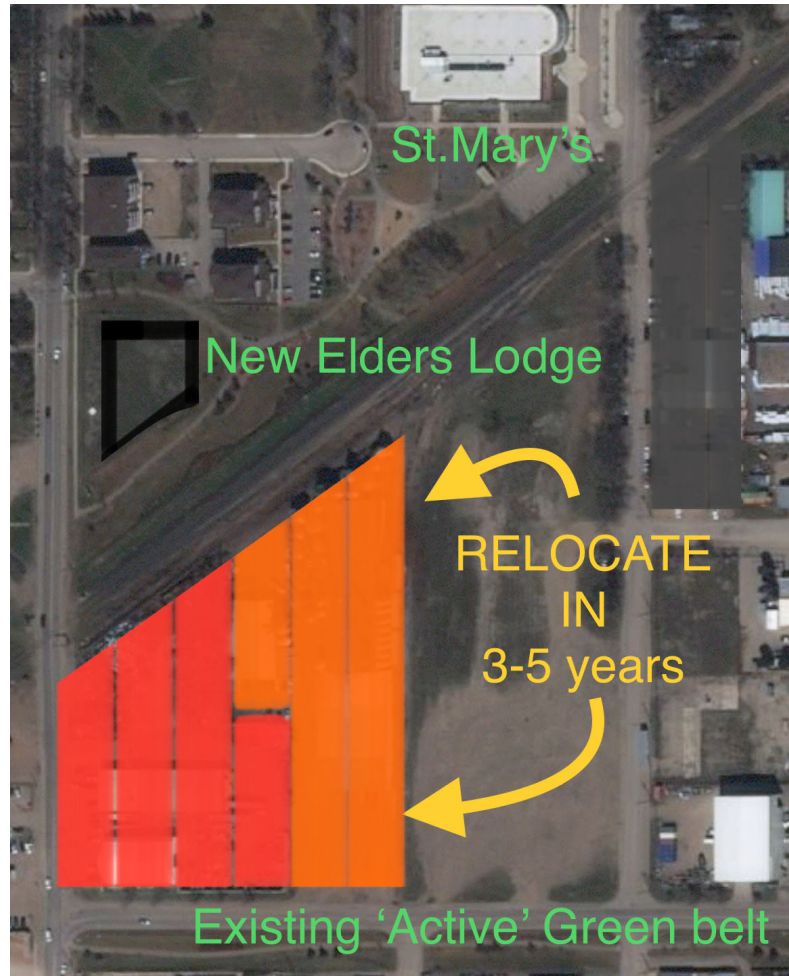
We need the City Administration, City Council and the Saskatoon Public School Board to be doing the same.

The time to begin this transition of brownfields like Parcel 'P' is now necessary... for the safety of children and the health of elders and the well being of everyone in between.

We ask the city to commit to work toward transition at this **critical point**.

- Ask the School Board to explore with the city the opportunity to transition undesirable brownfield land, instead of sacrificing the existing green spaces in our communities.

We don't want Hazards in the Heart of our New School Community



We want a New School in the Heart of
our New School Community!

