

Potential Phasing for City Yards and North Downtown

Appendix 3



Asset & Financial Management

Facilities & Fleet
306-975-3300

NOTE:
THESE DRAWINGS HAVE BEEN PREPARED BASED ON INFORMATION PROVIDED BY OTHERS. THE CITY HAS TAKEN STEPS TO VERIFY THE ACCURACY AND/OR COMPLETENESS OF THIS INFORMATION BUT SHALL NOT BE RESPONSIBLE FOR ANY ERRORS OR OMISSIONS THAT MAY BE INCORPORATED AS A RESULT OF ERRONEOUS INFORMATION PROVIDED BY OTHERS THAT WAS NOT ABLE TO BE VISUALLY CONFIRMED.

GENERAL NOTES:
1. ALL DIMENSIONS ARE IN MILLIMETRES
2. DRAWINGS ARE NOT TO BE SCALED.
3. ALL DRAWINGS TO BE READ IN CONJUNCTION WITH THE SPECIFICATIONS UNLESS OTHERWISE NOTED.
4. VERIFY SITE CONDITIONS, DIMENSIONS AND LOCATION OF ALL UTILITIES PRIOR TO THE START OF CONSTRUCTION.
5. REPORT ALL DISCREPANCIES TO THE CONSULTANT.

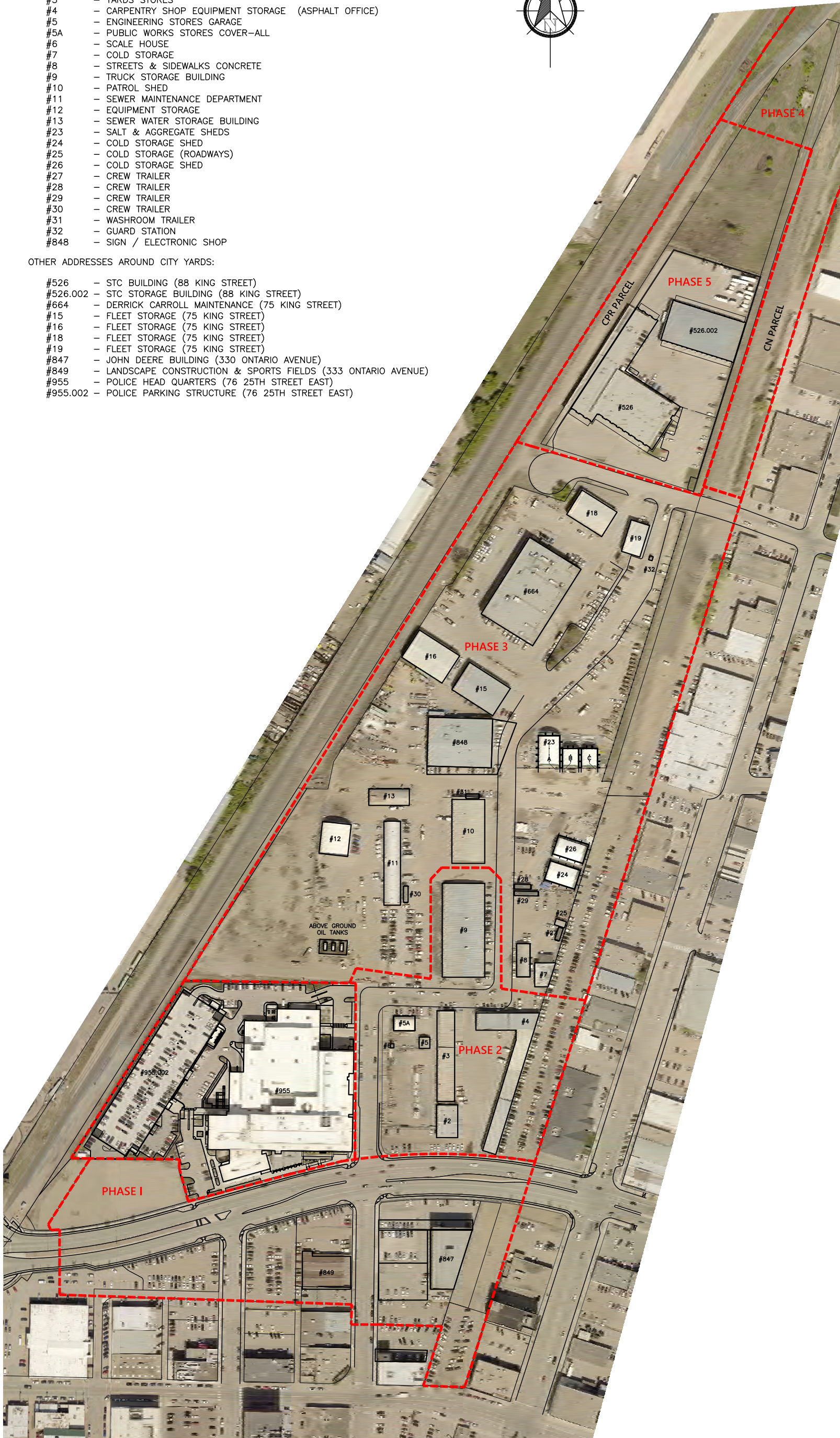


BUILDINGS UNDER 450 ONTARIO AVENUE ADDRESS:

- #2 - CENTRAL SERVICES HYDRANT SHOP STEAM & WASH BAY
- #3 - YARDS STORES
- #4 - CARPENTRY SHOP EQUIPMENT STORAGE (ASPHALT OFFICE)
- #5 - ENGINEERING STORES GARAGE
- #5A - PUBLIC WORKS STORES COVER-ALL
- #6 - SCALE HOUSE
- #7 - COLD STORAGE
- #8 - STREETS & SIDEWALKS CONCRETE
- #9 - TRUCK STORAGE BUILDING
- #10 - PATROL SHED
- #11 - SEWER MAINTENANCE DEPARTMENT
- #12 - EQUIPMENT STORAGE
- #13 - SEWER WATER STORAGE BUILDING
- #23 - SALT & AGGREGATE SHEDS
- #24 - COLD STORAGE SHED
- #25 - COLD STORAGE (ROADWAYS)
- #26 - COLD STORAGE SHED
- #27 - CREW TRAILER
- #28 - CREW TRAILER
- #29 - CREW TRAILER
- #30 - CREW TRAILER
- #31 - WASHROOM TRAILER
- #32 - GUARD STATION
- #848 - SIGN / ELECTRONIC SHOP

OTHER ADDRESSES AROUND CITY YARDS:

- #526 - STC BUILDING (88 KING STREET)
- #526.002 - STC STORAGE BUILDING (88 KING STREET)
- #664 - DERRICK CARROLL MAINTENANCE (75 KING STREET)
- #15 - FLEET STORAGE (75 KING STREET)
- #16 - FLEET STORAGE (75 KING STREET)
- #18 - FLEET STORAGE (75 KING STREET)
- #19 - FLEET STORAGE (75 KING STREET)
- #847 - JOHN DEERE BUILDING (330 ONTARIO AVENUE)
- #849 - LANDSCAPE CONSTRUCTION & SPORTS FIELDS (333 ONTARIO AVENUE)
- #955 - POLICE HEAD QUARTERS (76 25TH STREET EAST)
- #955.002 - POLICE PARKING STRUCTURE (76 25TH STREET EAST)



PRELIMINARY ONLY

APPROVED
 AS DRAWN AS NOTED
SIGN DATE

REV ISSUED FOR DATE

| | | | |
|--------------|------------|-------------|---------------|
| DESIGNED BY: | DRAWN BY: | CHECKED BY: | REQUESTED BY: |
| | RO | JP | JP |
| SCALE: | DATE: | | |
| NOT TO SCALE | 01/08/2019 | | |

SHEET NAME
PHASING PLAN

PROJECT TITLE
634
CITY YARDS

| | |
|-------------|------------------------|
| PROJECT NO. | SHEET 1 REV. NO. |
|-------------|------------------------|