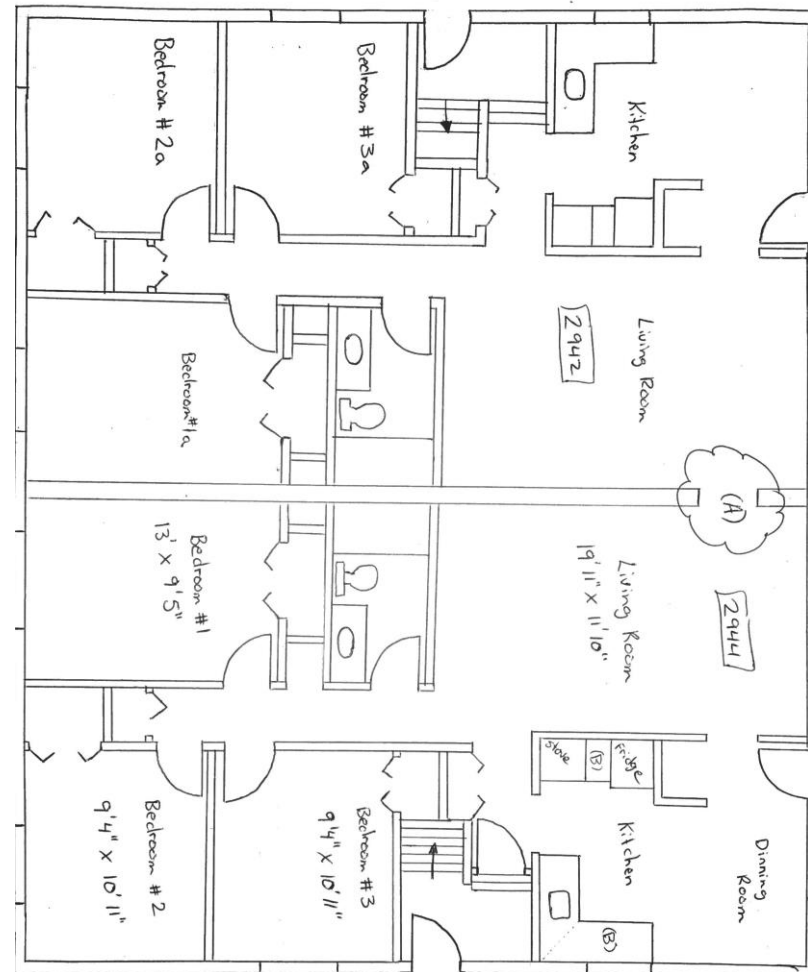
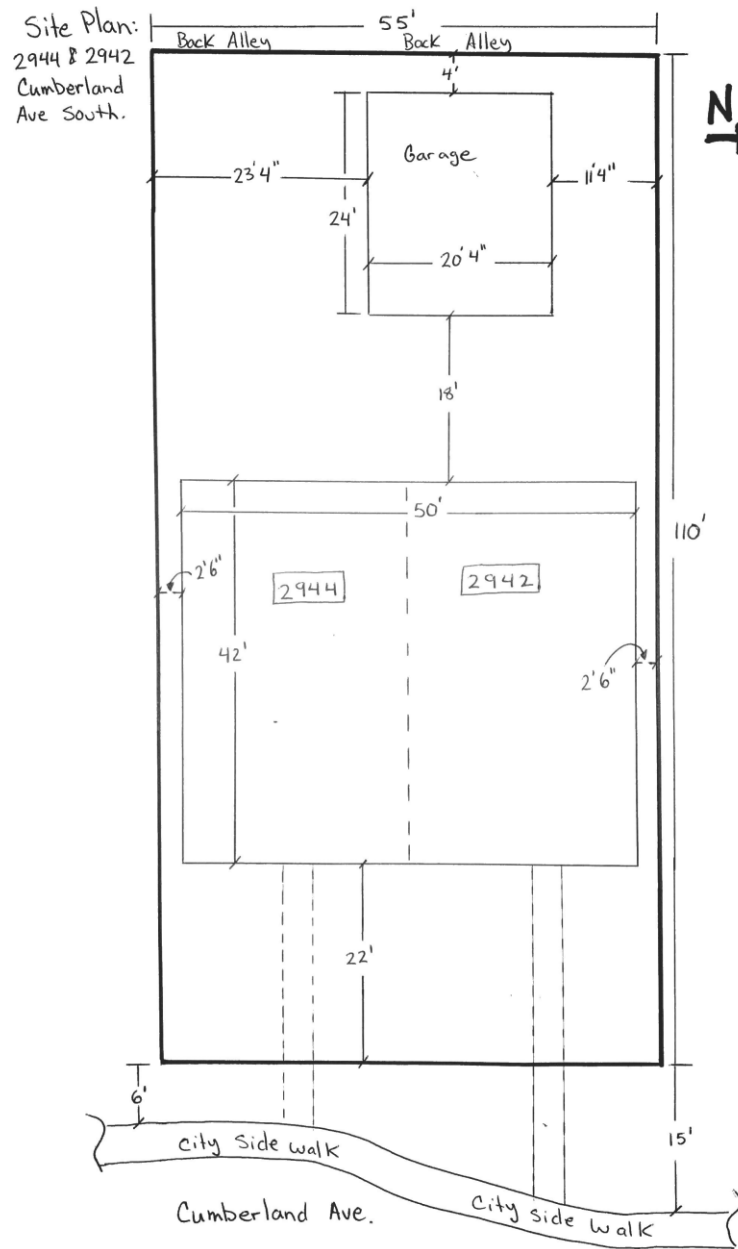
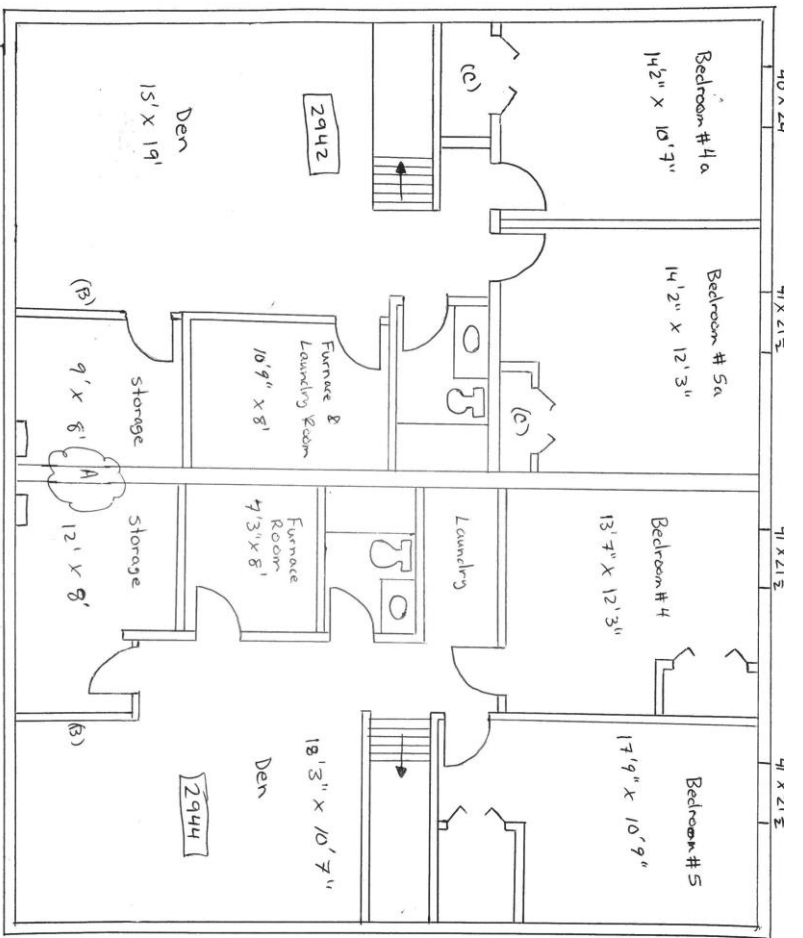


The Lighthouse Supported Living - Site and Floor Plan

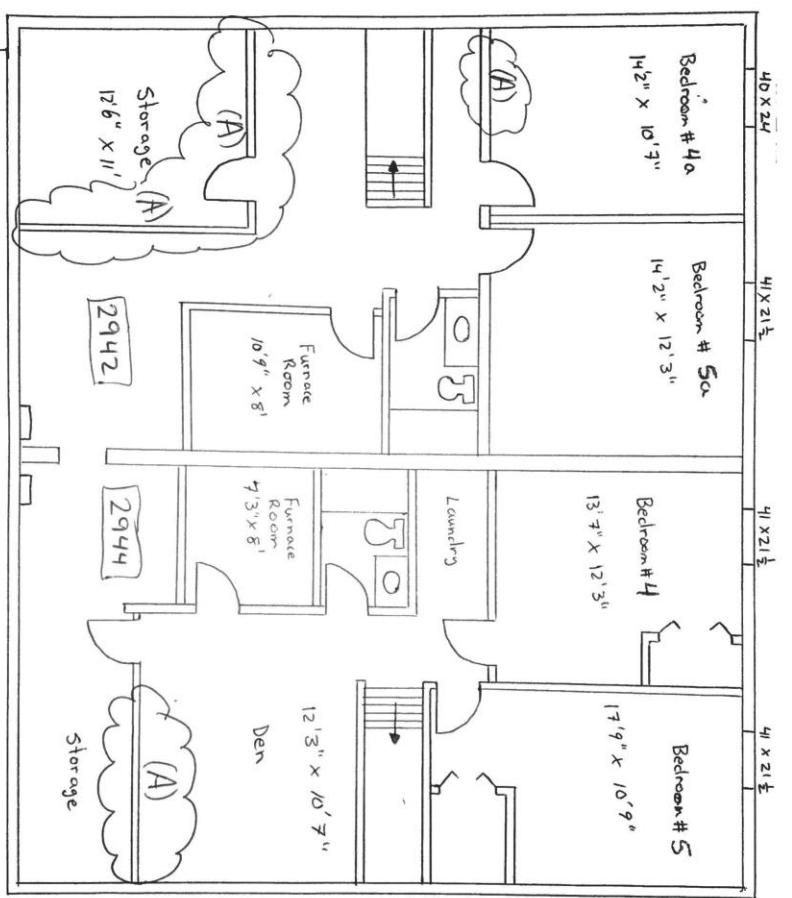


Construction Main Floor:
(A) Frame in opening to separate with 2 hour fire separation. Double 15.9mm both sides.
(B) Install kitchen cabinets.



- Construction Plan for basement:
- Build in wall to separate units. 2hr fire rating.
 - Frame new walls for storage rooms
 - Frame in closets for bedrooms.

Demolition Plan for Basement



(A) Remove walls