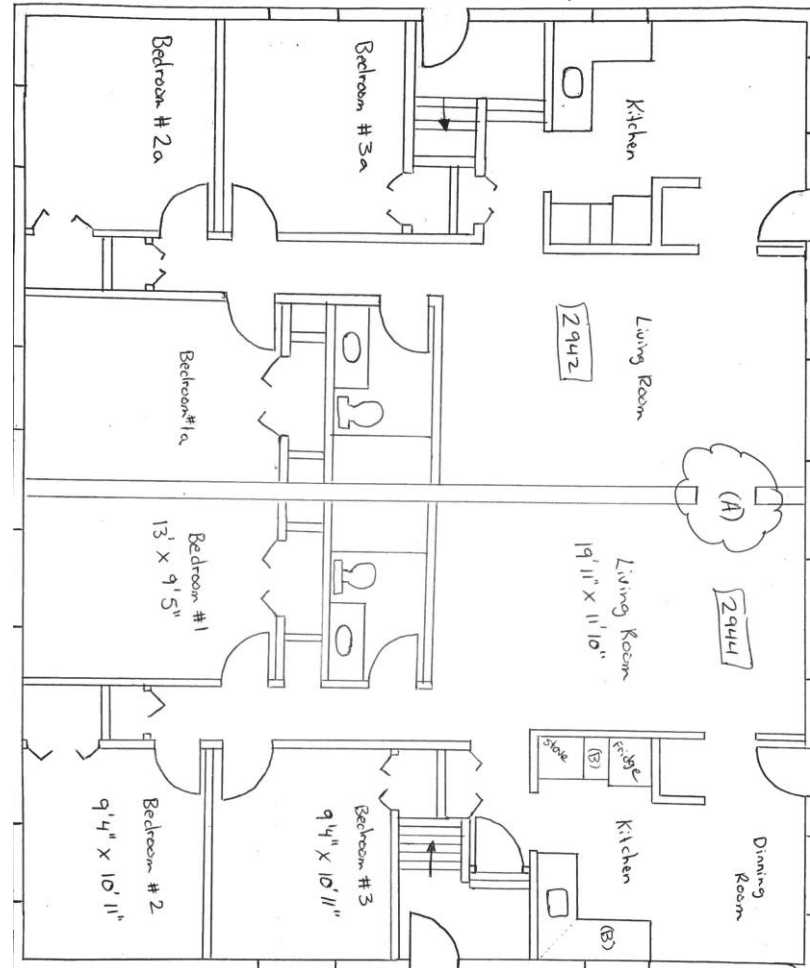
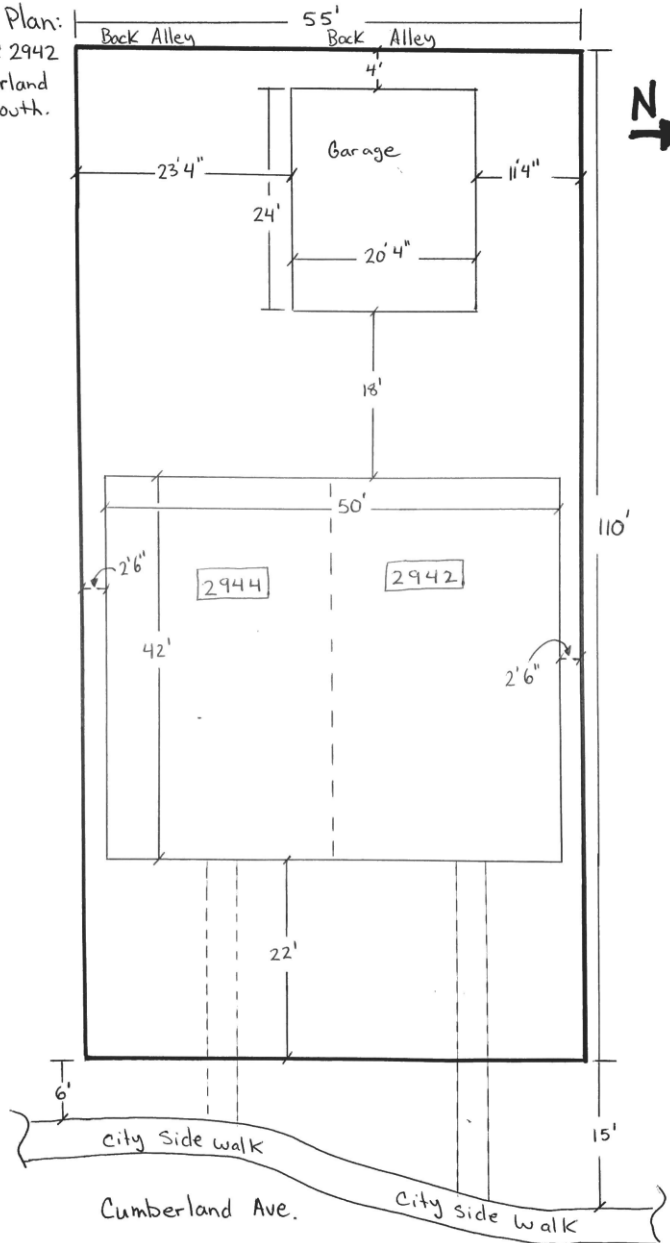


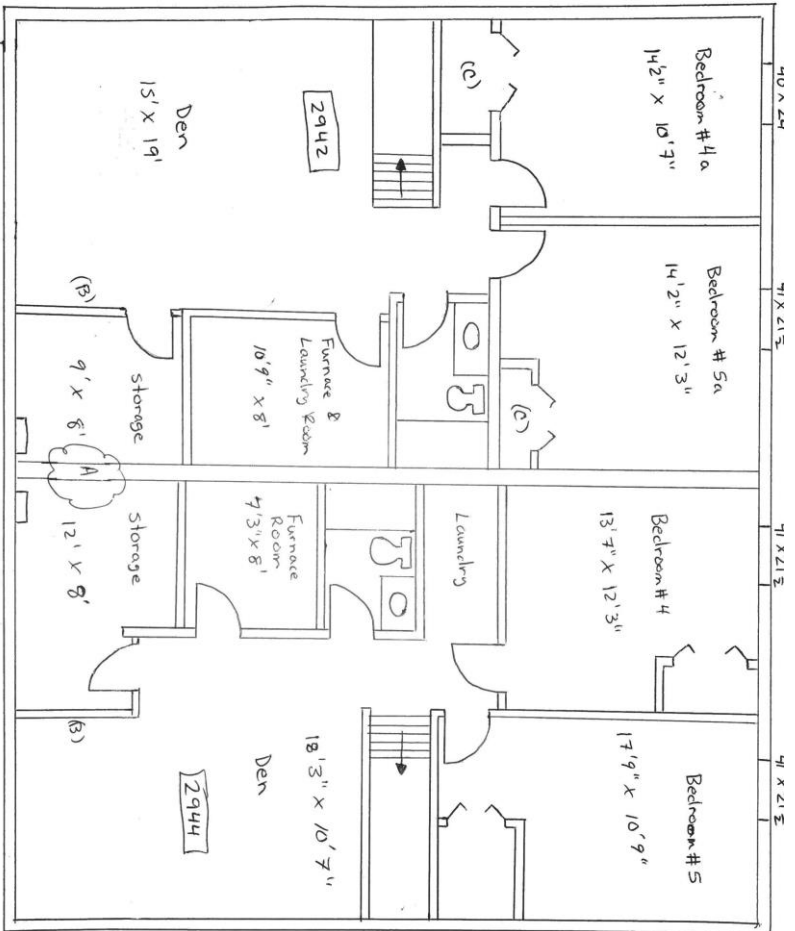
The Lighthouse Supported Living - Site and Floor Plan

Site Plan:
2944 & 2942
Cumberland
Ave South.



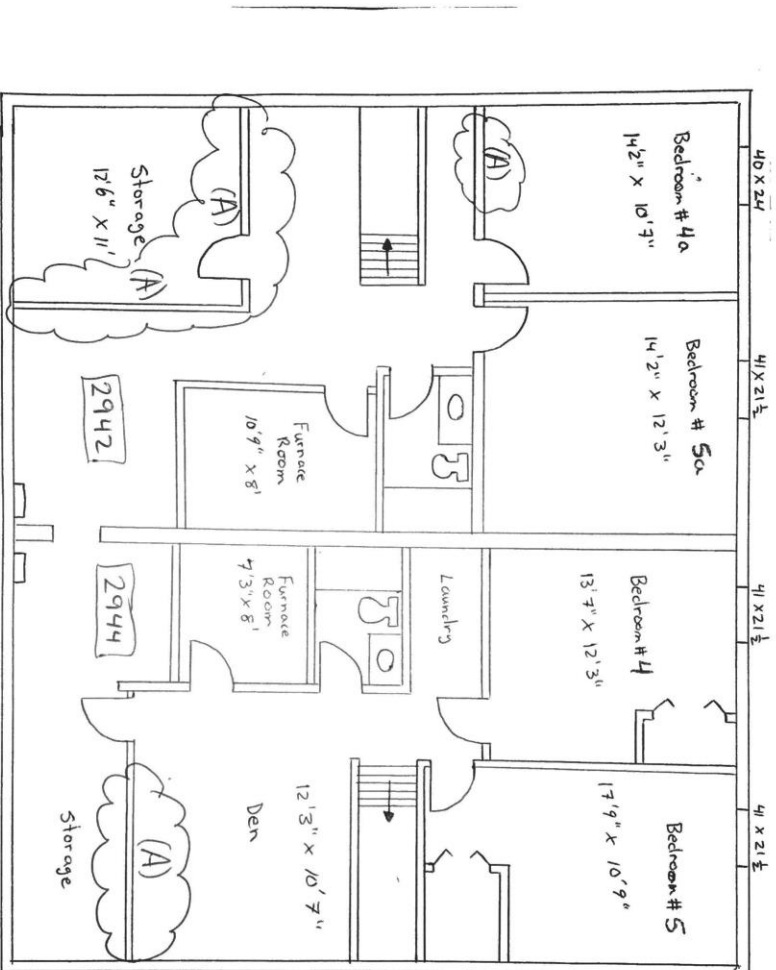
1/4" = 1'

Construction Main Floor:
(A) Frame in opening to separate with 2 hour fire separation. Double 15.9mm both sides.
(B) Install kitchen cabinets.



- Con structure Plan.
for basement:
- A) Build in wall to separate units. 2hr fire rating.
 - B) Frame New walls for storage rooms
 - C) Frame in closets for bedrooms.

Demolition Plan for Basement



(A) Remove walls