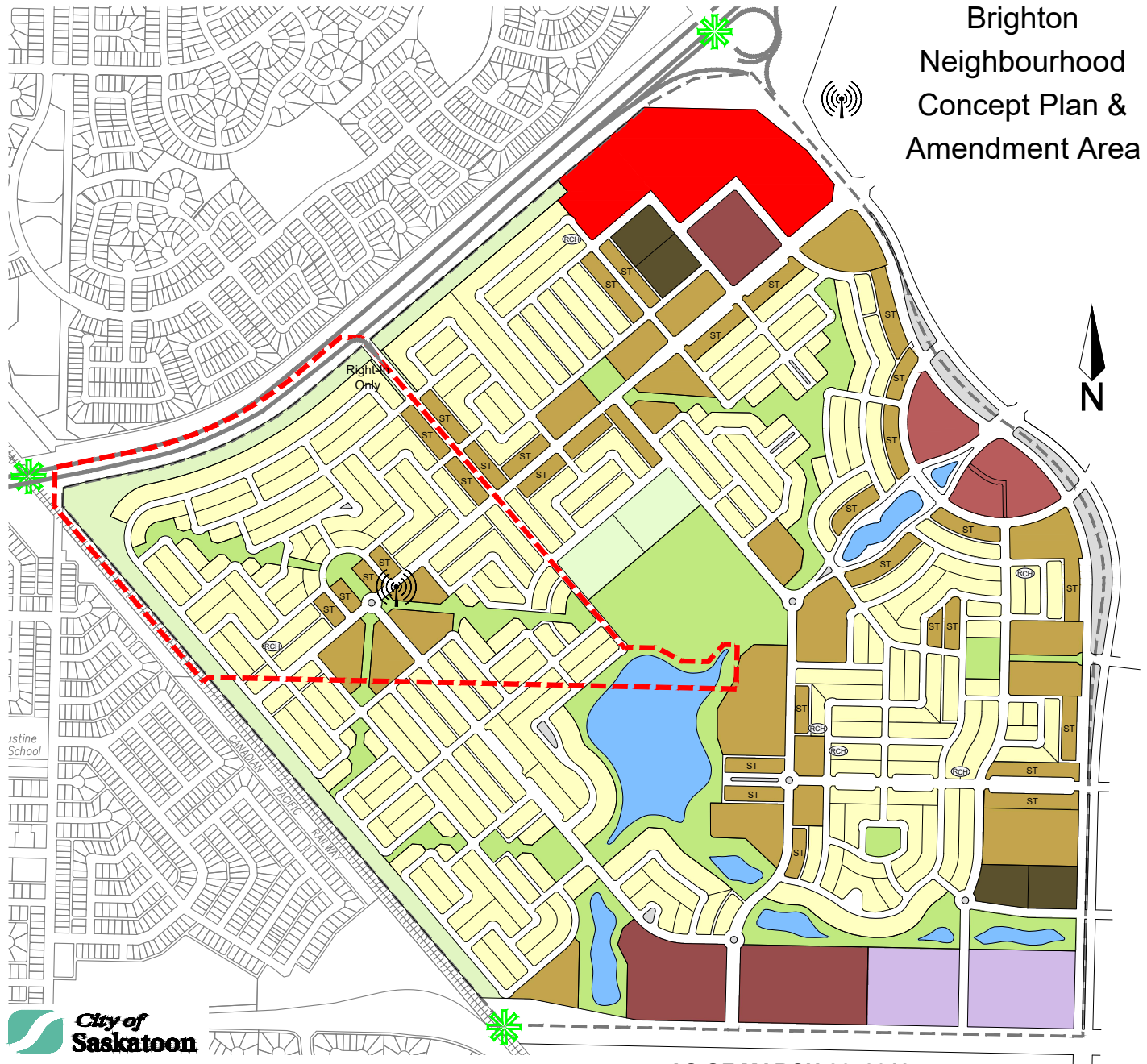


Brighton Neighbourhood Concept Plan

Brighton Neighbourhood Concept Plan & Amendment Area



N:\Planning\MAPPING\Concept Plans\Brighton\concept_plan_080_APPROVED.dwg **AS OF MARCH 26, 2018**

- | | |
|---|---------------------------------|
| SINGLE UNIT/SEMI UNIT DETACHED DWELLINGS | MUNICIPAL RESERVE |
| LOW DENSITY STREET TOWNHOUSING MULTI-UNIT DWELLINGS | BUFFER STRIP |
| LOW DENSITY GROUP TOWNHOUSING MULTI-UNIT DWELLINGS | PEDESTRIAN LINKAGE |
| MEDIUM DENSITY MULTI UNIT DWELLINGS | POSSIBLE ACCESS (UNDER REVIEW) |
| MIXED USE 1 - RESIDENTIAL/RETAIL/INSTITUTIONAL | RESIDENTIAL CARE HOME |
| MIXED USE 2 - OFFICE/RETAIL | APPROXIMATE CELL TOWER LOCATION |
| RETAIL | CONCEPT PLAN BOUNDARY |
| POTENTIAL SCHOOL SITE | Zoning Bylaw Amendment Area |
| WETLAND COMPLEX (WATER LEVEL VARIES) | |