



August 2019

## Avenue F South (20<sup>th</sup> Street to 21<sup>st</sup> Street) Directional Closure Feedback

In 2018, the City of Saskatoon worked with the Riversdale community to complete a Neighbourhood Traffic Review.

Residents of the 200 block of Avenue F South have expressed concerns that Avenue F between 20<sup>th</sup> Street and 21<sup>st</sup> Street is not wide enough to accommodate two-way traffic, especially with vehicles parked on both sides of the street and the amount of traffic generated by the Giant Tiger and Tim Hortons development site.

The residents were concerned that the Neighbourhood Traffic Review recommendation for permanent curb extensions and a four-way stop at the intersection of 21<sup>st</sup> Street and Avenue F would not resolve their concerns regarding two-way traffic on Avenue F South between 20<sup>th</sup> Street and 21<sup>st</sup> Street.

The Administration would like to gauge the residents' interest in pursuing a southbound directional closure at the intersection of Avenue F & 21<sup>st</sup> Street in addition to the 4-way stop, as shown in the attached figures. The directional closure would replace the Neighbourhood Traffic Review recommendation for permanent curb extensions.

The directional closure would be designed to restrict the following turning movements:

- Avenue F southbound straight through
- 21<sup>st</sup> Street eastbound right turn
- 21<sup>st</sup> Street westbound left turn

### Have your Say (one response per household please)

Name (Please Print): \_\_\_\_\_

Address: \_\_\_\_\_

Do you support a directional closure at the intersection of Avenue F & 21<sup>st</sup> Street?

☐ Yes

☐ No

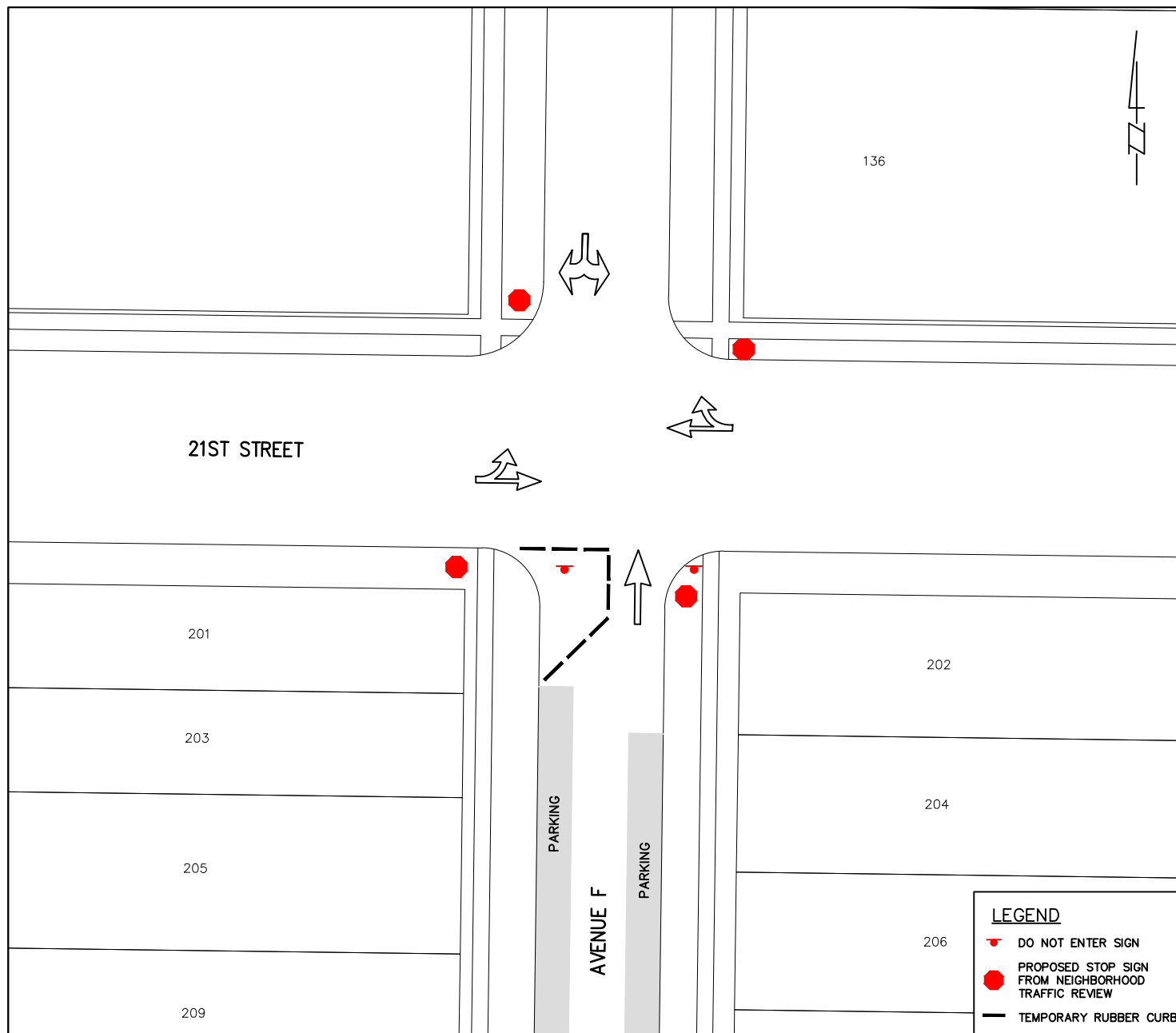
Please return your feedback form by **Friday, August 30, 2019** to [transportationsurvey@saskatoon.ca](mailto:transportationsurvey@saskatoon.ca) (suggest taking a picture and emailing).

or mail to:

Transportation Customer Service  
222 – 3<sup>rd</sup> Avenue North  
Saskatoon, SK S7K 0J5



Figure 1: Plan view of a directional closure



**Figure 2: Street view of a temporary directional closure (facing south)**



**Figure 3: Street view of a permanent directional closure (facing north)**



